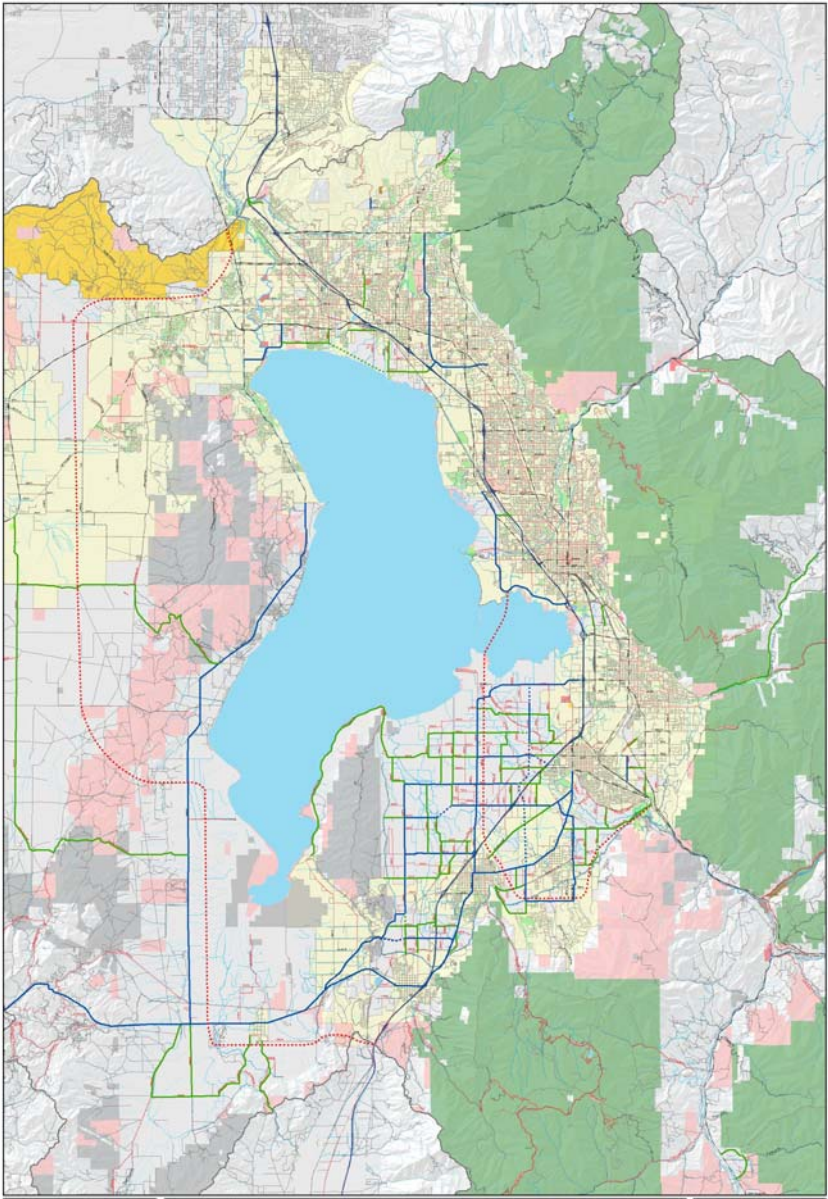


General Plan, Land Use Element Map

The Utah County General Plan, *Land Use Element Map*, illustrates the five areas of the Utah County General Plan, *Land Use Element Plan*. This land use plan and land use map, along with the goals, objectives and policies element; the moderate income housing element; the transportation and traffic circulation element; and the environmental element; make up the advisory guidelines for the comprehensive development and long-range land use planning for the unincorporated lands of Utah County, Utah.



Transportation and Traffic Circulation Element Map

Utah County General Plan

Arterial and Collector Roads

- Arterial
- Arterial Proposed
- Collector
- Collector Proposed
- Long Range Expressway Proposed

Scale: 1 inch = 1 mile

North Arrow

Utah County

Land Use Element Map

Utah County General Plan



1:197,871
1 inch = 3.12 miles

County Boundary

Township Lines

Stream or River

Roads

I-15

Highway or State Road

Paved Roads

Dirt Roads

Gravel Roads

County Land Use

Agricultural/Watershed

Commercial

Incorporated

Manufacturing

Residential

Utah Lake

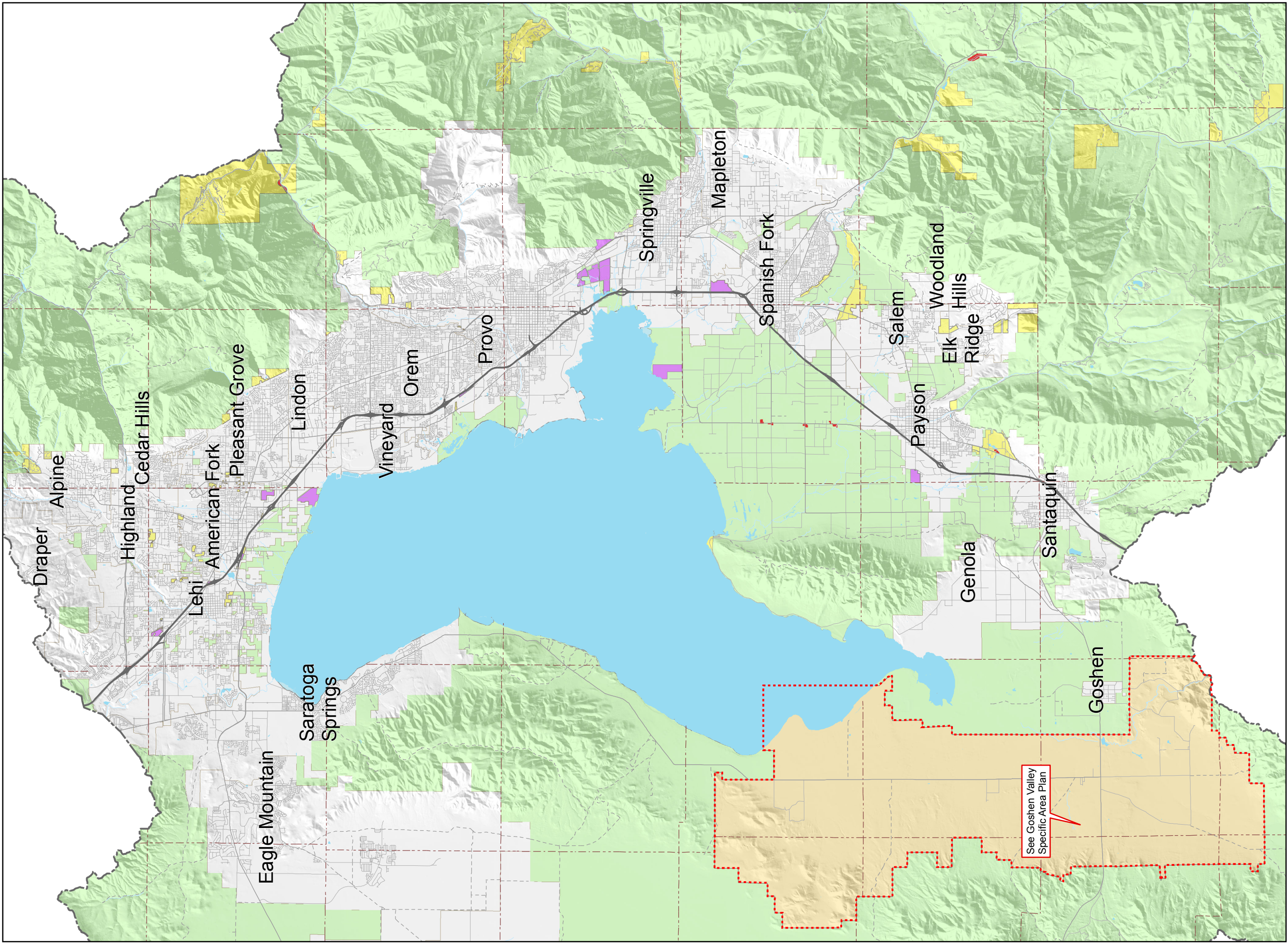
Goshen Valley Area Plan



Utah County Information Systems GIS Division
2855 South State Street
Provo, UT 84606
(801) 851-8626

Copyright 2017 by Utah County Government
All rights reserved. Portions may be copied for incidental use, but may not be resold. Utah County makes no warranty with respect to the accuracy, completeness or usefulness of this map. Utah County assumes no liability for direct, indirect, special, or consequential damages resulting from the use or misuse of this map or any of the information contained hereon.

Date: 7/20/2017 Printed by: curtisw
Doc: LandUse_GeneralPlan_11x17inset



Land Use Element Map

Utah County General Plan



1:356,944
1 inch = 5.63 miles

- County Boundary
- Township Lines
- Stream or River
- Roads**
 - I-15
 - Highway or State Road
- County Land Use**
 - Agricultural/Watershed
 - Commercial
 - Incorporated
 - Manufacturing
 - Residential
 - Utah Lake
 - Goshen Valley Area Plan



Utah County Information Systems GIS Division
2855 South State Street
Provo, UT 84606
(801) 851-8626

Copyright 2017 by Utah County Government
All rights reserved. Portions may be copied for incidental use, but may not be resold.
Utah County makes no warranty with respect to the accuracy, completeness or usefulness of this map. Utah County assumes no liability for direct, indirect, special, or consequential damages resulting from the use or misuse of this map or any of the information contained hereon.
Date: 7/20/2017 Printed by: curtisw
Doc: LandUse_GeneralPlan_11x17

T3S
T4S
T5S
T6S
T7S
T8S
T9S
T10S
T11S
T12S

R3W R2W R1W R1E R2E R3E R4E R5E R6E R7E R8E R9E

See Goshen Valley
Specific Area Plan