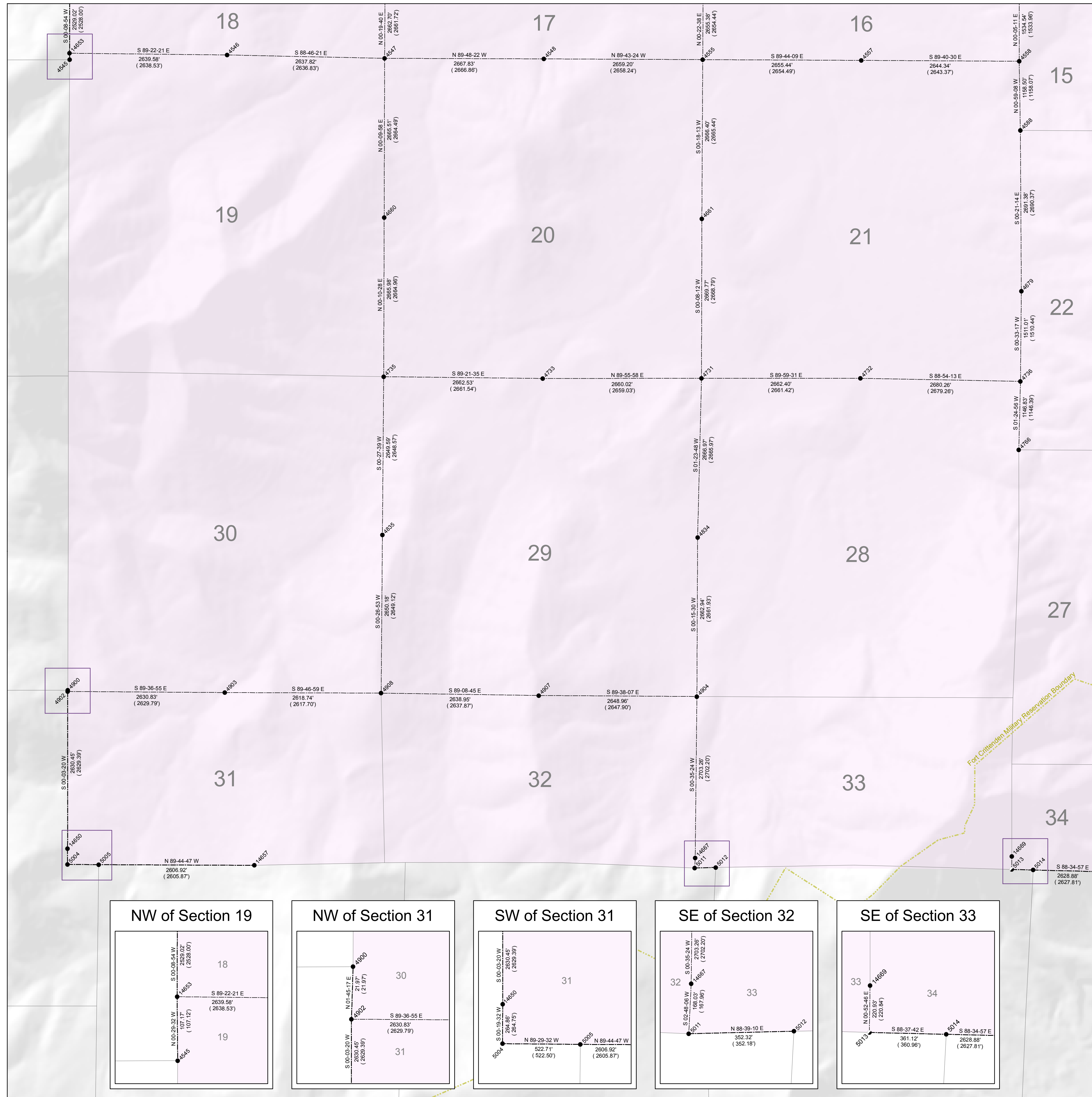


SW of T 9 S, R 2 W

GIS Monument Number	NAD 83		NAD 83		NAD 27		NAD 27	
	Northings US Survey Feet	Eastings US Survey Feet	Northings Meters	Eastings Meters	Northings	Eastings	Northings	Eastings
4545	7179466.28	1466877.15	2188305.698	44705.050	4001.4023020	-112.0711.06138	61780321	1826673.99
4546	7179544.51	1469514.60	2188329.542	447908.945	4001.4118256	-112.0637.16173	61788112	1829311.84
4547	7179488.02	1472150.82	2188312.325	448712.466	4001.4080072	-112.0603.26597	61782523	1831948.09
4548	7179478.99	1474817.66	2188309.573	449525.321	4001.4088716	-112.0528.98065	61781593	1834614.86
4555	7179466.15	1477475.87	2188305.658	450335.547	4001.4093252	-112.0454.80588	61780310	1837273.33
4557	7179453.91	1480130.33	2188301.928	451144.628	4001.4098086	-112.0420.67944	61779072	1839928.35
4558	7179438.92	1482773.66	2188297.360	451950.314	4001.4098955	-112.0346.65996	61777608	1842571.33
4588	7178281.02	1482793.58	2187944.430	451956.386	4001.2955617	-112.0346.34618	61661795	1842591.37
4660	7176823.54	1472143.10	2187500.190	448710.113	4001.1446709	-112.0603.13509	61516061	1831940.37
4661	7176800.75	1477461.75	2187493.244	450331.242	4001.1458942	-112.0454.76454	61513752	1837259.35
4679	7175590.70	1482810.20	2187124.420	451961.452	4001.0296865	-112.0345.91491	61392768	1842607.95
4731	7174131.97	1477455.39	2186679.797	450329.304	4000.4821327	-112.0454.62310	61246877	1837252.96
4732	7174131.59	1480116.81	2186679.682	451140.506	4000.4837925	-112.0420.41546	61246856	1839914.49
4733	7174128.85	1474796.36	2186678.847	449518.829	4000.4801012	-112.0528.79974	61246567	1834593.84
4735	7174158.59	1472134.99	2186687.911	448707.643	4000.4812873	-112.0603.00914	61249532	1831932.28
4736	7174080.33	1482795.59	2186640.588	451956.996	4000.4804964	-112.0345.98067	61241734	1842593.42
4764	7172934.29	1482767.26	2186314.745	451948.366	4000.3671250	-112.0346.25190	61127151	1842621.87
4834	7171466.79	1477390.40	2185867.448	450309.496	4000.2186891	-112.0455.23548	60980189	1837188.46
4835	7171510.11	1472113.69	2185880.652	448701.151	4000.2195221	-112.0603.05422	60984732	1831911.51
4900	7168910.60	1466846.23	2185088.320	447095.626	3959.5590592	-112.0710.51882	60724839	1826644.03
4902	7168888.64	1466845.56	2185081.629	447095.420	3959.5568892	-112.0710.52555	60722644	1826644.35
4903	7168870.98	1469475.29	2185076.245	447896.964	3959.5569302	-112.0636.73093	60720863	1829273.86
4904	7168804.89	1477378.40	2185056.102	450305.836	3959.5556044	-112.0455.16720	60714229	1837176.94
4907	7168821.75	1474730.55	2185061.241	449498.771	3959.5555541	-112.0529.19451	60715920	1834529.00
4908	7168861.07	1472092.97	2185073.225	448694.836	3959.5570255	-112.0603.09179	60719638	1831891.33
5004	7165994.51	1466841.51	2184199.496	447094.186	3959.5708573	-112.0710.31997	60432426	1826640.55
5005	7165989.88	1467363.99	2184198.083	447253.440	3959.5707563	-112.0703.60420	60432785	1827163.08
5011	7165935.07	1477342.36	2184181.378	450294.851	3959.5719536	-112.0455.39034	60427278	1837141.42
5012	7165943.35	1477694.44	2184183.902	450402.167	3959.5729982	-112.0450.86710	60428105	1837493.50
5013	7165908.97	1482647.71	2184173.422	451911.925	3959.5727305	-112.0347.22004	60424653	1842446.75
5014	7165900.33	1483008.57	2184170.789	452021.916	3959.5721011	-112.0342.58264	60423788	1842807.62
14650	7166259.26	1466843.01	2184280.190	447094.645	3959.5970232	-112.0710.32419	60459719	1826642.03
14653	7179573.40	1466876.23	2188338.948	447104.770	4001.4128879	-112.0710.08273	61791034	1826673.05
14657	7165978.35	1469949.83	2184194.569	448004.700	3959.5711820	-112.0630.12107	60411625	1829768.91
14667	7166102.83	1477350.57	2184232.511	450297.353	3959.5883387	-112.0455.29890	60440452	1837149.60
14669	7166129.79	1482651.10	2184240.727	451912.960	3959.5945562	-112.0347.19427	60446734	1842450.15

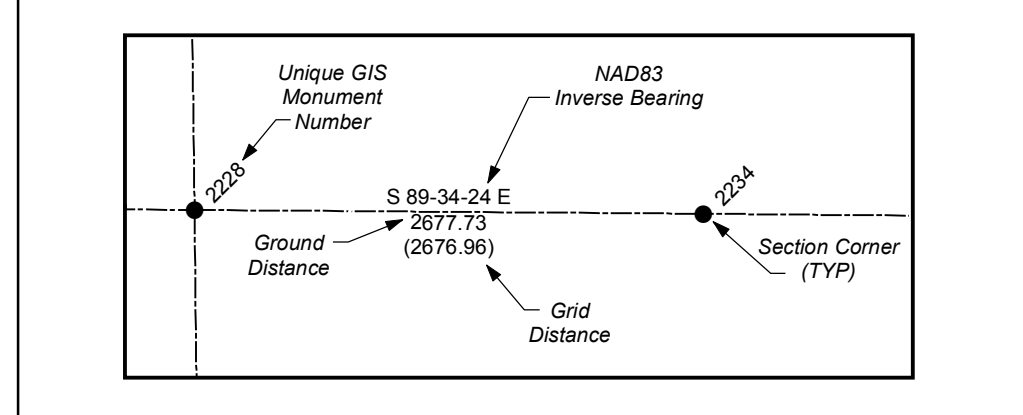


State Plane Coordinate & Dependent Resurvey

SW 1/4 of Township 9 South, Range 2 West Salt Lake Base & Meridian

LEGEND

- <all other values>
- Section Corner
- 1/4 Corner
- 1/16 Corner
- 1/64 or 1/256 Corner
- Closing Corner
- ◆ Meander Corner
- ▲ Reference Corner
- Witness Corner
- ⊙ Amended Monument
- ⊙ Angle Point
- ⊙ Bench Mark
- ⊙ HARN
- ⊙ Triangulation Station
- Camp Williams Military Boundary
- County Boundary Monument
- Fort Crittenden Military Reservation
- Spanish Fork Indian Reservation
- US Forest Service Boundary
- Camp Williams Military Boundary
- Fort Crittenden Military Reservation
- US Forest Service Boundary
- Indian Reservation Boundary
- Township or Range Line
- Section Line
- Quarter Section Line
- Quarter/Quarter Section Line
- Unsurveyed NAD83
- Utah County Boundaries
- Utah Lake Meander Line



ALL BEARINGS AND DISTANCES SHOWN ARE BASED ON THE UTAH COORDINATE SYSTEM, 1983 CENTRAL ZONE.

THE MONUMENT NUMBERS LISTED ARE A UNIQUE G.I.S. NUMBER ASSIGNED TO EACH SURVEYED MONUMENT.

THE NAD83 NORTHINGS & EASTINGS LISTED WERE TRANSFERRED FROM N.G.S. HARN CONTROL STATIONS.

THE LATITUDES & LONGITUDES LISTED WERE CALCULATED FROM THE NAD83 NORTHINGS & EASTINGS THAT WERE TRANSFERRED FROM N.G.S. HARN CONTROL STATIONS.

THE NAD27 NORTHINGS & EASTINGS LISTED WERE TRANSFERRED FROM UNITED STATES COAST AND GEODETIC SURVEY STATIONS, WILLIAMS, ELBERTA, AND LAKE MOUNTAIN No. 2.

SECTION TIES, ORIGINAL GENERAL LAND OFFICE OR BUREAU OF LAND MANAGEMENT SURVEY NOTES, TRAVERSES CALCULATIONS, TIES TO TRAVERSE POINTS, GPS DATA, ETC. USED IN OBTAINING THIS INFORMATION ARE AVAILABLE IN THE UTAH COUNTY SURVEYOR'S OFFICE.

ALL SECTION CORNERS WERE ESTABLISHED AND VERIFIED PRIOR TO RESURVEY WORK ACCORDING TO THE RULES ESTABLISHED BY THE BUREAU OF LAND MANAGEMENT.

U.S. FOREST SERVICE BOUNDARY AS PER "STATUS AND ENCUMBRANCE MAPS" FURNISHED TO THE UTAH COUNTY SURVEY OFFICE IN THE YEAR 2000.

THE DATA SHOWN ON THIS PLAT WAS COMPILED FROM SURVEY DATA ACQUIRED USING HARN CONTROL POINTS PUBLISHED IN NAD83 STATE PLANE COORDINATES. THE GROUND DISTANCES SHOWN BETWEEN POINTS WERE CALCULATED BY APPLYING "COMBINED CONVERSION FACTORS" (COMMONLY CALLED GRID FACTORS) TO THE INVERSED DISTANCES BETWEEN THE STATE PLANE COORDINATES OF RESPECTIVE MONUMENT POINTS. BECAUSE GRID FACTORS ARE POTENTIALLY UNIQUE AT EACH POINT ON THE SURFACE OF THE EARTH, BASED ON LATITUDE AND ELEVATION, THE RESULTING ADJUSTMENTS FROM GRID TO GROUND WILL VARY FROM POINT TO POINT AROUND ANY GIVEN SECTION. THUS, A "PERFECT CLOSURE" AROUND A SECTION CAN NOT BE OBTAINED USING THE PUBLISHED GROUND DISTANCES.

UTAH COUNTY ASSUMES NO LIABILITY FOR DIRECT, INDIRECT, SPECIAL, OR CONSEQUENTIAL DAMAGES RESULTING FROM THE USE OR MISUSE OF THIS PLAT OR ANY INFORMATION CONTAINED HEREON.

