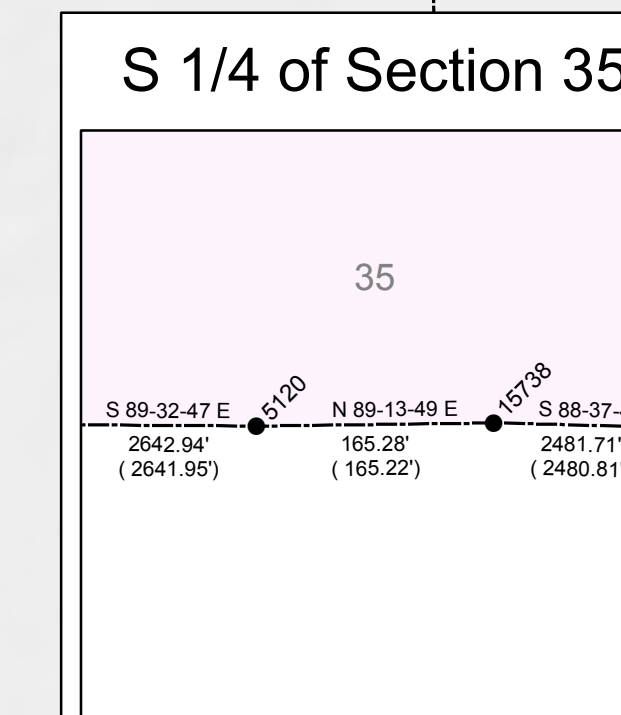
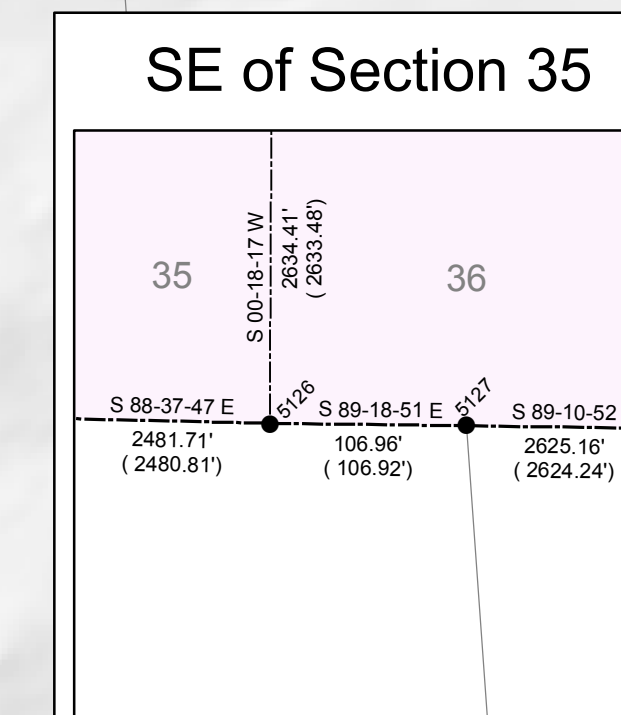
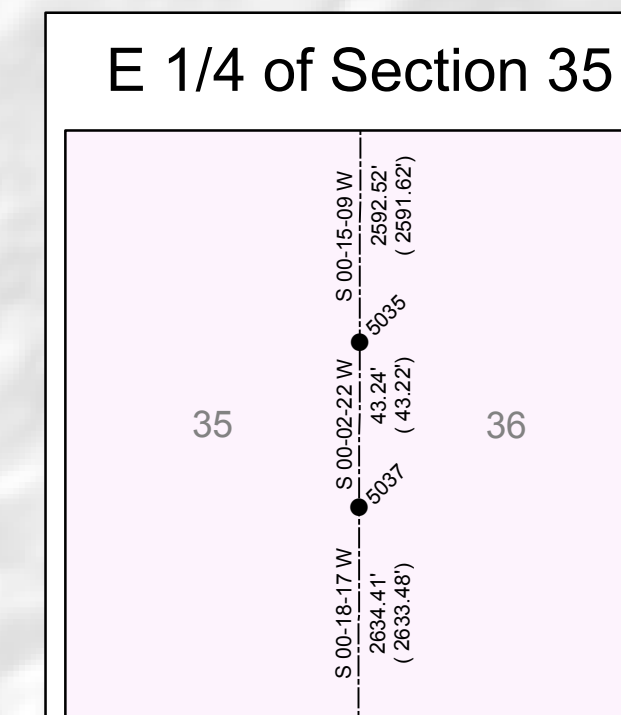
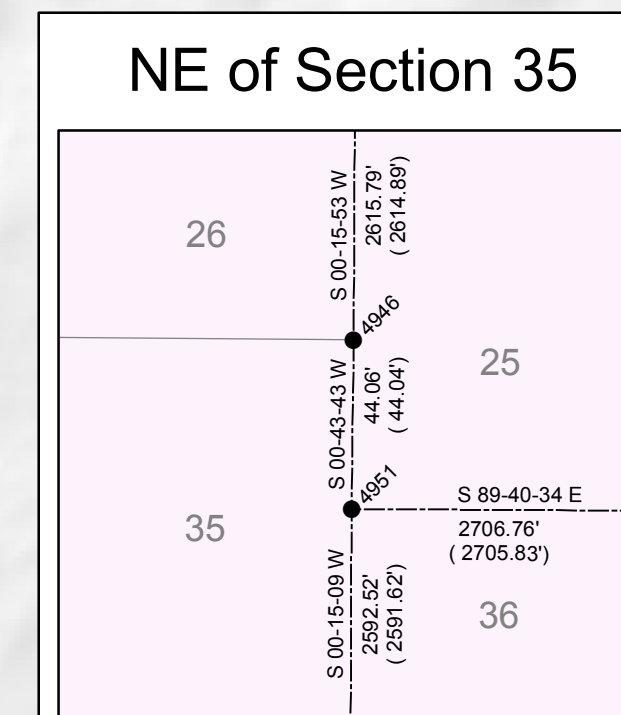
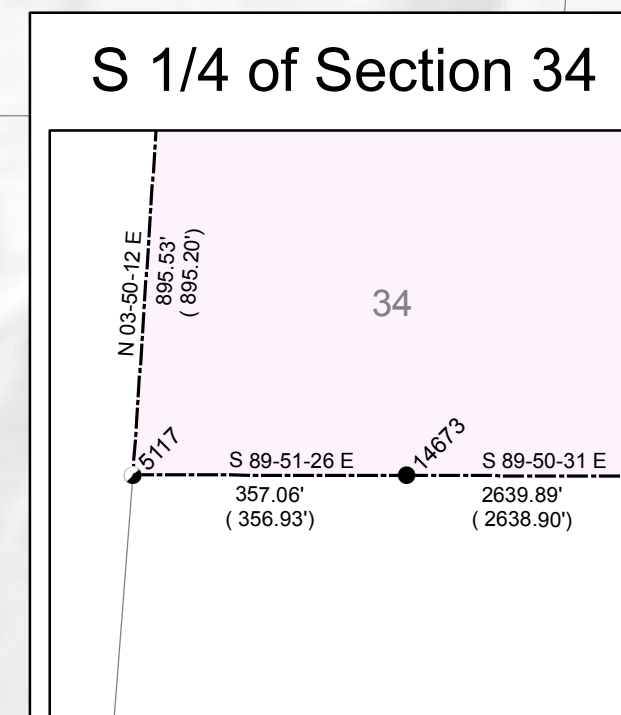
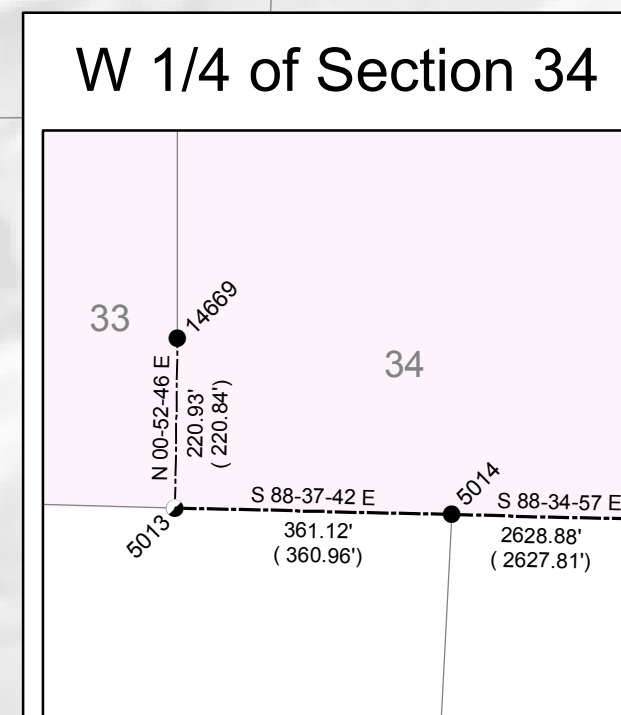
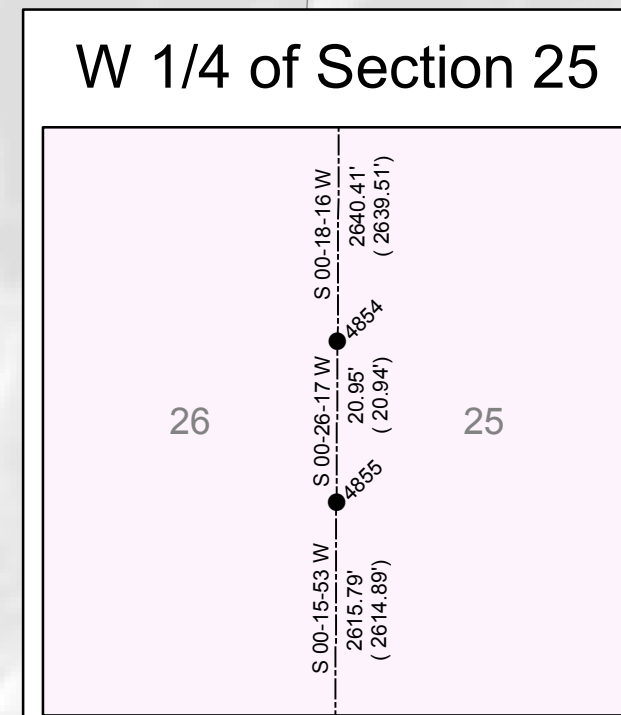
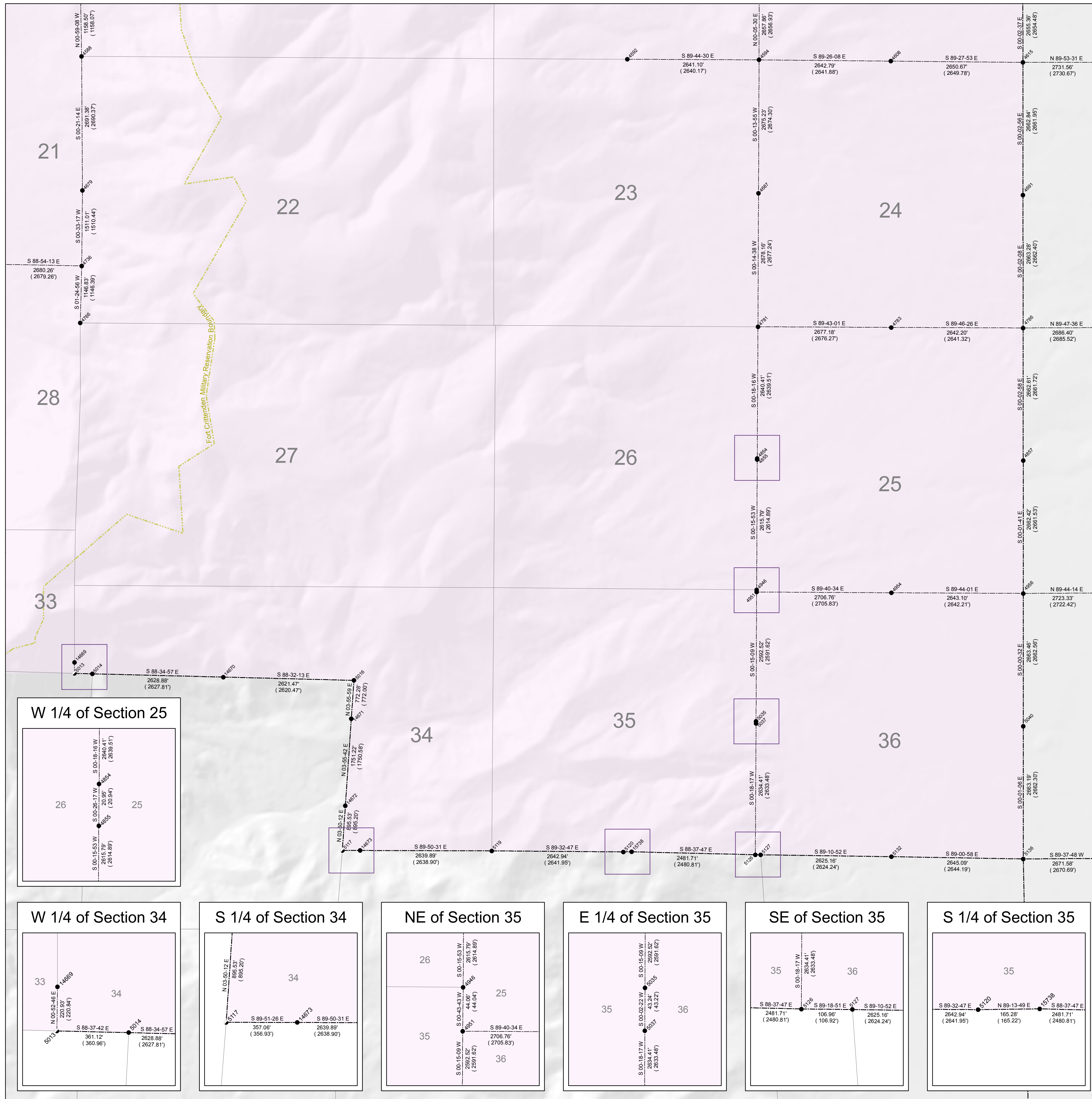


SE of T 9 S, R 2 W

GIS Monument Number	NAD 83 Northings US Survey Feet	NAD 83 Eastings US Survey Feet	NAD 83 Northings NAD83	NAD 83 Eastings NAD83	NAD 83 Longitudes NAD83	NAD 27 Northings	NAD 27 Eastings
4558	7178291.02	1482733.58	2187944.430	451956.386	-112.034634618	616417.95	1845291.37
4592	7178223.34	1493739.76	2187926.850	455292.790	-112.01254292	616560.29	1853538.38
4594	7178211.44	14963799.00	2187923.224	456097.507	-112.005168409	616548.44	1856178.21
4608	7178185.41	1499021.65	2187915.289	456902.712	-112.001772163	616522.53	1858820.51
4615	7178160.65	1501671.31	2187907.741	457710.332	-111.994365745	616497.65	1861470.26
4679	7175590.70	1482810.20	2187124.420	451961.452	-112.034591491	613927.68	1842607.95
4687	7175537.16	1496369.08	2187108.100	456094.208	-112.005162553	613874.04	1856167.88
4691	7175498.70	1501673.58	2187096.378	457711.022	-111.994343881	613853.73	1861472.52
4736	7174680.33	1482795.58	2186640.558	451956.386	-112.034598067	612417.94	1845293.42
4766	7172934.29	1482767.36	2186314.765	451948.366	-112.034625190	611271.51	1842621.87
4781	7172859.94	1496357.69	2186292.081	456090.736	-112.005157406	611196.23	1856156.51
4783	7172846.72	1499033.93	2186288.052	456904.456	-112.001717641	611183.59	1858832.74
4786	7172836.30	1501675.23	2186284.876	457711.525	-111.994322807	611173.28	1861474.07
4854	7170220.47	1496343.66	2185487.569	456086.459	-112.005155934	608557.37	1856142.40
4855	7170199.53	1496343.50	2185481.187	456086.412	-112.005155977	608536.28	1856142.28
4857	7170174.58	1501677.53	2185473.583	457712.228	-111.994300899	608511.62	1861476.34
4946	7167584.67	1496331.42	2184684.176	456082.750	-112.005152179	605921.40	1856130.14
4951	7167540.63	1496330.86	2184670.754	456082.558	-112.005152178	605877.40	1856129.60
4954	7167525.33	1496336.65	2184666.090	456907.285	-112.001675556	605862.29	1858835.42
4956	7167513.05	1501678.83	2184662.348	457712.422	-111.994280300	605850.08	1861477.55
5013	7165908.97	1482647.71	2184173.422	451911.925	-112.034722004	604246.53	1842446.25
5014	7165900.33	1483008.57	2184170.789	452021.916	-112.034258264	604237.88	1842807.62
5016	7165768.42	1488252.20	2184130.584	453621.093	-112.023515851	604105.85	1848054.24
5035	7164949.04	1496319.44	2183880.836	456079.078	-112.005148101	603285.79	1856118.29
5037	7164905.82	1496319.41	2183867.662	456079.068	-112.005147824	603242.30	1856118.26
5040	7164850.49	1501679.24	2183850.796	457712.749	-111.994260824	603187.62	1861477.74
5117	7162358.58	1488022.42	2183091.262	453550.140	-112.033788314	600695.88	1847921.35
5119	7162350.41	1491018.24	2183088.772	454463.269	-112.015939462	600487.14	1850817.38
5120	7162329.49	1493660.11	2183082.395	455268.511	-112.012545350	600665.73	1853459.42
5126	7162272.38	1496305.41	2183044.987	456074.802	-112.005146351	600608.12	1856104.90
5127	7162271.10	1496412.32	2183064.597	456107.386	-112.005099002	600607.50	1856211.76
5132	7162233.59	1499036.29	2183053.164	456907.174	-112.001637666	600570.39	1858833.34
5136	7162188.19	1501680.09	2183039.326	457713.006	-111.994240805	600525.20	1861478.87
14669	7166129.79	1482651.10	2184240.727	451912.960	-112.034719427	604467.34	1842450.15
14670	7165835.33	1485635.58	2184150.978	452822.630	-112.030882314	604172.82	1845434.62
14671	7164982.57	1488022.25	2183895.833	453604.953	-112.023537879	603335.64	1848001.26
14672	7162351.77	1488082.32	2183363.506	453548.398	-112.023718332	601589.10	1847881.28
14673	7162357.69	1488379.35	2183090.990	453658.932	-112.023329755	600649.42	1848178.30
1578	7162331.71	1493825.31	2183083.070	455318.866	-112.012333023	600667.91	1853624.94

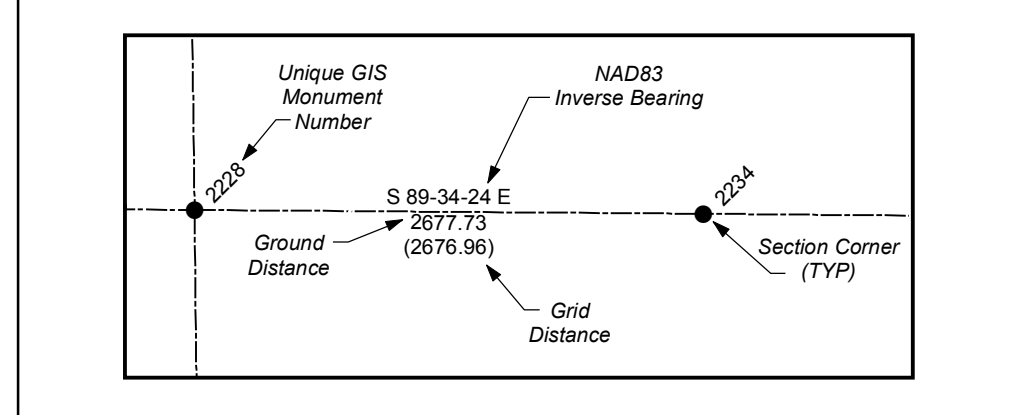


State Plane Coordinate & Dependent Resurvey

SE 1/4 of Township 9 South, Range 2 West Salt Lake Base & Meridian

LEGEND

- <all other values>
- Section Corner
- 1/4 Corner
- 1/16 Corner
- 1/64 or 1/256 Corner
- Closing Corner
- Meander Corner
- ▲ Reference Corner
- Witness Corner
- Amended Monument
- Angle Point
- × BENCH MARK
- △ HARN
- △ Triangulation Station
- Camp Williams Military Boundary
- County Boundary Monument
- Fort Crittenden Military Reservation
- Spanish Fork Indian Reservation
- US Forest Service Boundary
- Camp Williams Military Boundary
- Fort Crittenden Military Reservation
- US Forest Service Boundary
- Indian Reservation Boundary
- Township or Range Line
- Section Line
- Quarter Section Line
- Quarter/Quarter Section Line
- Unsurveyed NAD83
- Utah County Boundaries
- Utah Lake Meander Line



ALL BEARINGS AND DISTANCES SHOWN ARE BASED ON THE UTAH COORDINATE SYSTEM, 1983 CENTRAL ZONE.

THE MONUMENT NUMBERS LISTED ARE A UNIQUE G.I.S. NUMBER ASSIGNED TO EACH SURVEYED MONUMENT.

THE NAD83 NORTHINGS & EASTINGS LISTED WERE TRANSFERRED FROM N.G.S. HARN CONTROL STATIONS.

THE LATITUDES & LONGITUDES LISTED WERE CALCULATED FROM THE NAD83 NORTHINGS & EASTINGS THAT WERE TRANSFERRED FROM N.G.S. HARN CONTROL STATIONS.

THE NAD27 NORTHINGS & EASTINGS LISTED WERE TRANSFERRED FROM UNITED STATES COAST AND GEODETIC SURVEY STATIONS, WILLIAMS, ELBERTA, AND LAKE MOUNTAIN No. 2.

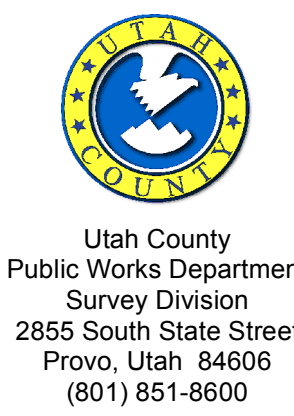
SECTION TIES, ORIGINAL GENERAL LAND OFFICE OR BUREAU OF LAND MANAGEMENT SURVEY NOTES, TRAVERSES CALCULATIONS, TIES TO TRAVERSE POINTS, GPS DATA, ETC. USED IN OBTAINING THIS INFORMATION ARE AVAILABLE IN THE UTAH COUNTY SURVEYOR'S OFFICE.

ALL SECTION CORNERS WERE ESTABLISHED AND VERIFIED PRIOR TO RESURVEY WORK ACCORDING TO THE RULES ESTABLISHED BY THE BUREAU OF LAND MANAGEMENT.

U.S. FOREST SERVICE BOUNDARY AS PER "STATUS AND ENCUMBRANCE MAPS" FURNISHED TO THE UTAH COUNTY SURVEY OFFICE IN THE YEAR 2000.

THE DATA SHOWN ON THIS PLAT WAS COMPILED FROM SURVEY DATA ACQUIRED USING HARN CONTROL POINTS PUBLISHED IN NAD83 STATE PLANE COORDINATES. THE GROUND DISTANCES SHOWN BETWEEN POINTS WERE CALCULATED BY APPLYING "COMBINED CONVERSION FACTORS" (COMMONLY CALLED GRID FACTORS) TO THE INVERSED DISTANCES BETWEEN THE STATE PLANE COORDINATES OF RESPECTIVE MONUMENT POINTS. BECAUSE GRID FACTORS ARE POTENTIALLY UNIQUE AT EACH POINT ON THE SURFACE OF THE EARTH, BASED ON LATITUDE AND ELEVATION, THE RESULTING ADJUSTMENTS FROM GRID TO GROUND WILL VARY FROM POINT TO POINT AROUND ANY GIVEN SECTION. THUS, A "PERFECT CLOSURE" AROUND A SECTION CAN NOT BE OBTAINED USING THE PUBLISHED GROUND DISTANCES.

UTAH COUNTY ASSUMES NO LIABILITY FOR DIRECT, INDIRECT, SPECIAL, OR CONSEQUENTIAL DAMAGES RESULTING FROM THE USE OR MISUSE OF THIS PLAT OR ANY INFORMATION CONTAINED HEREON.



Utah County
Public Works Department
Survey Division
2855 South State Street
Provo, Utah 84606
(801) 851-8600