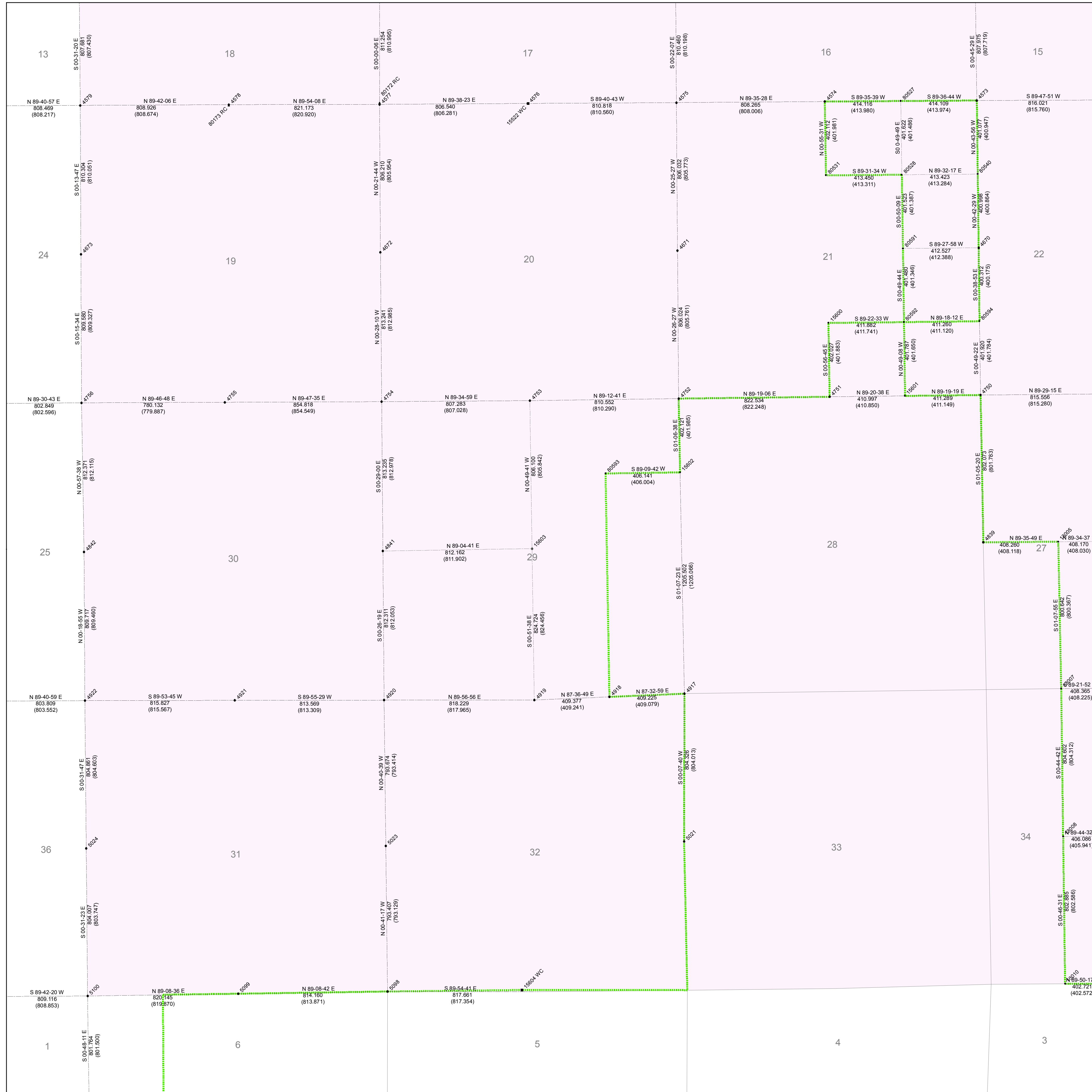


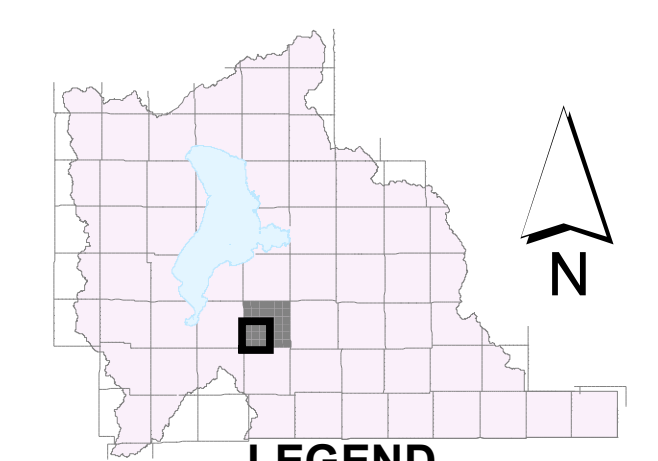
# SW of T 9 S, R 2 E

G.I.S. Monument Numbers	NAD83 Northings	NAD83 Eastings	NAD83 Latitudes	NAD83 Longitudes	NAD27 Northings	NAD27 Eastings
4573	2188039.550	482003.460	40 01 36.85441	-111 42 39.06214	616922.64	1941170.50
4574	2188033.815	481175.525	40 01 36.60371	-111 43 13.98223	616908.62	1938454.92
4575	2188028.048	480367.540	40 01 36.35072	-111 43 48.06080	616889.47	1935804.12
4576	2188023.502	479556.993	40 01 36.13434	-111 44 22.24750	616874.25	1933144.75
4577	2188018.432	478750.727	40 01 35.89855	-111 44 56.25351	616858.26	1930498.35
4578	2188013.031	477929.808	40 01 35.77760	-111 45 30.87794	616853.71	1927806.52
4579	2188018.819	477121.145	40 01 35.56384	-111 46 04.98504	616840.34	1925153.25
4670	2187237.802	482013.538	40 01 10.85834	-111 42 38.55740	614297.33	1941202.95
4671	2187222.297	480373.504	40 01 10.22460	-111 43 47.72189	614245.88	1938523.88
4672	2187212.465	478755.821	40 01 09.76637	-111 44 55.94407	614213.96	1935015.97
4673	2187202.774	477124.394	40 01 09.29832	-111 46 04.74564	614182.61	19325163.84
4750	2186435.911	482023.835	40 00 44.85760	-111 42 38.04352	611666.54	1941238.11
4751	2186426.341	481201.892	40 00 44.48312	-111 43 12.70321	611634.81	1938540.58
4752	2186416.560	480379.702	40 00 44.08890	-111 43 47.37318	611602.38	1935844.24
4753	2186406.408	479559.488	40 00 43.68839	-111 44 21.53788	611565.84	1933185.00
4754	2186399.537	478762.481	40 00 43.40963	-111 44 55.56784	611546.83	1930537.49
4755	2186396.451	477907.938	40 00 43.22795	-111 45 31.60261	611536.92	1927734.12
4756	2186393.456	477128.057	40 00 43.05638	-111 46 04.48892	611527.27	1925175.58
4839	2185534.272	482039.073	40 00 18.86537	-111 42 37.32144	609036.66	1941236.61
4941	2185586.588	478769.339	40 00 17.04715	-111 44 55.18334	608879.55	1930559.93
4842	2185581.455	477141.672	40 00 16.72836	-111 46 03.81230	608863.13	1925219.99
4917	2184909.817	480411.112	39 59 52.00236	-111 43 45.87487	606330.75	1935946.29
4918	2184732.328	480002.407	39 59 51.40092	-111 44 03.10402	606273.31	1934805.43
4919	2184715.289	479353.520	39 59 50.81336	-111 44 20.34081	606217.57	1933263.82
4920	2184774.559	478775.555	39 59 50.71740	-111 44 54.82610	606215.18	1930580.34
4921	2184773.490	477962.247	39 59 50.60805	-111 45 29.11498	606212.06	1927912.08
4922	2184772.007	477146.127	39 59 50.48219	-111 46 03.52233	606207.56	1925234.62
5021	2184005.806	480409.320	39 59 25.93183	-111 43 45.86348	603693.04	1935940.33
5023	2183981.200	478784.938	39 59 24.99328	-111 44 54.33759	603612.44	1933610.98
5024	2183967.439	477153.566	39 59 24.39450	-111 46 03.10725	603567.99	1925258.46
5098	2183188.128	478794.461	39 58 59.27843	-111 44 53.84336	601010.65	1930642.09
5099	2183175.983	477980.681	39 58 58.80997	-111 45 28.14367	600970.95	1927972.07
5100	2183163.725	477160.903	39 58 58.33445	-111 46 02.69666	600930.88	1925262.37
13005	2185837.143	482447.181	40 00 18.86924	-111 42 20.11393	609046.38	1942625.76
13007	2184836.932	482462.994	39 59 53.04328	-111 42 19.36970	606420.60	1942678.16
13008	2184032.688	482473.453	39 59 26.96611	-111 42 18.85095	603782.09	1942711.11
13010	2183230.175	482484.314	39 59 00.94506	-111 42 18.31552	601148.98	1942748.42
15522	2189223.509	479560.065	40 01 36.13483	-111 44 22.11793	616874.31	1933154.75
15600	2186828.169	481186.259	40 00 87.51196	-111 43 13.02465	612953.13	1938519.03
15601	2186431.046	481612.715	40 00 44.66811	-111 42 55.37963	611650.41	1939687.86
15602	2186014.651	480387.494	40 00 31.06753	-111 43 47.00107	610283.77	1935869.60
15603	2185599.651	479581.136	40 00 17.54250	-111 44 20.95585	608922.20	1933223.61
15604	2183196.619	479526.946	39 58 59.61855	-111 44 22.96919	601038.42	1933045.30
80172	2188028.987	478750.686	40 01 36.24080	-111 44 56.25648	616893.25	1930499.35
80173	2188013.466	477930.107	40 01 35.66204	-111 45 30.86489	616842.01	1927807.50
80527	2188036.748	481589.495	40 01 36.73155	-111 42 56.52209	616918.34	1939812.72
80528	2187635.304	481595.314	40 01 23.71511	-111 42 56.23984	615601.33	1939831.40
80531	2187631.886	481182.017	40 01 23.57161	-111 43 13.66663	615589.97	1938478.01
80540	2187638.635	482008.584	40 01 23.85506	-111 42 38.80617	615612.35	1941187.00
80591	2187233.960	481601.169	40 01 10.70190	-111 42 55.94811	614284.64	1939860.26
80592	2186832.655	481606.975	40 00 57.68994	-111 42 55.66248	612968.03	1939869.17
80593	2186808.711	479981.534	40 00 30.84077	-111 44 04.11847	610264.29	1934537.44
80594	2186637.653	482018.065	40 00 57.88376	-111 42 38.26674	612964.94	1941217.49



## State Plane Coordinate & Dependent Resurvey

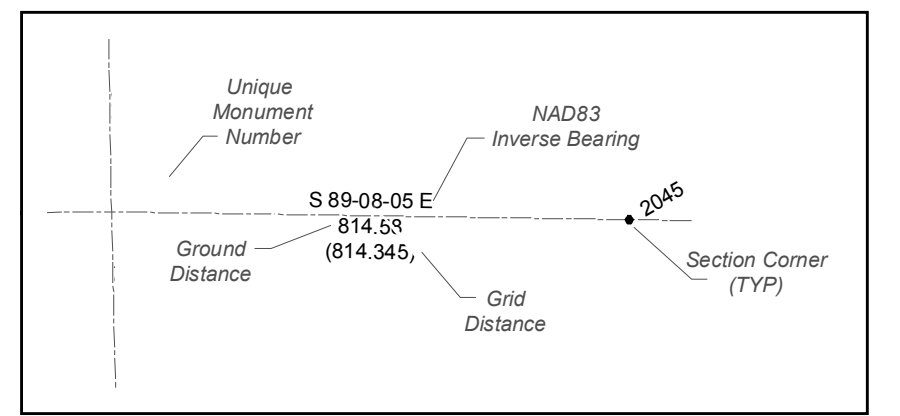
SW 1/4 of Township 9 South, Range 2 East Salt Lake Base & Meridian



### LEGEND

- Other Corners
- Section Corner
- 1/16 or 1/64 Corner
- Meander Corner
- Reference Corner
- Witness Corner
- Angle Point
- Traverse Point
- Township or Range Line
- Section Line
- Quarter Section Line
- Quarter/Quarter Section Line
- Camp Williams Boundary
- US Forest Service Boundary
- Indian Reservation Boundary
- Utah County Boundaries
- Utah Lake Meander Line

1 Foot = 0.3048 meters  
3.2808 Feet = 1 meter



ALL BEARINGS AND DISTANCES SHOWN ARE BASED ON THE UTAH COORDINATE SYSTEM, 1983 CENTRAL ZONE.

THE MONUMENT NUMBERS LISTED ARE A UNIQUE G.I.S. NUMBER ASSIGNED TO EACH SURVEYED MONUMENT.

THE NAD83 NORTHINGS & EASTINGS LISTED WERE TRANSFERRED FROM N.G.S. HARN CONTROL STATIONS.

THE LATITUDES & LONGITUDES LISTED WERE CALCULATED FROM THE NAD83 NORTHINGS & EASTINGS THAT WERE TRANSFERRED FROM N.G.S. HARN CONTROL STATIONS.

THE NAD27 NORTHINGS & EASTINGS LISTED WERE TRANSFERRED FROM UNITED STATES COAST AND GEODETIC SURVEY STATIONS, WILLIAMS, ELBERTA, AND LAKE MOUNTAIN No. 2.

SECTION TIES, ORIGINAL GENERAL LAND OFFICE OR BUREAU OF LAND MANAGEMENT SURVEY NOTES, TRAVERSES, CALCULATIONS, TIES TO TRAVERSE POINTS, GPS DATA, ETC. USED IN OBTAINING THIS INFORMATION ARE AVAILABLE IN THE UTAH COUNTY SURVEYOR'S OFFICE.

ALL SECTION CORNERS WERE ESTABLISHED AND VERIFIED PRIOR TO RESURVEY WORK ACCORDING TO THE RULES ESTABLISHED BY THE BUREAU OF LAND MANAGEMENT.

U.S. FOREST SERVICE BOUNDARY AS PER "STATUS AND ENCUMBRANCE MAPS" FURNISHED TO THE UTAH COUNTY SURVEY OFFICE IN THE YEAR 2000.

THE DATA SHOWN ON THIS PLAT WAS COMPILED FROM SURVEY DATA ACQUIRED USING HARN CONTROL POINTS PUBLISHED IN NAD83 STATE PLANE COORDINATES. THE GROUND DISTANCES SHOWN BETWEEN POINTS WERE CALCULATED BY APPLYING "COMBINED CONVERSION FACTORS" (COMMONLY CALLED GRID FACTORS) TO THE INVERSED DISTANCES BETWEEN THE STATE PLANE COORDINATES OF RESPECTIVE MONUMENT POINTS. BECAUSE GRID FACTORS ARE POTENTIALLY UNIQUE AT EACH POINT ON THE SURFACE OF THE EARTH, BASED ON LATITUDE AND ELEVATION, THE RESULTING ADJUSTMENTS FROM GRID TO GROUND WILL VARY FROM POINT TO POINT AROUND ANY GIVEN SECTION. THUS, A "PERFECT CLOSURE" AROUND A SECTION CAN NOT BE OBTAINED USING THE PUBLISHED GROUND DISTANCES.

UTAH COUNTY ASSUMES NO LIABILITY FOR DIRECT, INDIRECT, SPECIAL, OR CONSEQUENTIAL DAMAGES RESULTING FROM THE USE OR MISUSE OF THIS PLAT OR ANY INFORMATION CONTAINED HEREON.



Utah County  
Public Works Department  
Survey Division  
2855 South State Street  
Provo, Utah 84606  
(801) 851-8600