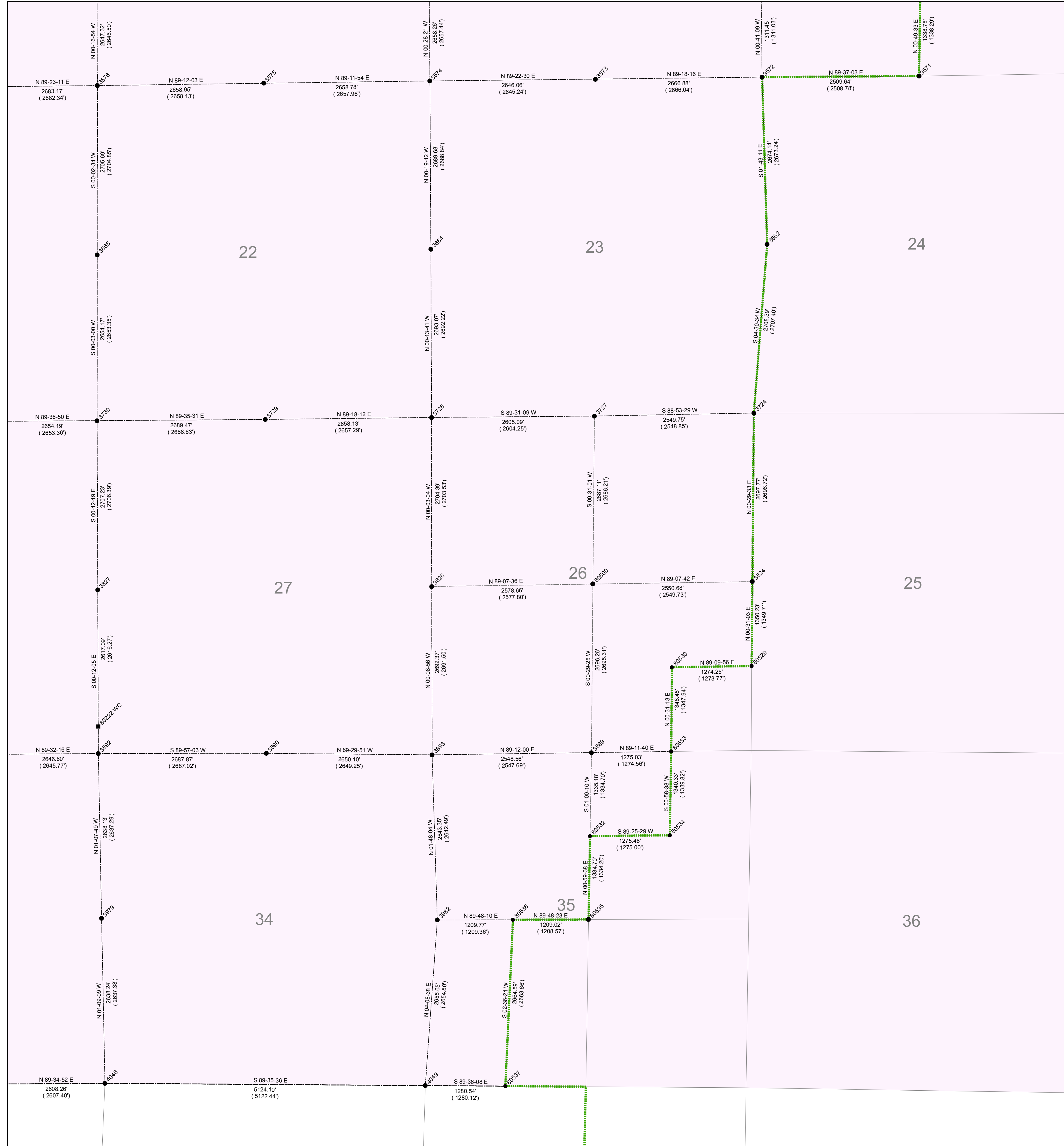


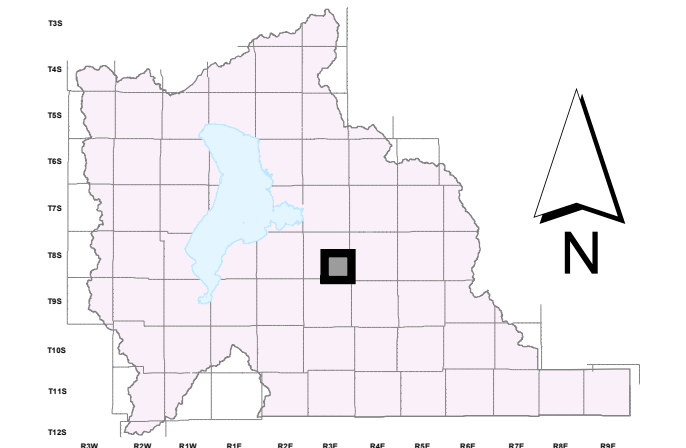
SE of T 8 S, R 3 E

GIS Monument Number	NAD 83 Northings US Survey Feet	NAD 83 Eastings US Survey Feet	NAD 83 Northings Meters	NAD 83 Eastings Meters	NAD 83 Longitude	NAD 83 Latitude	NAD 27 Northings	NAD 27 Eastings
3571	7211002.50	162824.98	219791.757	495679.516	-111.3332246678	44933.735	198610.611	
3572	7210985.75	1623733.16	219791.852	494914.857	-111.3332246678	44920.505	1983529.26	
3573	7210953.38	1621047.32	219792.987	494102.306	-111.3332246678	44928.229	1980863.32	
3574	7210924.52	1618422.24	219794.190	493296.086	-111.3332246678	44922.209	1978218.35	
3575	7210887.33	1615764.54	219782.853	492486.016	-111.3332246678	44922.209	1975560.69	
3576	7210850.26	1613106.67	219781.555	491675.897	-111.3332246678	44918.473	1972902.95	
3662	7208313.71	1623813.38	219798.413	494939.307	-111.3332246678	44664.837	1983609.75	
3664	7208235.72	1618437.26	2197074.641	493300.664	-111.3332246678	44657.055	1978233.15	
3665	7208145.41	1613104.65	2197047.314	491675.281	-111.3332246678	44648.032	1972900.91	
3724	7205614.69	1623600.51	2196275.750	494874.426	-111.3332246678	44794.932	1983396.93	
3727	7205565.38	1621052.14	2196260.721	494097.681	-111.3332246678	44790.320	1980848.07	
3728	7205543.52	1618447.98	2196254.057	493303.932	-111.3332246678	44787.855	1978243.79	
3729	7205511.21	1615790.89	2196244.210	492494.048	-111.3332246678	44782.854	1975587.14	
3730	7205492.06	1613102.33	2196238.373	491674.573	-111.3332246678	44782.854	1972989.50	
3824	7202918.07	1623577.33	2195453.818	494867.359	-111.3332246678	64125.297	1983373.57	
3826	7202839.99	1618450.40	2195430.019	493304.667	-111.3332246678	64117.507	1978246.40	
3827	7202785.69	1613112.03	2195413.470	491677.531	-111.3332246678	64112.055	1972908.06	
3889	7200184.07	1621004.83	2194620.493	494083.262	-111.3332246678	63851.940	1980800.82	
3890	7200171.74	1615808.22	2194616.736	492499.330	-111.3332246678	63850.701	1975604.02	
3892	7200149.44	1613121.22	2194616.036	491680.332	-111.3332246678	63850.444	1972917.05	
3893	7200148.50	1618457.29	2194609.651	493306.798	-111.3332246678	63848.389	1978253.40	
3979	7197532.66	1613127.24	2193812.343	491496.188	-111.3332246678	63564.721	1972969.58	
3982	7197507.32	1618540.44	2193804.619	493322.113	-111.3332246678	63584.244	1978335.97	
4046	7194895.81	1613226.29	2193008.629	491712.357	-111.3332246678	63323.079	1973021.91	
4049	7194859.46	1618348.60	2192997.549	493273.640	-111.3332246678	63319.481	1978144.05	
80222	7206062.02	1613119.80	2194747.887	491679.899	-111.3332246678	63893.726	1972915.56	
80500	7202879.28	1621027.90	2195441.995	494090.292	-111.3332246678	64121.427	1980824.02	
80529	7201568.41	1623565.14	2195042.443	494863.644	-111.3332246678	63990.346	1983361.28	
80530	7201549.87	1622291.51	2195036.789	494475.441	-111.3332246678	63985.003	1980827.57	
80532	7198849.57	1620981.48	2194213.737	494076.144	-111.3332246678	63718.546	1980777.48	
80533	7200201.99	1622279.27	2194625.957	494471.711	-111.3332246678	63853.729	1982075.29	
80534	7198862.37	1622256.43	2194217.639	494464.747	-111.3332246678	63719.744	1982052.38	
80535	7197515.57	1620958.34	2193807.133	494069.091	-111.3332246678	63585.093	1980754.20	
80536	7197511.49	1619479.78	2193805.888	493700.722	-111.3332246678	63584.495	1979545.63	
80537	7194850.57	1619628.69	2192994.841	493663.811	-111.3332246678	63318.596	1979424.27	

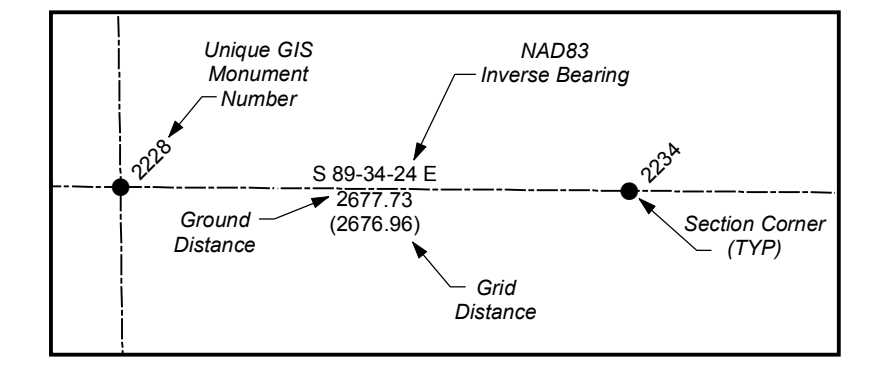


State Plane Coordinate & Dependent Resurvey

SE 1/4 of Township 8 South, Range 3 East Salt Lake Base & Meridian



- LEGEND**
- <all other values>
 - Section Corner
 - 1/4 Corner
 - 1/16 Corner
 - 1/64 or 1/256 Corner
 - Closing Corner
 - ◆ Meander Corner
 - ▲ Reference Corner
 - Witness Corner
 - Amended Monument
 - ⊙ Angle Point
 - ⊗ Bench Mark
 - △ HARN
 - △ Triangulation Station
 - Camp Williams Military Boundary
 - County Boundary Monument
 - Fort Crittenden Military Reservation
 - Spanish Fork Indian Reservation
 - US Forest Service Boundary
 - Camp Williams Military Boundary
 - Fort Crittenden Military Reservation
 - US Forest Service Boundary
 - Indian Reservation Boundary
 - Township or Range Line
 - Section Line
 - Quarter Section Line
 - Quarter/Quarter Section Line
 - Unsurveyed NAD83
 - Utah County Boundaries
 - Utah Lake Meander Line



ALL BEARINGS AND DISTANCES SHOWN ARE BASED ON THE UTAH COORDINATE SYSTEM, 1983 CENTRAL ZONE.

THE MONUMENT NUMBERS LISTED ARE A UNIQUE G.I.S. NUMBER ASSIGNED TO EACH SURVEYED MONUMENT.

THE NAD83 NORTHINGS & EASTINGS LISTED WERE TRANSFERRED FROM N.G.S. HARN CONTROL STATIONS.

THE LATITUDES & LONGITUDES LISTED WERE CALCULATED FROM THE NAD83 NORTHINGS & EASTINGS THAT WERE TRANSFERRED FROM N.G.S. HARN CONTROL STATIONS.

THE NAD27 NORTHINGS & EASTINGS LISTED WERE TRANSFERRED FROM UNITED STATES COAST AND GEODETIC SURVEY STATIONS, WILLIAMS, ELBERTA, AND LAKE MOUNTAIN No. 2.

SECTION TIES, ORIGINAL GENERAL LAND OFFICE OR BUREAU OF LAND MANAGEMENT SURVEY NOTES, TRAVERSES CALCULATIONS, TIES TO TRAVERSE POINTS, GPS DATA, ETC. USED IN OBTAINING THIS INFORMATION ARE AVAILABLE IN THE UTAH COUNTY SURVEYOR'S OFFICE.

ALL SECTION CORNERS WERE ESTABLISHED AND VERIFIED PRIOR TO RESURVEY WORK ACCORDING TO THE RULES ESTABLISHED BY THE BUREAU OF LAND MANAGEMENT.

U.S. FOREST SERVICE BOUNDARY AS PER "STATUS AND ENCUMBRANCE MAPS" FURNISHED TO THE UTAH COUNTY SURVEY OFFICE IN THE YEAR 2000.

THE DATA SHOWN ON THIS PLAT WAS COMPILED FROM SURVEY DATA ACQUIRED USING HARN CONTROL POINTS PUBLISHED IN NAD83 STATE PLANE COORDINATES. THE GROUND DISTANCES SHOWN BETWEEN POINTS WERE CALCULATED BY APPLYING "COMBINED CONVERSION FACTORS" (COMMONLY CALLED GRID FACTORS) TO THE INVERSED DISTANCES BETWEEN THE STATE PLANE COORDINATES OF RESPECTIVE MONUMENT POINTS. BECAUSE GRID FACTORS ARE POTENTIALLY UNIQUE AT EACH POINT ON THE SURFACE OF THE EARTH, BASED ON LATITUDE AND ELEVATION, THE RESULTING ADJUSTMENTS FROM GRID TO GROUND WILL VARY FROM POINT TO POINT AROUND ANY GIVEN SECTION. THUS, A "PERFECT CLOSURE" AROUND A SECTION CAN NOT BE OBTAINED USING THE PUBLISHED GROUND DISTANCES.

UTAH COUNTY ASSUMES NO LIABILITY FOR DIRECT, INDIRECT, SPECIAL, OR CONSEQUENTIAL DAMAGES RESULTING FROM THE USE OR MISUSE OF THIS PLAT OR ANY INFORMATION CONTAINED HEREON.



Utah County
Public Works Department
Survey Division
2855 South State Street
Provo, Utah 84606
(801) 851-8600