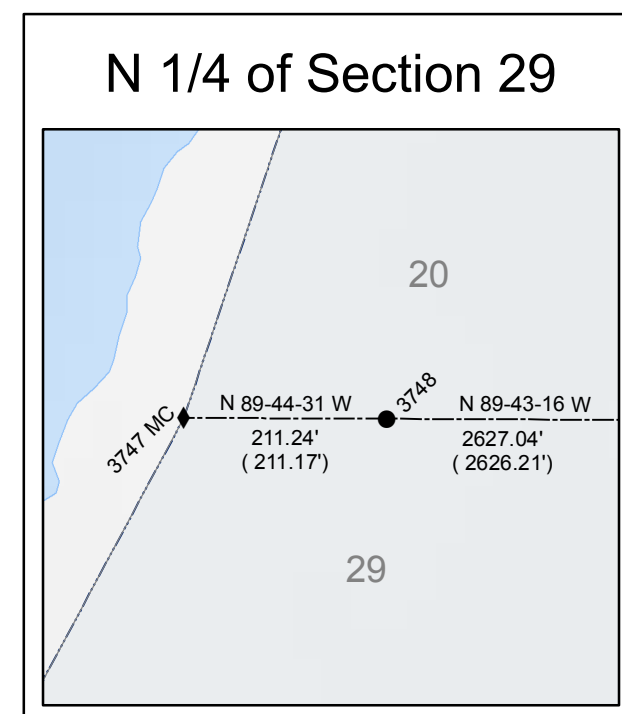
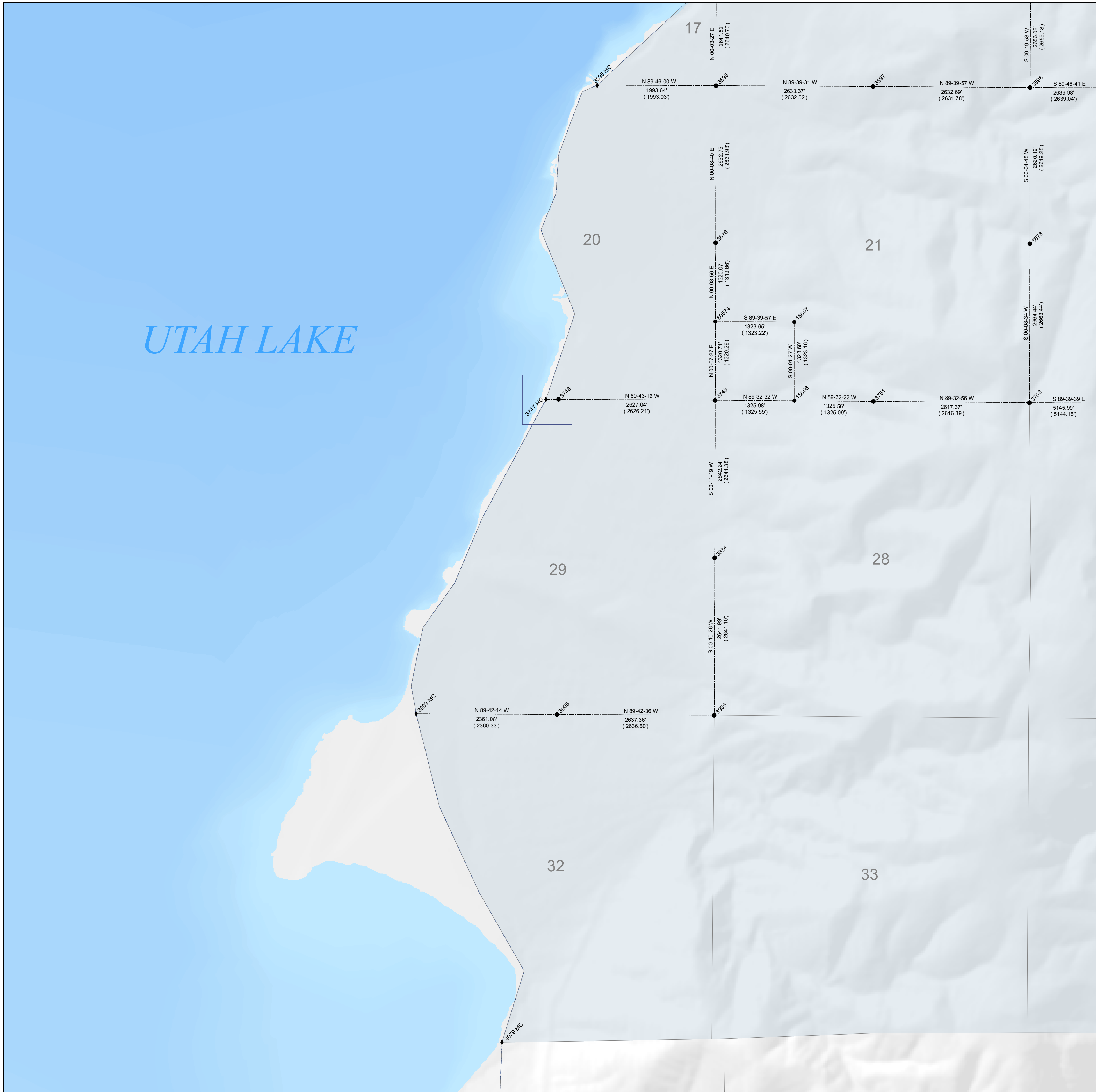


SW of T 8 S, R 1 E

GIS Monument Numbers	NAD 83 Northings US Survey Feet	NAD 83 Eastings US Survey Feet	NAD 83 Northings Meters	NAD 83 Eastings Meters	NAD 83 Latitudes	NAD 83 Longitudes	NAD 27 Northings	NAD 27 Eastings
3595	7,210,485.53	1,542,073.10	2,197,760.385	470,024.821	40 06 50.82900	-111 51 05.90762	648,817.92	1,901,868.07
3596	7,210,477.41	1,544,066.11	2,197,757.911	470,632.291	40 06 50.82543	-111 50 40.25289	648,809.96	1,903,860.94
3597	7,210,461.73	1,546,698.58	2,197,753.131	471,434.669	40 06 50.76928	-111 50 06.36654	648,794.48	1,906,493.53
3598	7,210,446.38	1,549,330.31	2,197,748.463	472,234.823	40 06 50.71348	-111 49 32.48948	648,779.33	1,909,125.39
3676	7,207,845.49	1,544,059.48	2,196,955.700	470,630.372	40 06 54.81400	-111 50 40.20767	646,178.32	1,903,855.04
3678	7,207,827.13	1,549,326.69	2,196,950.104	472,235.719	40 06 54.82757	-111 49 32.41355	646,160.10	1,909,120.07
3747	7,205,219.28	1,541,215.84	2,196,155.230	469,763.528	40 05 58.74939	-111 51 16.67363	643,551.83	1,901,010.24
3748	7,205,218.33	1,541,427.01	2,196,154.940	469,827.892	40 05 58.74825	-111 51 13.95597	643,550.84	1,901,222.89
3749	7,205,205.55	1,544,053.19	2,196,151.045	470,628.353	40 05 58.72329	-111 50 40.15783	643,538.61	1,903,849.49
3751	7,205,184.31	1,546,703.74	2,196,144.571	471,436.243	40 05 58.61287	-111 50 06.04563	643,517.34	1,906,499.74
3753	7,205,163.71	1,549,320.05	2,196,138.290	472,233.695	40 05 58.50471	-111 49 32.37420	643,496.70	1,909,115.74
3834	7,202,364.19	1,544,044.49	2,195,345.957	470,625.701	40 05 52.81839	-111 50 40.13889	640,897.37	1,903,841.25
3903	7,199,948.45	1,539,039.70	2,194,548.729	469,100.240	40 05 06.57354	-111 51 44.40453	638,281.35	1,898,836.94
3905	7,199,934.46	1,541,400.00	2,194,545.022	469,819.661	40 05 06.54641	-111 51 14.03455	638,269.41	1,901,197.12
3906	7,199,923.11	1,544,036.47	2,194,540.953	470,623.258	40 05 06.51620	-111 50 40.11114	638,256.32	1,903,833.57
4079	7,194,443.75	1,540,478.79	2,192,870.841	469,538.873	40 04 12.22555	-111 51 25.60545	632,776.84	1,900,276.96
15606	7,205,194.96	1,545,378.69	2,196,147.817	471,032.367	40 05 58.66873	-111 50 23.09882	643,528.24	1,905,174.90
15607	7,206,518.12	1,545,379.25	2,196,551.116	471,032.537	40 06 11.74549	-111 50 23.15632	644,850.92	1,905,175.46
80574	7,206,525.84	1,544,056.05	2,196,553.469	470,629.227	40 06 11.77177	-111 50 40.18638	644,858.43	1,903,852.26

UTAH LAKE

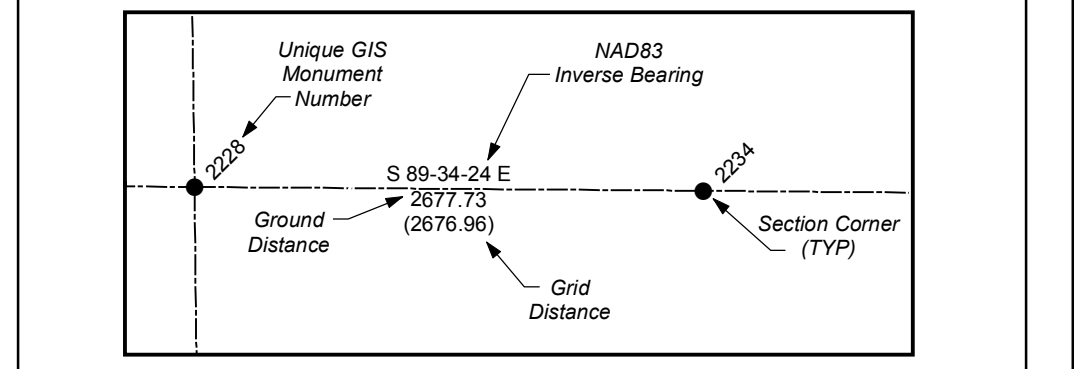


State Plane Coordinate & Dependent Resurvey

SW 1/4 of Township 8 South, Range 1 East Salt Lake Base & Meridian

LEGEND

- <all other values>
- Section Corner
- 1/4 Corner
- 1/16 Corner
- 1/64 or 1/256 Corner
- Closing Corner
- ◆ Meander Corner
- ▲ Reference Corner
- Witness Corner
- ⊙ Amended Monument
- ⊙ Angle Point
- ⊗ Bench Mark
- △ HARN
- △ Triangulation Station
- Camp Williams Military Boundary
- County Boundary Monument
- Fort Crittenden Military Reservation
- Spanish Fork Indian Reservation
- US Forest Service Boundary
- Camp Williams Military Boundary
- Fort Crittenden Military Reservation
- US Forest Service Boundary
- Indian Reservation Boundary
- Township or Range Line
- Section Line
- Quarter Section Line
- Quarter/Quarter Section Line
- Unsurveyed NAD83
- Utah County Boundaries
- Utah Lake Meander Line



ALL BEARINGS AND DISTANCES SHOWN ARE BASED ON THE UTAH COORDINATE SYSTEM, 1983 CENTRAL ZONE.

THE MONUMENT NUMBERS LISTED ARE A UNIQUE G.I.S. NUMBER ASSIGNED TO EACH SURVEYED MONUMENT.

THE NAD83 NORTHINGS & EASTINGS LISTED WERE TRANSFERRED FROM N.G.S. HARN CONTROL STATIONS.

THE LATITUDES & LONGITUDES LISTED WERE CALCULATED FROM THE NAD83 NORTHINGS & EASTINGS THAT WERE TRANSFERRED FROM N.G.S. HARN CONTROL STATIONS.

THE NAD27 NORTHINGS & EASTINGS LISTED WERE TRANSFERRED FROM UNITED STATES COAST AND GEODETIC SURVEY STATIONS, WILLIAMS, ELBERTA, AND LAKE MOUNTAIN No. 2.

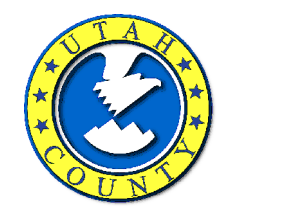
SECTION TIES, ORIGINAL GENERAL LAND OFFICE OR BUREAU OF LAND MANAGEMENT SURVEY NOTES, TRAVERSES, CALCULATIONS, TIES TO TRAVERSE POINTS, GPS DATA, ETC. USED IN OBTAINING THIS INFORMATION ARE AVAILABLE IN THE UTAH COUNTY SURVEYOR'S OFFICE.

ALL SECTION CORNERS WERE ESTABLISHED AND VERIFIED PRIOR TO RESURVEY WORK ACCORDING TO THE RULES ESTABLISHED BY THE BUREAU OF LAND MANAGEMENT.

U.S. FOREST SERVICE BOUNDARY AS PER "STATUS AND ENCUMBRANCE MAPS" FURNISHED TO THE UTAH COUNTY SURVEY OFFICE IN THE YEAR 2000.

THE DATA SHOWN ON THIS PLAT WAS COMPILED FROM SURVEY DATA ACQUIRED USING HARN CONTROL POINTS PUBLISHED IN NAD83 STATE PLANE COORDINATES. THE GROUND DISTANCES SHOWN BETWEEN POINTS WERE CALCULATED BY APPLYING "COMBINED CONVERSION FACTORS" (COMMONLY CALLED GRID FACTORS) TO THE INVERSED DISTANCES BETWEEN THE STATE PLANE COORDINATES OF RESPECTIVE MONUMENT POINTS. BECAUSE GRID FACTORS ARE POTENTIALLY UNIQUE AT EACH POINT ON THE SURFACE OF THE EARTH BASED ON LATITUDE AND ELEVATION, THE RESULTING ADJUSTMENTS FROM GRID TO GROUND WILL VARY FROM POINT TO POINT AROUND ANY GIVEN SECTION. THUS, A "PERFECT CLOSURE" AROUND A SECTION CAN NOT BE OBTAINED USING THE PUBLISHED GROUND DISTANCES.

UTAH COUNTY ASSUMES NO LIABILITY FOR DIRECT, INDIRECT, SPECIAL, OR CONSEQUENTIAL DAMAGES RESULTING FROM THE USE OR MISUSE OF THIS PLAT OR ANY INFORMATION CONTAINED HEREON.



Utah County
Public Works Department
Survey Division
2855 South State Street
Provo, Utah 84606
(801) 851-8600