

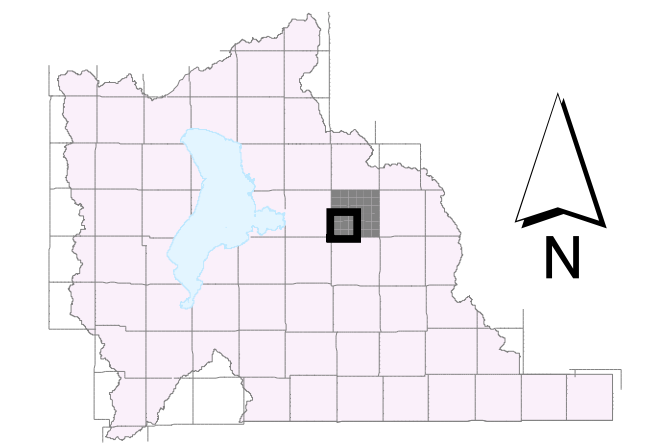
SW of T 7 S, R 4 E

G.I.S. Monument Numbers	NAD27 Northings	NAD27 Eastings
2733	681,040.63	2,000,445.75
2791	678,390.97	2,000,443.75
2853	675,759.19	2,000,464.04
2914	673,128.36	2,000,461.07
2979	670,497.07	2,000,457.85
3046	667,852.44	2,000,459.45
3117	665,200.39	1,992,590.65
3119	665,185.83	1,988,562.61
3139	665,112.40	1,996,023.23
15345	681,048.12	2,000,603.69
15405	678,634.41	2,000,439.95



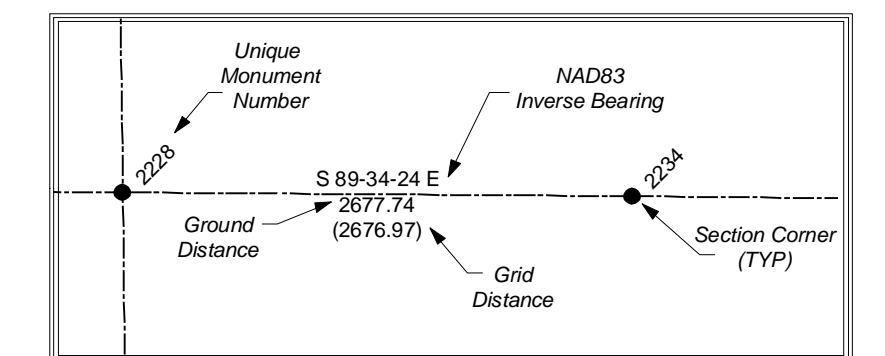
State Plane Coordinate & Dependent Resurvey

SW 1/4 of Township 7 South, Range 4 East Salt Lake Base & Meridian



LEGEND

- Section Corner
- 1/4 Corner
- 1/16 Corner
- 1/64 or 1/256 Corner
- Other
- Closing Corner
- ◆ Meander Corner
- ▲ Reference Corner
- Witness Corner
- Angle Point
- Traverse Point
- × Bench Mark
- △ HARN
- ▲ Triangulation Station
- Township or Range Line
- Section Line
- Quarter Section Line
- Quarter/Quarter Section Line
- Camp Williams Military Boundary
- Fort Crittenden Military Reservation
- US Forest Service Boundary
- Indian Reservation Boundary
- Utah County Boundaries
- Utah Lake Meander Line



ALL BEARINGS AND DISTANCES SHOWN ARE BASED ON THE UTAH COORDINATE SYSTEM, 1983 CENTRAL ZONE.

THE MONUMENT NUMBERS LISTED ARE A UNIQUE G.I.S. NUMBER ASSIGNED TO EACH SURVEYED MONUMENT.

THE NAD83 NORTHINGS & EASTINGS LISTED WERE TRANSFERRED FROM N.G.S. HARN CONTROL STATIONS.

THE LATITUDES & LONGITUDES LISTED WERE CALCULATED FROM THE NAD83 NORTHINGS & EASTINGS THAT WERE TRANSFERRED FROM N.G.S. HARN CONTROL STATIONS.

THE NAD27 NORTHINGS & EASTINGS LISTED WERE TRANSFERRED FROM UNITED STATES COAST AND GEODETIC SURVEY STATIONS; WILLIAMS, ELBERTA, AND LAKE MOUNTAIN No. 2.

SECTION TIES, ORIGINAL GENERAL LAND OFFICE OR BUREAU OF LAND MANAGEMENT SURVEY NOTES, TRAVERSES, CALCULATIONS, TIES TO TRAVERSE POINTS, GPS DATA, ETC. USED IN OBTAINING THIS INFORMATION ARE AVAILABLE IN THE UTAH COUNTY SURVEYOR'S OFFICE.

ALL SECTION CORNERS WERE ESTABLISHED AND VERIFIED PRIOR TO RESURVEY WORK ACCORDING TO THE RULES ESTABLISHED BY THE BUREAU OF LAND MANAGEMENT.

U.S. FOREST SERVICE BOUNDARY AS PER 'STATUS AND ENCUMBRANCE MAPS' FURNISHED TO THE UTAH COUNTY SURVEY OFFICE IN THE YEAR 2000.

THE DATA SHOWN ON THIS PLAN WAS COMPILED FROM SURVEY DATA ACQUIRED USING HARN CONTROL POINTS PUBLISHED IN NAD83 STATE PLANE COORDINATES. THE GROUND DISTANCES SHOWN BETWEEN POINTS WERE CALCULATED BY APPLYING 'COMBINED CONVERSION FACTORS' (COMMONLY CALLED GRID FACTORS) TO THE INVERSED DISTANCES BETWEEN THE STATE PLANE COORDINATES OF RESPECTIVE MONUMENT POINTS. BECAUSE GRID FACTORS ARE POTENTIALLY UNIQUE AT EACH POINT ON THE SURFACE OF THE EARTH, BASED ON LATITUDE AND ELEVATION, THE RESULTING ADJUSTMENTS FROM GRID TO GROUND WILL VARY FROM POINT TO POINT AROUND ANY GIVEN SECTION. THIS A 'PERFECT CLOSURE' AROUND A SECTION CAN NOT BE OBTAINED USING THE PUBLISHED GROUND DISTANCES.

UTAH COUNTY ASSUMES NO LIABILITY FOR DIRECT, INDIRECT, SPECIAL, OR CONSEQUENTIAL DAMAGES RESULTING FROM THE USE OR MISUSE OF THIS PLAN OR ANY INFORMATION CONTAINED HEREON.



Utah County
Public Works Department
Survey Division
2855 South State Street
Provo, Utah 84606
(801) 851-8600