

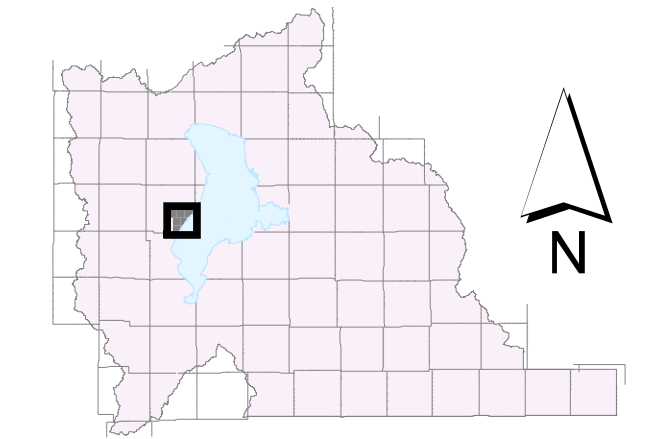
# SE 1/4 of T 7 S, R 1 W

GIS Monument Numbers	NAD 83 Northings US Survey Feet	NAD 83 Eastings US Survey Feet	NAD 83 Northings Meters	NAD 83 Eastings Meters	NAD 83 Latitudes	NAD 83 Longitudes	NAD 27 Northings	NAD 27 Eastings
2699	7243.08178	1.515.04474	2.207.495.741	461.786.559	40 12 11.77632	-111 56 55.92522	0.00	0.00
2700	7243.06708	1.517.685.93	2.207.491.262	462.591.598	40 12 11.76071	-111 56 21.88230	0.00	0.00
2702	7243.05427	1.520.330.83	2.207.487.358	463.397.764	40 12 11.76116	-111 55 47.79184	0.00	0.00
2704	7243.03696	1.522.981.17	2.207.482.087	464.205.590	40 12 11.75177	-111 55 13.63072	0.00	0.00
2707	7243.02649	1.525.614.16	2.207.476.950	465.008.126	40 12 11.73901	-111 54 39.69412	0.00	0.00
2711	7243.01476	1.528.259.28	2.207.475.313	465.814.361	40 12 11.73482	-111 54 05.60080	0.00	0.00
2713	7242.99611	1.531.567.85	2.207.469.630	467.127.614	40 12 11.73805	-111 53 10.06722	0.00	0.00
2727	7242.79080	1.532.567.10	2.207.460.050	467.127.385	40 12 09.70896	-111 53 10.06548	0.00	0.00
2759	7241.376.83	1.532.560.47	2.207.176.072	467.125.365	40 11 55.73486	-111 53 10.07222	0.00	0.00
2774	7240.444.82	1.515.031.60	2.206.891.994	461.782.556	40 11 45.71545	-111 56 55.92393	0.00	0.00
2775	7240.406.46	1.520.316.75	2.206.880.303	463.393.471	40 11 45.59299	-111 55 47.80933	0.00	0.00
2777	7240.385.01	1.525.601.50	2.206.873.765	463.004.206	40 11 45.62653	-111 54 39.70088	0.00	0.00
2877	7236.448.87	1.517.442.50	2.205.674.057	463.513.798	40 11 06.34908	-111 56 24.60016	0.00	0.00
2878	7236.458.77	1.515.012.05	2.205.677.045	461.776.597	40 11 06.32159	-111 56 55.91809	0.00	0.00
2879	7236.459.83	1.514.801.09	2.205.677.369	461.712.296	40 11 06.32162	-111 56 58.63648	0.00	0.00
2880	7236.440.42	1.520.089.54	2.205.671.450	463.324.218	40 11 06.38690	-111 55 50.49134	0.00	0.00
2881	7236.440.32	1.520.296.78	2.205.671.420	463.387.384	40 11 06.39578	-111 55 47.82100	0.00	0.00
2882	7236.418.05	1.527.554.13	2.205.664.633	465.599.429	40 11 06.51008	-111 54 14.30544	0.00	0.00
2884	7236.431.35	1.522.725.63	2.205.668.688	464.127.701	40 11 06.42142	-111 55 16.52356	0.00	0.00
2889	7236.424.02	1.525.366.48	2.205.666.453	464.932.633	40 11 06.47049	-111 54 42.49462	0.00	0.00
2890	7236.423.45	1.525.582.90	2.205.666.340	464.998.598	40 11 06.47647	-111 54 39.70592	0.00	0.00
2929	7233.809.33	1.517.431.07	2.204.869.492	462.513.915	40 10 40.25643	-111 56 24.59002	0.00	0.00
2931	7233.789.64	1.522.712.06	2.204.863.491	464.123.563	40 10 40.31338	-111 55 16.53818	0.00	0.00
3011	7231.170.44	1.517.419.18	2.204.065.159	462.510.290	40 10 14.17644	-111 56 24.56593	0.00	0.00
3012	7231.182.85	1.514.781.09	2.204.068.941	461.706.200	40 10 14.16959	-111 56 58.55239	0.00	0.00
3014	7231.158.73	1.520.059.00	2.204.061.588	463.314.909	40 10 14.18786	-111 55 50.55716	0.00	0.00
3017	7231.145.96	1.522.698.86	2.204.057.697	464.119.542	40 10 14.18595	-111 55 16.54772	0.00	0.00
3068	7228.531.26	1.517.406.37	2.203.261.343	462.506.387	40 09 48.11330	-111 56 24.56371	0.00	0.00
3154	7225.884.41	1.520.029.49	2.202.654.035	463.305.977	40 09 22.06353	-111 55 50.60748	664.232.75	1.879.823.36
3158	7225.905.54	1.514.753.53	2.202.460.614	461.697.799	40 09 22.01376	-111 56 58.56573	664.242.45	1.874.548.07
3159	7225.895.37	1.517.391.55	2.202.457.315	462.501.870	40 09 22.04395	-111 56 24.58739	664.232.29	1.877.187.76
15672	7228.508.25	1.522.678.35	2.203.253.720	464.113.290	40 09 48.11704	-111 55 16.65191	0.00	0.00

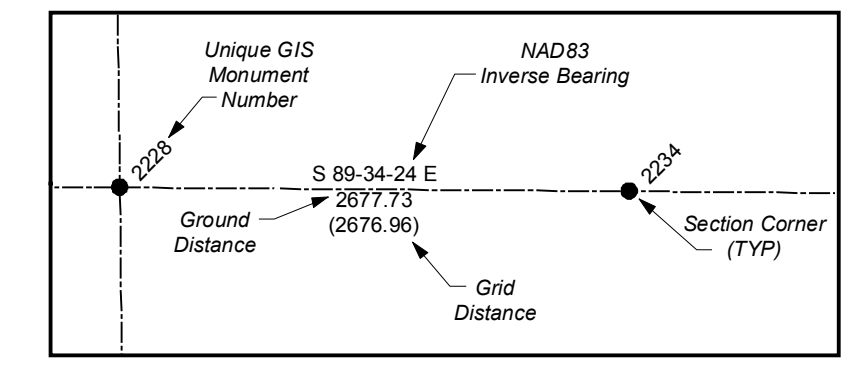


## State Plane Coordinate & Dependent Resurvey

SE 1/4 of Township 7 South, Range 1 West Salt Lake Base & Meridian



- LEGEND**
- <all other values>
  - Section Corner
  - 1/4 Corner
  - 1/16 Corner
  - 1/64 or 1/256 Corner
  - Meander Corner
  - ▲ Reference Corner
  - Witness Corner
  - ⊙ Amended Monument
  - ⊙ Angle Point
  - ⊗ Bench Mark
  - △ HARN
  - △ Triangulation Station
  - Camp Williams Military Boundary
  - County Boundary Monument
  - Fort Crittenden Military Reservation
  - Spanish Fork Indian Reservation
  - US Forest Service Boundary
  - Camp Williams Military Boundary
  - Fort Crittenden Military Reservation
  - US Forest Service Boundary
  - Indian Reservation Boundary
  - Township or Range Line
  - Quarter Section Line
  - Quarter/Quarter Section Line
  - Unsurveyed NAD83
  - Utah County Boundaries
  - Utah Lake Meander Line



ALL BEARINGS AND DISTANCES SHOWN ARE BASED ON THE UTAH COORDINATE SYSTEM, 1983 CENTRAL ZONE.

THE MONUMENT NUMBERS LISTED ARE A UNIQUE G.I.S. NUMBER ASSIGNED TO EACH SURVEYED MONUMENT.

THE NAD83 NORTHINGS & EASTINGS LISTED WERE TRANSFERRED FROM N.G.S. HARN CONTROL STATIONS.

THE LATITUDES & LONGITUDES LISTED WERE CALCULATED FROM THE NAD83 NORTHINGS & EASTINGS THAT WERE TRANSFERRED FROM N.G.S. HARN CONTROL STATIONS.

THE NAD27 NORTHINGS & EASTINGS LISTED WERE TRANSFERRED FROM UNITED STATES COAST AND GEODETIC SURVEY STATIONS; WILLIAMS, ELBERTA, AND LAKE MOUNTAIN No. 2.

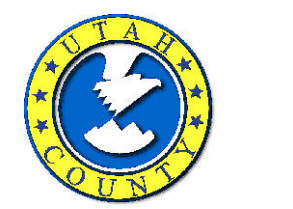
SECTION TIES, ORIGINAL GENERAL LAND OFFICE OR BUREAU OF LAND MANAGEMENT SURVEY NOTES, TRAVERSES CALCULATIONS, TIES TO TRAVERSE POINTS, GPS DATA, ETC. USED IN OBTAINING THIS INFORMATION ARE AVAILABLE IN THE UTAH COUNTY SURVEYOR'S OFFICE.

ALL SECTION CORNERS WERE ESTABLISHED AND VERIFIED PRIOR TO RESURVEY WORK ACCORDING TO THE RULES ESTABLISHED BY THE BUREAU OF LAND MANAGEMENT.

U.S. FOREST SERVICE BOUNDARY AS PER "STATUS AND ENCUMBRANCE MAPS" FURNISHED TO THE UTAH COUNTY SURVEY OFFICE IN THE YEAR 2000.

THE DATA SHOWN ON THIS PLAT WAS COMPILED FROM SURVEY DATA ACQUIRED USING HARN CONTROL POINTS PUBLISHED IN NAD83 STATE PLANE COORDINATES. THE GROUND DISTANCES SHOWN BETWEEN POINTS WERE CALCULATED BY APPLYING "COMBINED CONVERSION FACTORS" (COMMONLY CALLED GRID FACTORS) TO THE INVERSED DISTANCES BETWEEN THE STATE PLANE COORDINATES OF RESPECTIVE MONUMENT POINTS. BECAUSE GRID FACTORS ARE POTENTIALLY UNIQUE AT EACH POINT ON THE SURFACE OF THE EARTH, BASED ON LATITUDE AND ELEVATION, THE RESULTING ADJUSTMENTS FROM GRID TO GROUND WILL VARY FROM POINT TO POINT AROUND ANY GIVEN SECTION. THIS, A "PERFECT CLOSURE" AROUND A SECTION CAN NOT BE OBTAINED USING THE PUBLISHED GROUND DISTANCES.

UTAH COUNTY ASSUMES NO LIABILITY FOR DIRECT, INDIRECT, SPECIAL, OR CONSEQUENTIAL DAMAGES RESULTING FROM THE USE OR MISUSE OF THIS PLAT OR ANY INFORMATION CONTAINED HEREON.



Utah County  
Public Works Department  
Survey Division  
2855 South State Street  
Provo, Utah 84606  
(801) 851-8600

