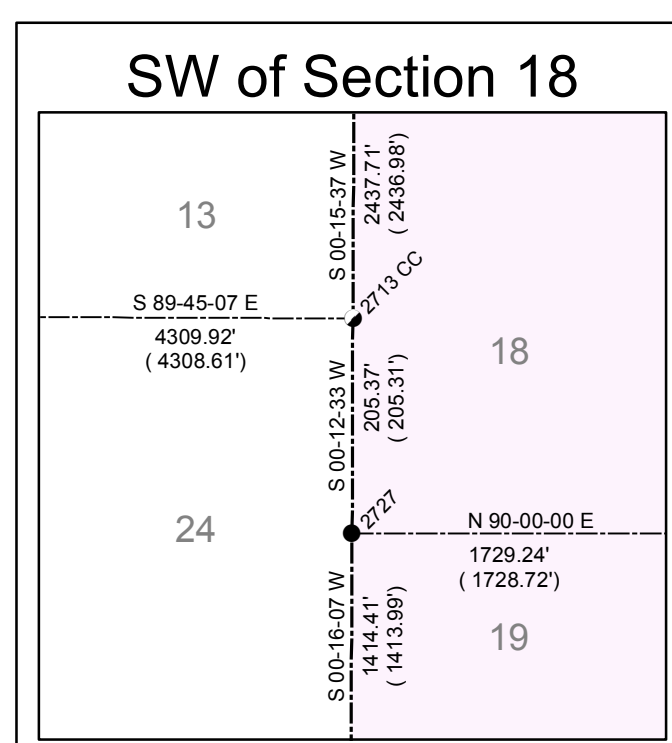
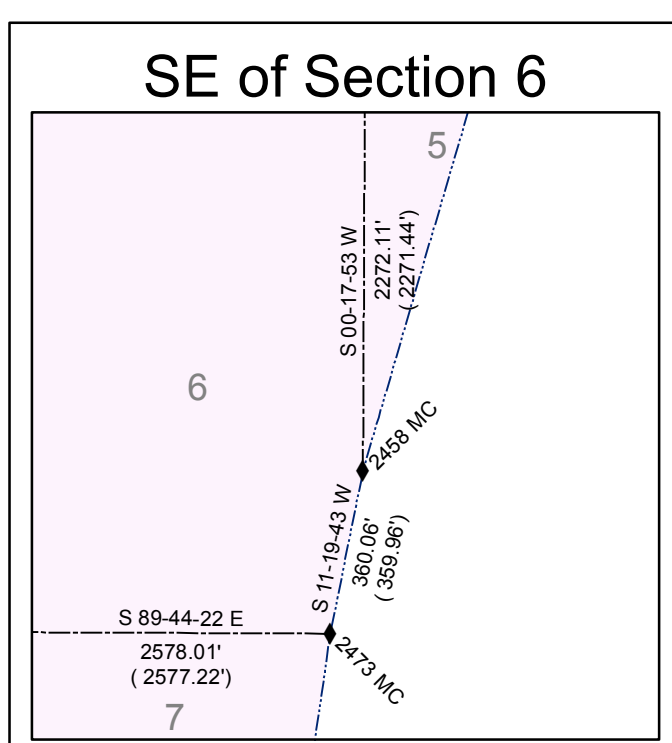
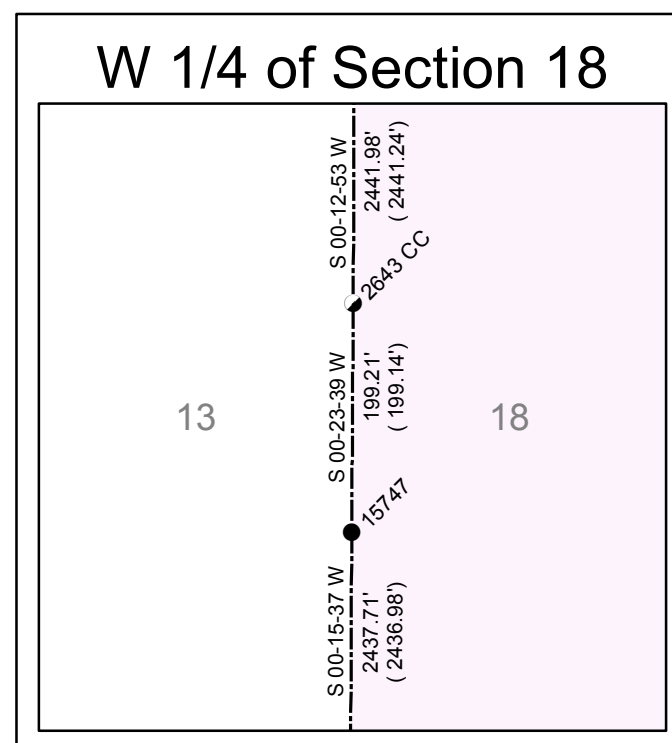
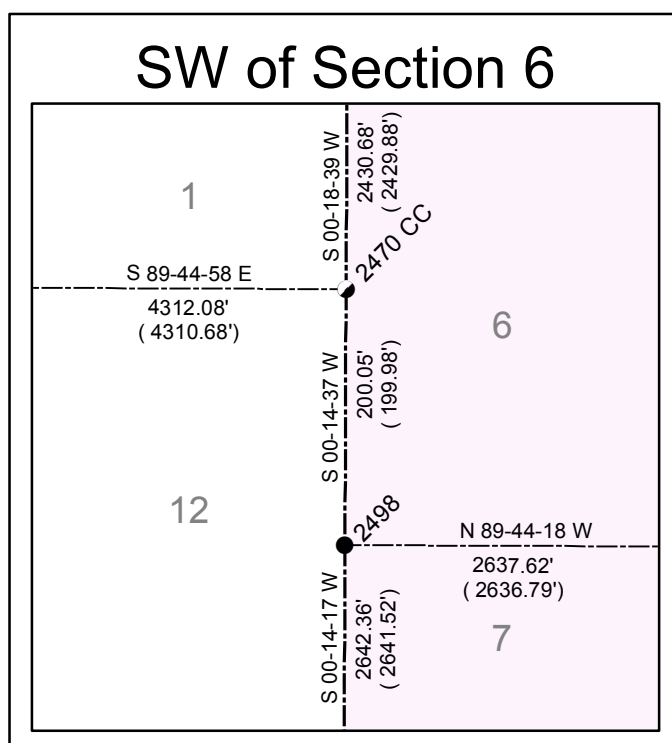
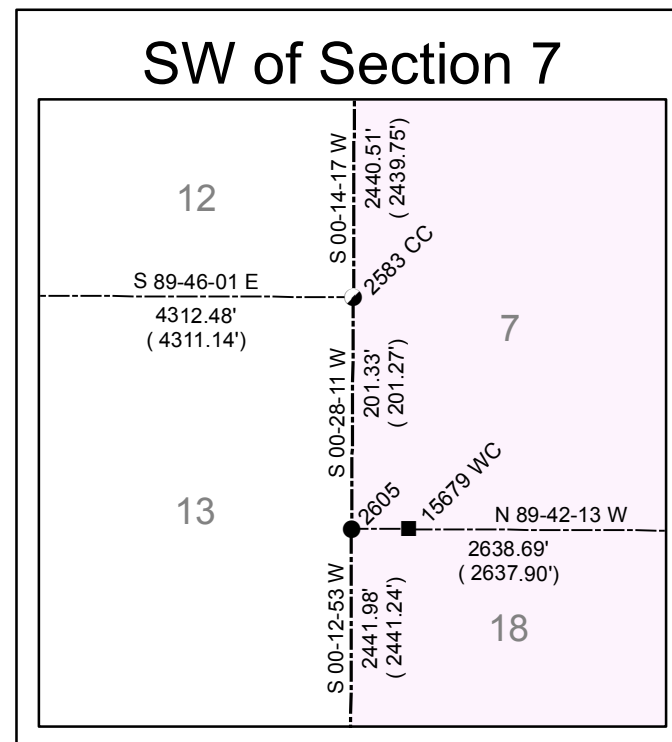
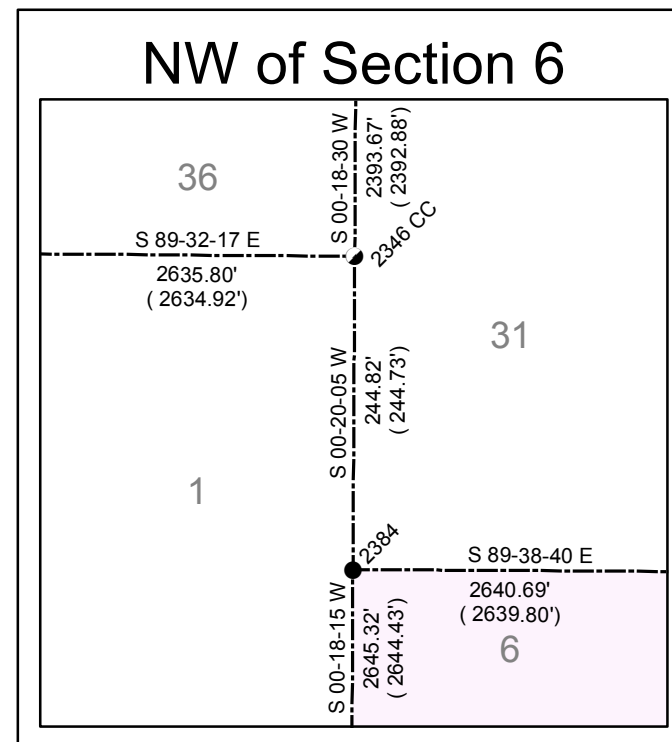
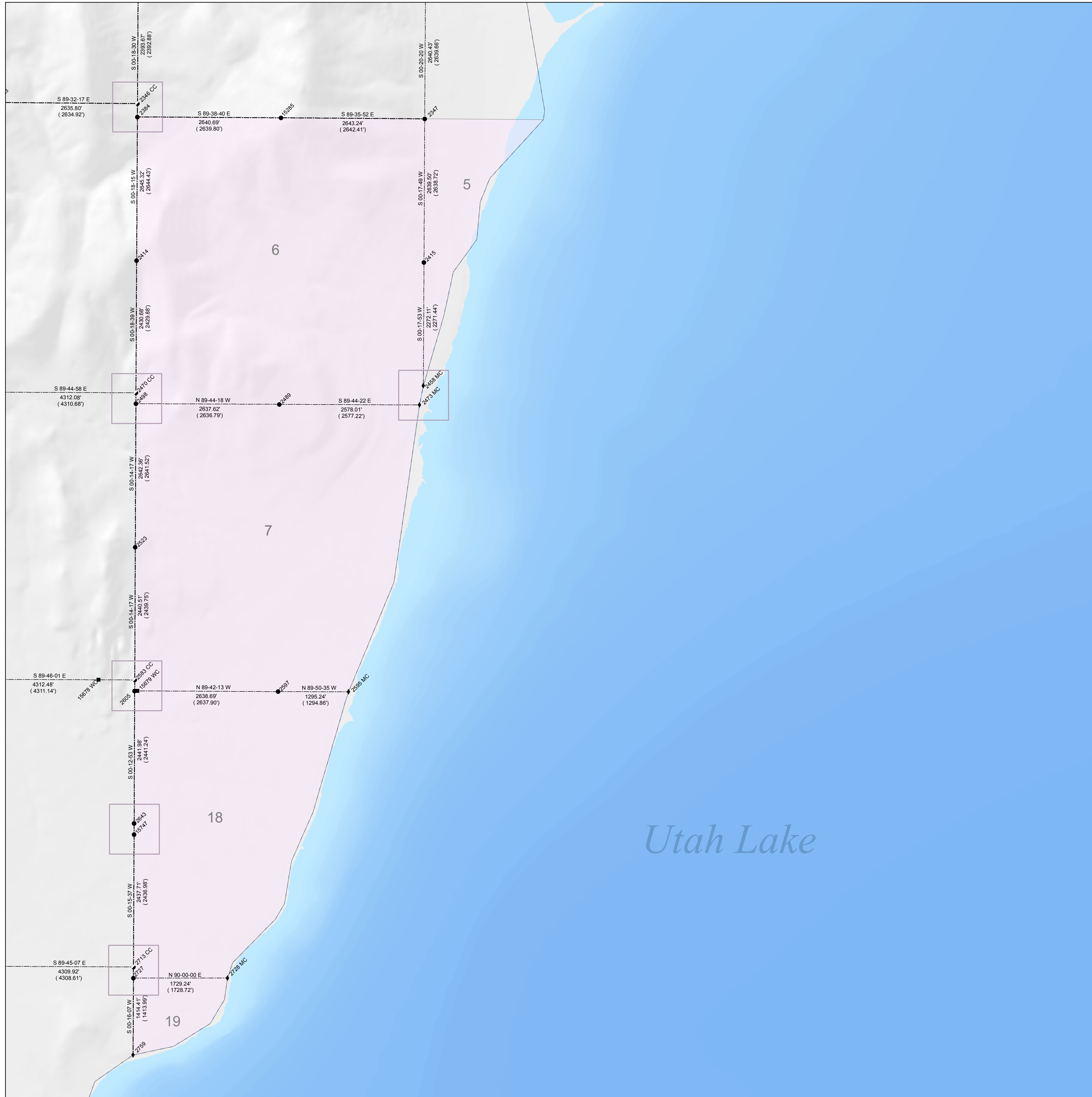


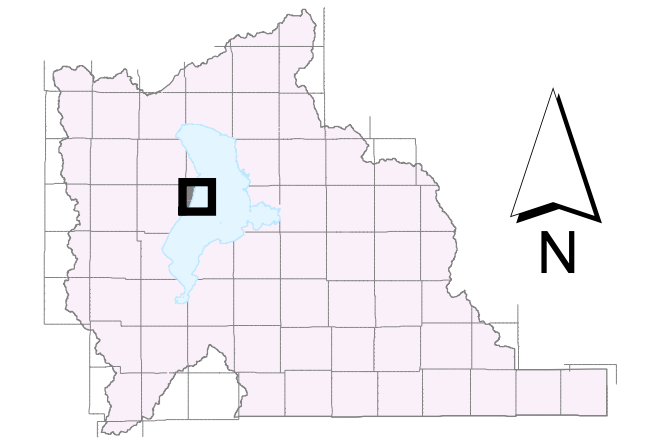
T 7 S, R 1 E

Monument Numbers	NAD 83 Northings US Survey Feet	NAD 83 Eastings US Survey Feet	NAD 83 Northings Meters	NAD 83 Eastings Meters	NAD 83 Latitudes	NAD 83 Longitudes	NAD 27 Northings	NAD 27 Eastings
2346	7,258,874.85	1,532,641.70	2,212,509.480	467,150.123	40 14 48.66502	-111 53 09.99887	0.00	0.00
2347	7,258,595.19	1,537,922.36	2,212,424.239	468,759.672	40 14 46.12100	-111 53 01.87892	0.00	0.00
2384	7,258,870.12	1,532,640.07	2,212,434.885	467,149.688	40 14 46.24636	-111 53 10.00365	0.00	0.00
2414	7,255,985.73	1,532,626.23	2,211,628.874	467,145.409	40 14 26.11237	-111 53 10.03748	0.00	0.00
2415	7,255,956.51	1,537,908.68	2,211,619.968	468,755.502	40 14 20.04345	-111 52 01.91566	0.00	0.00
2458	7,253,685.10	1,537,896.86	2,210,927.640	468,751.901	40 13 57.59548	-111 52 01.94776	0.00	0.00
2470	7,253,555.89	1,537,613.05	2,210,888.257	467,141.392	40 13 56.09865	-111 53 10.07216	0.00	0.00
2473	7,253,332.15	1,537,826.15	2,210,820.062	468,730.349	40 13 54.10458	-111 52 02.84080	0.00	0.00
2489	7,253,343.87	1,535,248.96	2,210,823.632	467,944.819	40 13 54.11438	-111 52 36.07235	0.00	0.00
2498	7,253,355.91	1,532,612.20	2,210,827.303	467,141.134	40 13 54.12229	-111 53 10.07194	0.00	0.00
2523	7,250,714.41	1,532,601.21	2,210,822.172	467,137.789	40 13 53.01686	-111 53 10.06841	0.00	0.00
2583	7,248,274.68	1,532,591.09	2,209,278.540	467,134.700	40 13 03.90541	-111 53 10.06138	0.00	0.00
2595	7,248,056.22	1,536,522.16	2,209,213.953	468,332.890	40 13 01.91109	-111 52 19.37186	0.00	0.00
2597	7,248,059.77	1,535,227.30	2,209,213.037	467,938.217	40 13 01.89268	-111 52 36.06470	0.00	0.00
2605	7,248,073.42	1,532,589.44	2,209,217.196	467,134.196	40 13 01.91636	-111 53 10.07140	0.00	0.00
2643	7,245,632.20	1,532,580.29	2,208,473.111	467,131.408	40 12 37.79021	-111 53 10.05346	0.00	0.00
2713	7,242,996.11	1,532,567.85	2,207,669.630	467,127.614	40 12 11.73805	-111 53 10.06722	0.00	0.00
2727	7,242,790.80	1,532,567.10	2,207,607.050	467,127.385	40 12 09.70896	-111 53 10.06548	0.00	0.00
2728	7,241,376.83	1,534,295.82	2,207,607.852	467,354.382	40 12 09.78431	-111 52 47.78431	0.00	0.00
2759	7,241,376.83	1,532,566.47	2,207,176.072	467,125.265	40 11 55.73484	-111 53 10.07232	0.00	0.00
15285	7,258,613.74	1,535,280.02	2,212,429.894	467,954.287	40 14 46.19577	-111 52 35.95797	0.00	0.00
15678	7,248,277.38	1,531,925.89	2,209,279.365	466,931.946	40 13 03.90369	-111 53 18.63695	0.00	0.00
15679	7,248,073.16	1,532,639.42	2,209,217.117	467,149.431	40 13 01.91593	-111 53 09.42702	0.00	0.00
15747	7,245,433.06	1,532,578.92	2,208,412.414	467,130.990	40 12 35.82215	-111 53 10.06005	0.00	0.00



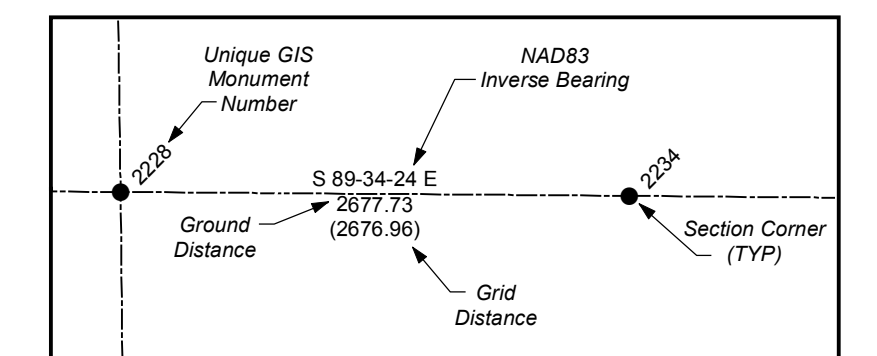
State Plane Coordinate & Dependent Resurvey

Township 7 South, Range 1 East
Salt Lake Base & Meridian



LEGEND

- <all other values>
- Section Corner
- 1/4 Corner
- 1/16 Corner
- 1/64 or 1/256 Corner
- Closing Corner
- ◆ Meander Corner
- ▲ Reference Corner
- ⊙ Amended Monument
- ⊙ Angle Point
- ⊗ Bench Mark
- △ HARN
- △ Triangulation Station
- Camp Williams Military Boundary
- County Boundary Monument
- Fort Crittenden Military Reservation
- Spanish Fork Indian Reservation
- US Forest Service Boundary
- Camp Williams Military Boundary
- Fort Crittenden Military Reservation
- US Forest Service Boundary
- Indian Reservation Boundary
- Township or Range Line
- Section Line
- Quarter Section Line
- Quarter/Quarter Section Line
- Unsurveyed NAD83
- Utah County Boundaries
- Utah Lake Meander Line



ALL BEARINGS AND DISTANCES SHOWN ARE BASED ON THE UTAH COORDINATE SYSTEM, 1983 CENTRAL ZONE.

THE MONUMENT NUMBERS LISTED ARE A UNIQUE G.I.S. NUMBER ASSIGNED TO EACH SURVEYED MONUMENT.

THE NAD83 NORTHINGS & EASTINGS LISTED WERE TRANSFERRED FROM N.G.S. HARN CONTROL STATIONS.

THE LATITUDES & LONGITUDES LISTED WERE CALCULATED FROM THE NAD83 NORTHINGS & EASTINGS THAT WERE TRANSFERRED FROM N.G.S. HARN CONTROL STATIONS.

THE NAD27 NORTHINGS & EASTINGS LISTED WERE TRANSFERRED FROM UNITED STATES COAST AND GEODETIC SURVEY STATIONS; WILLIAMS, ELBERTA, AND LAKE MOUNTAIN No. 2.

SECTION TIES, ORIGINAL GENERAL LAND OFFICE OR BUREAU OF LAND MANAGEMENT SURVEY NOTES, TRAVERSES CALCULATIONS, TIES TO TRAVERSE POINTS, GPS DATA, ETC. USED IN OBTAINING THIS INFORMATION ARE AVAILABLE IN THE UTAH COUNTY SURVEYORS OFFICE.

ALL SECTION CORNERS WERE ESTABLISHED AND VERIFIED PRIOR TO RESURVEY WORK ACCORDING TO THE RULES ESTABLISHED BY THE BUREAU OF LAND MANAGEMENT.

U.S. FOREST SERVICE BOUNDARY AS PER "STATUS AND ENCUMBRANCE MAPS" FURNISHED TO THE UTAH COUNTY SURVEY OFFICE IN THE YEAR 2000.

THE DATA SHOWN ON THIS PLAT WAS COMPILED FROM SURVEY DATA ACQUIRED USING HARN CONTROL POINTS PUBLISHED IN NAD83 STATE PLANE COORDINATES. THE GROUND DISTANCES SHOWN BETWEEN POINTS WERE CALCULATED BY APPLYING "COMBINED CONVERSION FACTORS" (COMMONLY CALLED GRID FACTORS) TO THE INVERSED DISTANCES BETWEEN THE STATE PLANE COORDINATES OF RESPECTIVE MONUMENT POINTS. BECAUSE GRID FACTORS ARE POTENTIALLY UNIQUE AT EACH POINT ON THE SURFACE OF THE EARTH, BASED ON LATITUDE AND ELEVATION, THE RESULTING ADJUSTMENTS FROM GRID TO GROUND WILL VARY FROM POINT TO POINT AROUND ANY GIVEN SECTION. THIS, A "PERFECT CLOSURE" AROUND A SECTION CAN NOT BE OBTAINED USING THE PUBLISHED GROUND DISTANCES.

UTAH COUNTY ASSUMES NO LIABILITY FOR DIRECT, INDIRECT, SPECIAL, OR CONSEQUENTIAL DAMAGES RESULTING FROM THE USE OR MISUSE OF THIS PLAT OR ANY INFORMATION CONTAINED HEREON.



Utah County
Public Works Department
Survey Division
2855 South State Street
Provo, Utah 84606
(801) 851-8600