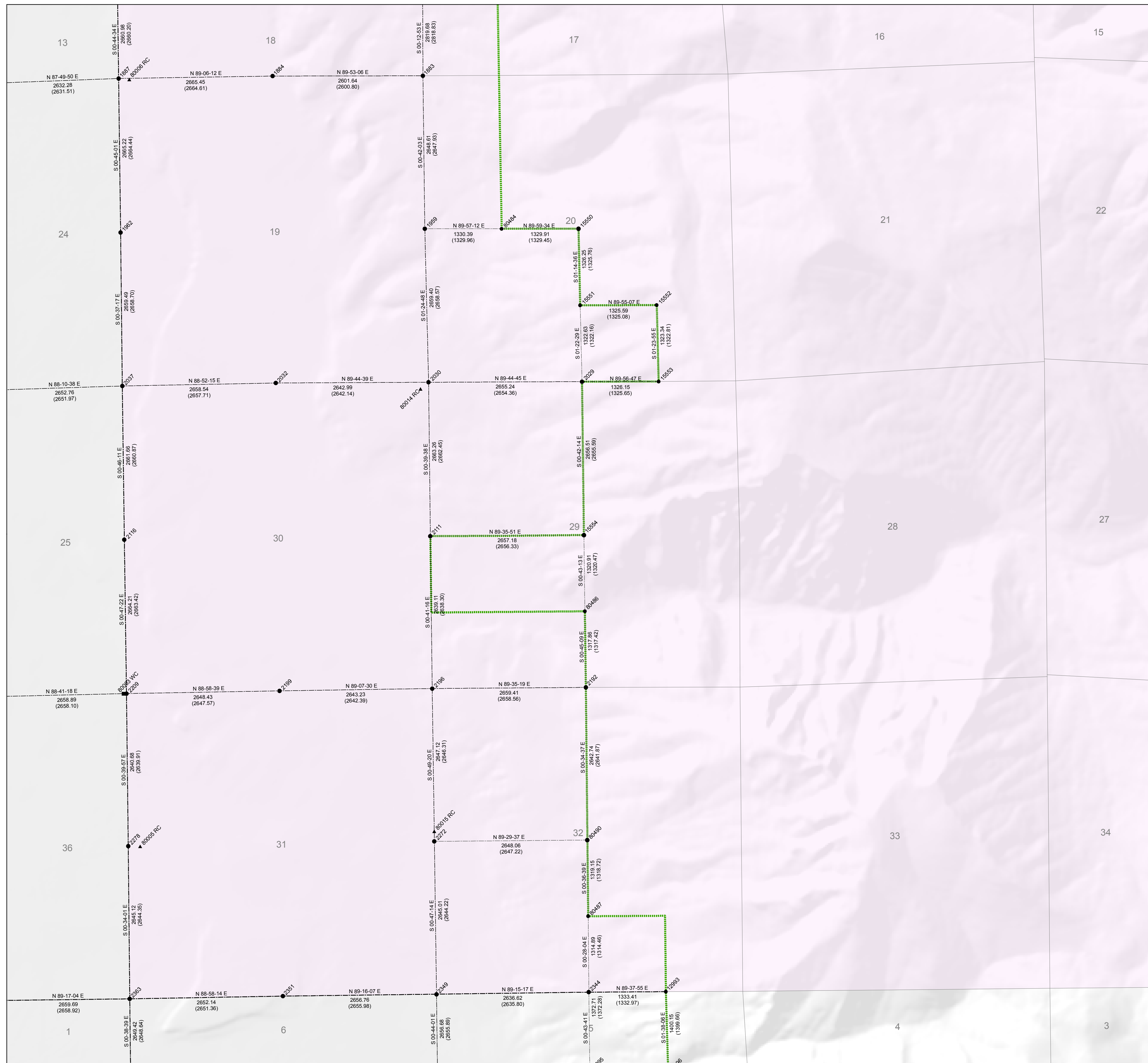


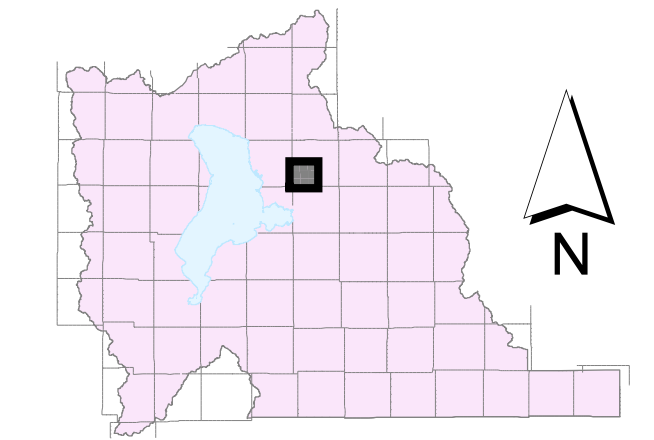
SW of T 6 S, R 3 E

GIS Monument Numbers	NAD 83 Northings US Survey Feet		NAD 83 Eastings US Survey Feet		NAD 27 Northings Meters		NAD 27 Eastings Meters	
	NAD 83 Northings US Survey Feet	NAD 83 Eastings US Survey Feet	NAD 27 Northings Meters	NAD 27 Eastings Meters	NAD 83 Northings US Survey Feet	NAD 83 Eastings US Survey Feet	NAD 27 Northings Meters	NAD 27 Eastings Meters
1883	7274.50609	1601.77742	2217.273890	488.221315	4017.2514542	-111.381870587	712.83862	1961.54827
1884	7274.50587	1599.17243	2217.272299	487.428791	4017.250269	-111.381226994	712.83378	1958.94688
1887	7274.45917	1596.50835	2217.259591	486.616217	4017.2459973	-111.392645247	712.79177	1956.30320
1959	7271.85836	1601.80581	2216.466862	488.231386	4016.5879770	-111.381823505	710.19078	1961.59985
1962	7271.79496	1596.54324	2216.447536	486.627333	4016.5826713	-111.392614169	710.12752	1956.33786
2029	7269.21238	1604.52571	2215.660366	489.060415	4016.3287079	-111.374308830	707.54485	1964.31968
2030	7269.20660	1601.87138	2215.650773	488.251372	4016.3271517	-111.381733596	707.53309	1961.64531
2032	7269.18880	1599.22937	2215.653177	487.446055	4016.3255687	-111.381543585	707.51093	1959.93332
2037	7269.13642	1596.57028	2215.637211	486.636144	4016.3199446	-111.392570925	707.46895	1956.36633
2111	7266.53833	1601.90208	2214.845313	488.260730	4016.0640560	-111.381686682	704.87055	1961.69602
2116	7266.47579	1596.60782	2214.826250	486.647037	4016.0570123	-111.392518788	704.80847	1956.40193
2192	7263.91931	1604.59224	2214.047033	489.080692	4015.4034243	-111.374213193	702.25139	1964.38601
2196	7263.90022	1601.93135	2214.041216	488.270383	4015.4033472	-111.381642576	702.23244	1961.23733
2199	7263.85967	1599.29167	2214.028915	487.465077	4015.3989424	-111.385050734	702.19223	1959.08542
2209	7263.81262	1596.64452	2214.014516	486.658233	4015.3938289	-111.392445416	702.14529	1956.43834
2272	7261.25418	1601.97172	2213.234701	488.281957	4015.1418547	-111.381588336	699.58586	1961.76470
2278	7261.17289	1596.67520	2213.209924	486.667375	4015.1329596	-111.392419870	699.50546	1956.46874
2344	7258.44450	1604.64483	2212.439389	489.096358	4014.4843419	-111.381737141	696.97536	1964.43621
2349	7258.41621	1603.08085	2212.428816	488.293020	4014.4805657	-111.381536231	696.94192	1961.80189
2351	7258.57631	1599.35229	2212.418484	487.483554	4014.4767980	-111.384946135	696.90828	1959.14537
2363	7258.52867	1596.70136	2212.403964	486.675549	4014.4716453	-111.392380154	696.86115	1956.49462
12993	7258.65306	1605.97657	2212.441879	489.502637	4014.4853733	-111.372418049	696.98419	1965.76898
15550	7271.85961	1604.46522	2216.467242	489.041976	4016.5901328	-111.374319186	710.19205	1964.25922
15551	7270.53416	1604.49339	2216.463244	489.050747	4016.4593286	-111.374322211	708.86662	1964.38798
15552	7270.53404	1605.81907	2216.063818	489.154430	4016.4546998	-111.372642431	708.86650	1965.61305
15553	7269.21362	1605.85136	2215.660743	489.464474	4016.3290150	-111.372598395	707.54608	1965.64534
15554	7266.55699	1604.55834	2214.851001	489.070359	4016.0662913	-111.374261813	704.88934	1964.35229
80003	7263.81152	1596.59455	2214.014178	486.642992	4015.3937107	-111.392529674	702.14415	1956.38834
80005	7261.16607	1596.88174	2213.207845	486.673529	4015.1323212	-111.392153448	699.49868	1956.67535
80006	7274.44036	1596.69232	2217.254010	486.672793	4017.2441797	-111.392427779	712.77341	1956.48717
80014	7269.08764	1601.73137	2215.622344	488.208698	4016.3159674	-111.381914015	707.41998	1961.52536
80015	7261.42923	1601.97018	2213.288055	488.281487	4015.15191536	-111.381590672	699.76079	1961.76224
80484	7271.85944	1603.13577	2216.467191	488.636759	4016.5910355	-111.380107326	710.19188	1962.92979
80486	7265.23662	1604.57494	2214.448350	489.075420	4015.5338064	-111.374237945	703.56893	1964.36880
80487	7259.58582	1604.63290	2212.839986	489.093086	4015.0134002	-111.374153416	698.29016	1964.42524
80489	7261.27257	1604.61894	2213.241831	489.088801	4015.1445555	-111.374173987	699.60918	1964.41195



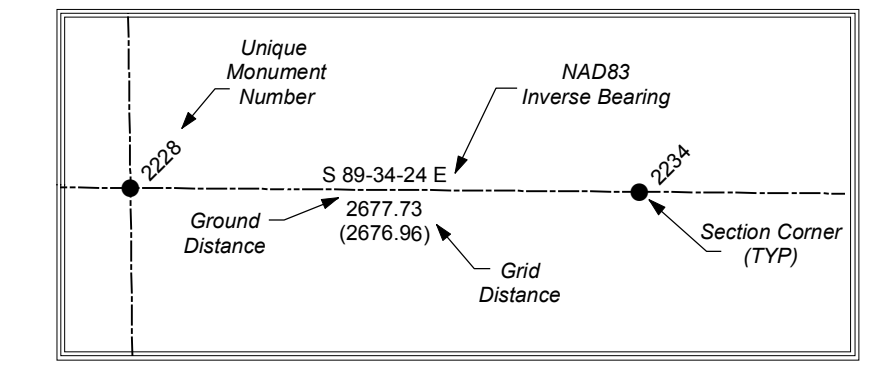
State Plane Coordinate & Dependent Resurvey

SW 1/4 of Township 6 South, Range 3 East Salt Lake Base & Meridian



LEGEND

- Center Section Corner
- Section Corner
- 1/4 Corner
- 1/16 Corner
- 1/64 or 1/256 Corner
- ▲ Closing Corner
- ▲ Reference Corner
- Witness Corner
- Angle Point
- ⊠ Traverse Point
- × Bench Mark
- △ HARN
- △ Triangulation Station
- Camp Williams Military Boundary
- County Boundary Monument
- Fort Crittenden Military Reservation
- Spanish Fork Indian Reservation
- US Forest Service Boundary
- Township or Range Line
- Section Line
- Quarter Section Line
- Quarter/Quarter Section Line
- Camp Williams Military Boundary
- Fort Crittenden Military Reservation
- US Forest Service Boundary
- Indian Reservation Boundary
- Unsurveyed NAD83
- Utah County Boundaries
- Utah Lake Meander Line



ALL BEARINGS AND DISTANCES SHOWN ARE BASED ON THE UTAH COORDINATE SYSTEM, 1983 CENTRAL ZONE.

THE MONUMENT NUMBERS LISTED ARE A UNIQUE G.I.S. NUMBER ASSIGNED TO EACH SURVEYED MONUMENT.

THE NAD83 NORTHINGS & EASTINGS LISTED WERE TRANSFERRED FROM N.G.S. HARN CONTROL STATIONS.

THE LATITUDES & LONGITUDES LISTED WERE CALCULATED FROM THE NAD83 NORTHINGS & EASTINGS THAT WERE TRANSFERRED FROM N.G.S. HARN CONTROL STATIONS.

THE NAD27 NORTHINGS & EASTINGS LISTED WERE TRANSFERRED FROM UNITED STATES COAST AND GEODETIC SURVEY STATIONS; WILLIAMS, ELBERTA, AND LAKE MOUNTAIN No. 2.

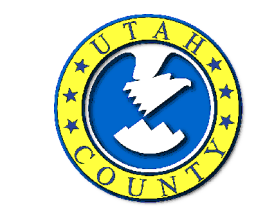
SECTION TIES, ORIGINAL GENERAL LAND OFFICE OR BUREAU OF LAND MANAGEMENT SURVEY NOTES, TRAVERSES, CALCULATIONS, TIES TO TRAVERSE POINTS, GPS DATA, ETC. USED IN OBTAINING THIS INFORMATION ARE AVAILABLE IN THE UTAH COUNTY SURVEYOR'S OFFICE.

ALL SECTION CORNERS WERE ESTABLISHED AND VERIFIED PRIOR TO RESURVEY WORK ACCORDING TO THE RULES ESTABLISHED BY THE BUREAU OF LAND MANAGEMENT.

U.S. FOREST SERVICE BOUNDARY AS PER "STATUS AND ENCUMBRANCE MAPS" FURNISHED TO THE UTAH COUNTY SURVEY OFFICE IN THE YEAR 2000.

THE DATA SHOWN ON THIS PLAT WAS COMPILED FROM SURVEY DATA ACQUIRED USING HARN CONTROL POINTS PUBLISHED IN NAD83 STATE PLANE COORDINATES. THE GROUND DISTANCES SHOWN BETWEEN POINTS WERE CALCULATED BY APPLYING "COMBINED CONVERSION FACTORS" (COMMONLY CALLED GRID FACTORS) TO THE INVERSED DISTANCES BETWEEN THE STATE PLANE COORDINATES OF RESPECTIVE MONUMENT POINTS. BECAUSE GRID FACTORS ARE POTENTIALLY UNIQUE AT EACH POINT ON THE SURFACE OF THE EARTH BASED ON LATITUDE AND ELEVATION, THE RESULTING ADJUSTMENTS FROM GRID TO GROUND WILL VARY FROM POINT TO POINT UNDER ANY GIVEN SECTION. THUS, A "PERFECT CLOSURE" AROUND A SECTION CAN NOT BE OBTAINED USING THE PUBLISHED GROUND DISTANCES.

UTAH COUNTY ASSUMES NO LIABILITY FOR DIRECT, INDIRECT, SPECIAL, OR CONSEQUENTIAL DAMAGES RESULTING FROM THE USE OR MISUSE OF THIS PLAT OR ANY INFORMATION CONTAINED HEREON.



Utah County
Public Works Department
Survey Division
2855 South State Street
Provo, Utah 84606
(801) 851-8600