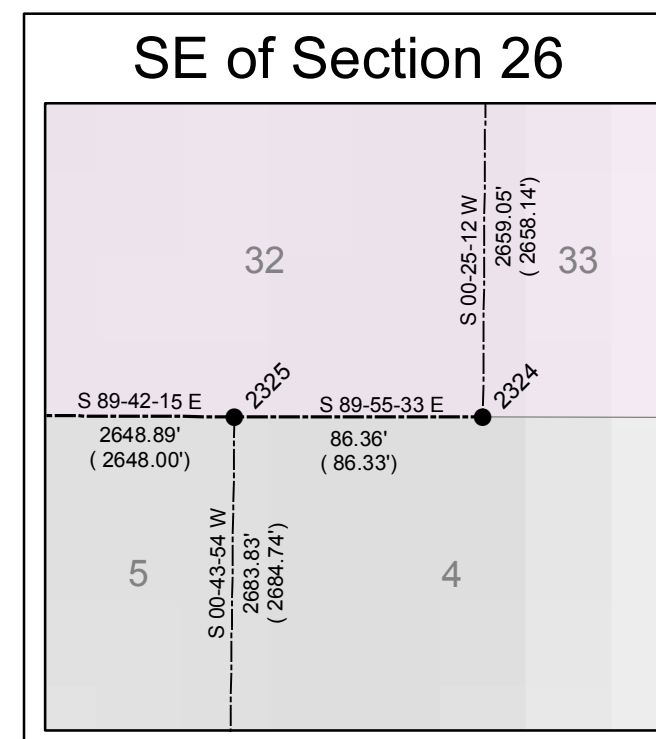
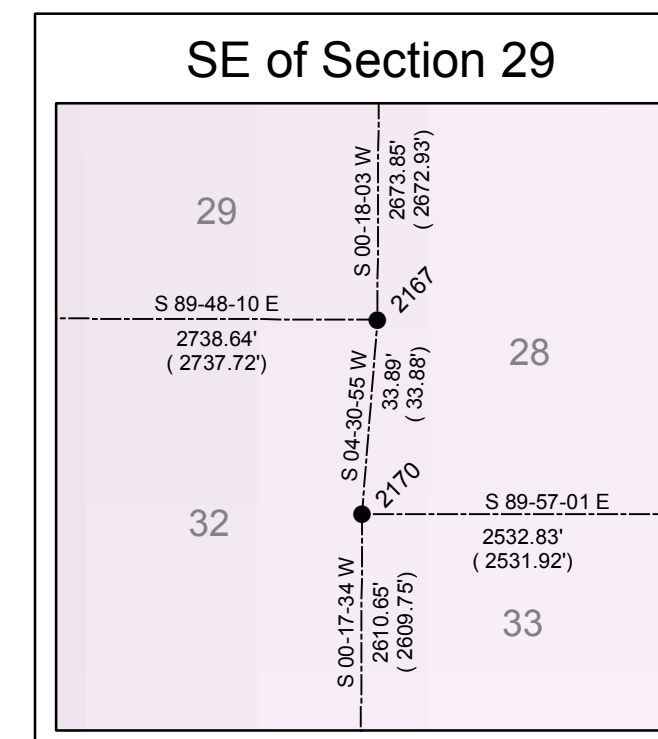
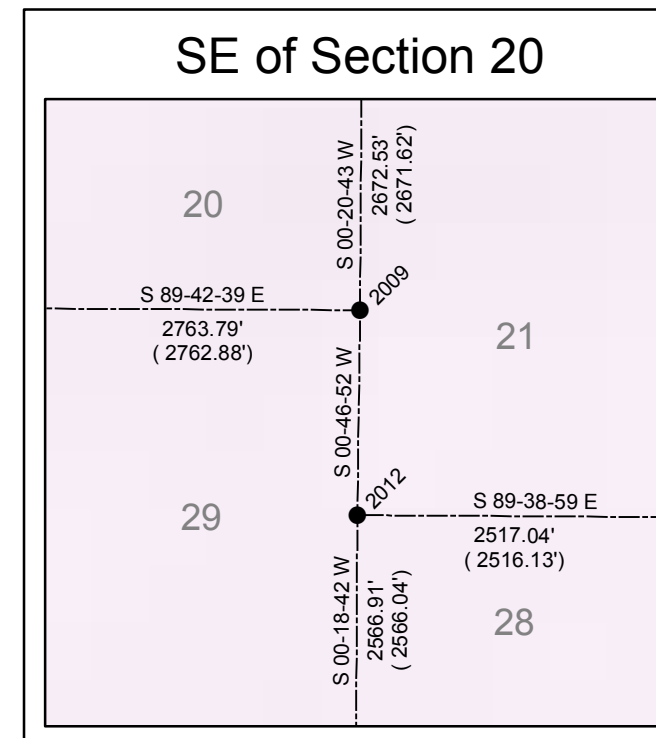
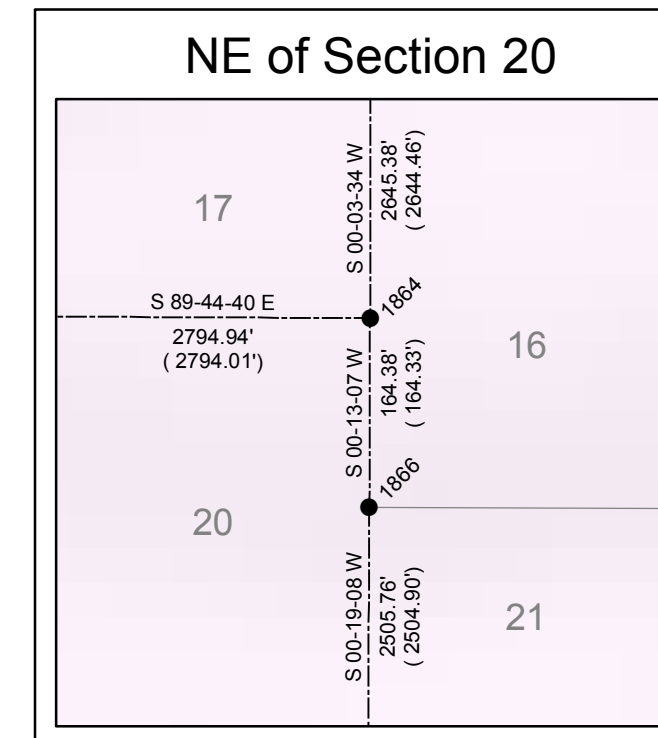
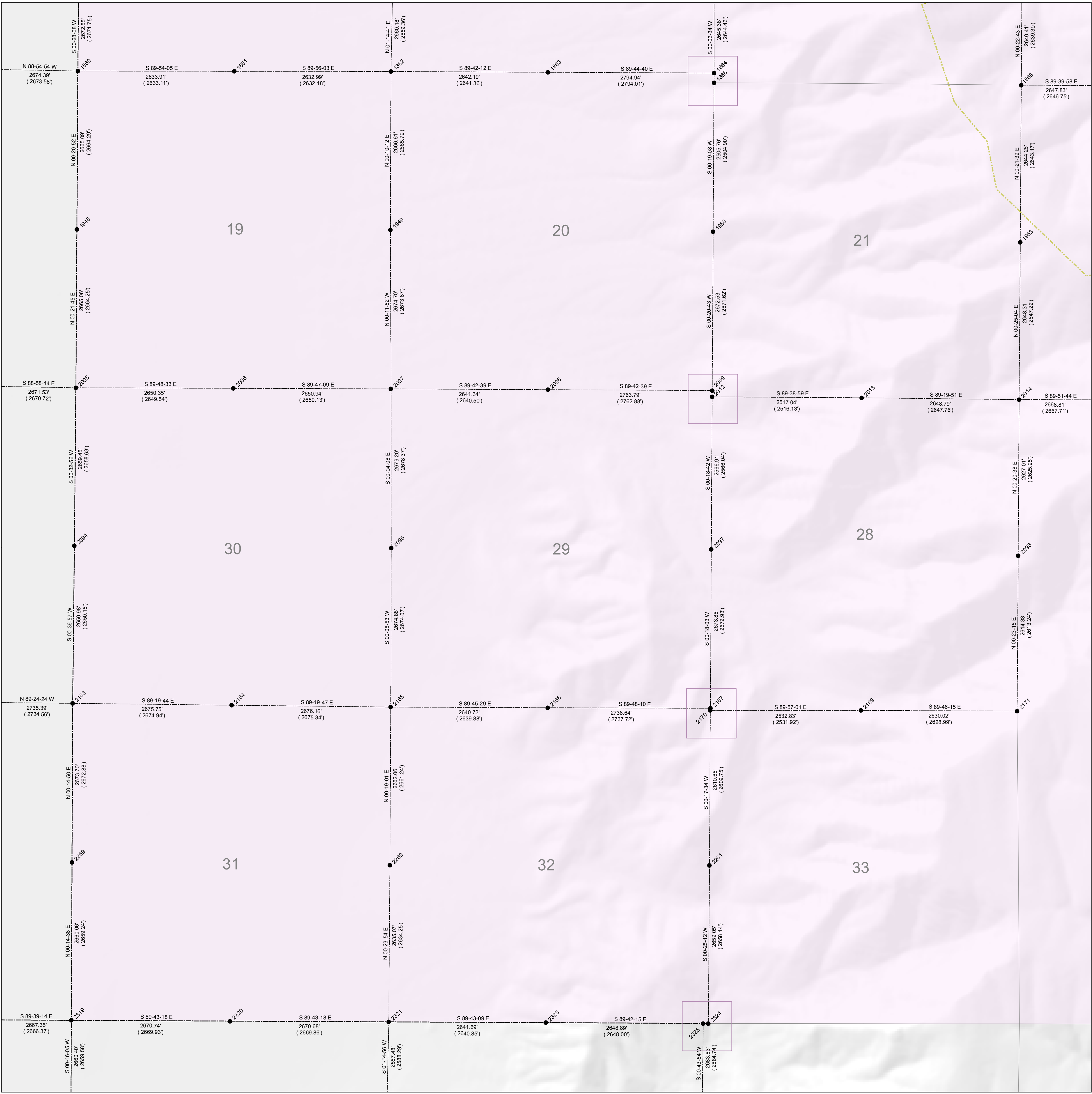


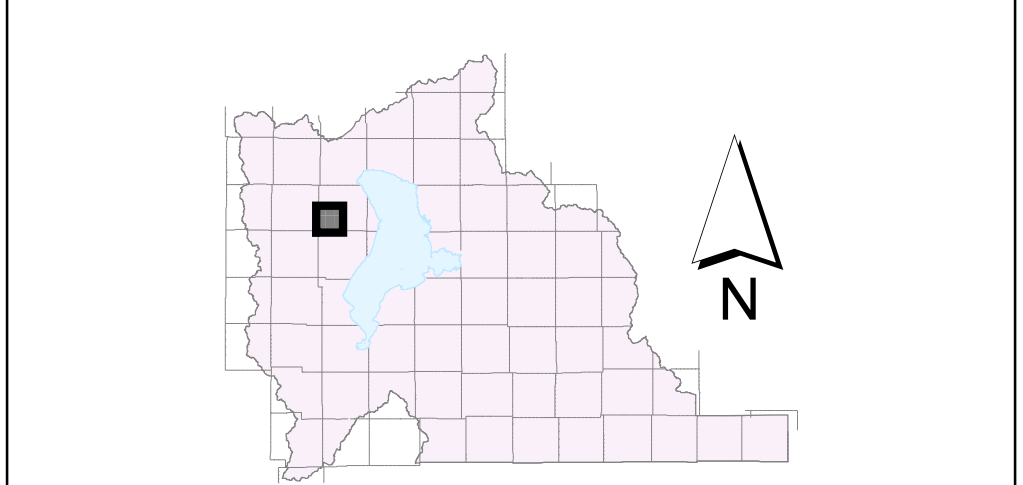
SW 1/4 of T 6 S, R 1 W

G.I.S. Monument Number	NAD83 Northings US Survey Feet	NAD83 Eastings US Survey Feet	NAD83 Northings Meters	NAD83 Eastings Meters	NAD83 Latitude	NAD83 Longitude	NAD27 Northings	NAD27 Eastings
1860	7,275,015.05	1,499,364.14	2,217,429.023	457,007.104	40 17 26.53078	-112 00 20.35598	713,352.61	1,859,159.48
1861	7,275,010.52	1,501,997.25	2,217,427.641	457,809.676	40 17 26.63170	-111 59 46.37477		
1862	7,275,007.49	1,504,629.43	2,217,426.719	458,611.966	40 17 26.74475	-111 59 12.40559		
1863	7,274,993.82	1,507,270.75	2,217,422.562	459,417.044	40 17 26.75032	-111 58 38.31759		
1864	7,274,981.36	1,510,064.73	2,217,418.752	460,268.651	40 17 26.77292	-111 58 02.25964		
1866	7,274,917.03	1,510,064.11	2,217,368.666	460,268.460	40 17 25.74897	-111 58 02.25964		
1868	7,274,777.74	1,515,232.23	2,217,368.661	461,943.707	40 17 25.02226	-111 56 55.65636		
1948	7,272,350.81	1,499,347.97	2,216,616.960	457,002.175	40 17 00.20079	-112 00 20.37029	710,688.26	1,859,143.59
1949	7,272,341.72	1,504,621.52	2,216,614.188	458,609.555	40 17 00.40004	-111 59 12.32045		
1950	7,272,312.17	1,510,059.16	2,216,605.184	460,264.209	40 17 00.39423	-111 58 02.26774		
1953	7,272,134.63	1,515,215.58	2,216,551.067	461,838.632	40 16 58.90103	-111 56 55.60209		
2005	7,269,686.61	1,499,331.11	2,215,804.909	456,997.037	40 16 33.87110	-112 00 20.39345	708,023.95	1,859,127.01
2006	7,269,677.78	1,501,980.64	2,215,802.218	457,804.614	40 16 33.93049	-111 59 46.20733		
2007	7,269,667.87	1,504,630.75	2,215,799.197	458,612.370	40 16 33.97643	-111 59 12.01354		
2008	7,269,654.55	1,507,271.22	2,215,795.139	459,417.186	40 16 33.95466	-111 58 37.94395		
2009	7,269,640.60	1,510,034.06	2,215,790.887	460,259.303	40 16 33.99177	-111 58 02.25633		
2012	7,269,633.77	1,510,032.61	2,215,788.325	460,258.859	40 16 32.93594	-111 58 02.30692		
2013	7,269,618.39	1,512,548.69	2,215,793.638	461,025.763	40 16 32.91264	-111 57 29.84219		
2014	7,269,487.48	1,515,196.27	2,215,744.214	461,832.748	40 16 32.73976	-111 56 55.67979		
2094	7,267,028.09	1,499,305.64	2,214,984.583	456,989.274	40 16 07.89712	-112 00 20.52913	705,365.38	1,859,102.11
2095	7,266,989.50	1,504,633.97	2,214,982.831	458,613.351	40 16 07.50786	-111 59 11.78400		
2097	7,266,967.77	1,510,018.55	2,214,976.207	460,254.606	40 16 07.57686	-111 58 02.31398		
2098	7,266,961.58	1,515,189.52	2,214,943.838	461,827.945	40 16 06.76861	-111 56 55.71310		
2163	7,264,378.07	1,499,277.15	2,214,186.863	456,980.590	40 15 41.46376	-112 00 20.70238	702,714.77	1,859,074.32
2164	7,264,346.74	1,501,951.90	2,214,177.315	457,795.856	40 15 41.24524	-111 59 46.19650		
2165	7,264,315.45	1,504,627.06	2,214,167.777	458,611.246	40 15 41.08123	-111 59 11.68543		
2166	7,264,304.31	1,507,269.92	2,214,164.381	459,415.975	40 15 41.11166	-111 58 37.83121		
2167	7,264,294.88	1,510,004.62	2,214,161.509	460,259.329	40 15 41.16138	-111 58 02.31485		
2169	7,264,258.91	1,512,533.87	2,214,150.544	461,021.247	40 15 40.93519	-111 57 29.68569		
2170	7,264,261.11	1,510,001.95	2,214,151.214	460,249.516	40 15 40.82745	-111 58 02.34698		
2171	7,264,248.39	1,515,162.84	2,214,147.338	461,822.558	40 15 40.96299	-111 56 55.77194		
2259	7,251,705.21	1,499,265.62	2,213,372.175	456,977.076	40 15 14.99169	-112 00 20.65614	700,042.19	1,859,062.87
2260	7,251,654.25	1,504,612.34	2,213,356.641	458,606.758	40 15 14.78114	-111 59 11.68661		
2261	7,251,651.39	1,509,988.62	2,213,355.770	460,245.451	40 15 15.03622	-111 58 02.34313		
2319	7,259,045.99	1,499,254.30	2,212,561.644	456,973.624	40 14 48.71136	-112 00 20.60829	697,382.42	1,859,051.57
2320	7,259,033.02	1,501,924.19	2,212,557.690	457,787.410	40 14 48.73093	-111 59 46.17372		
2321	7,259,020.06	1,504,594.02	2,212,553.738	458,601.175	40 14 48.74775	-111 59 11.74903		
2323	7,259,007.11	1,507,234.84	2,212,549.791	459,406.099	40 14 48.76037	-111 58 37.68043		
2324	7,258,993.32	1,509,969.14	2,212,545.590	460,239.513	40 14 48.76683	-111 58 02.41527		
2325	7,258,993.43	1,509,982.81	2,212,545.624	460,213.200	40 14 48.76348	-111 58 03.52866		

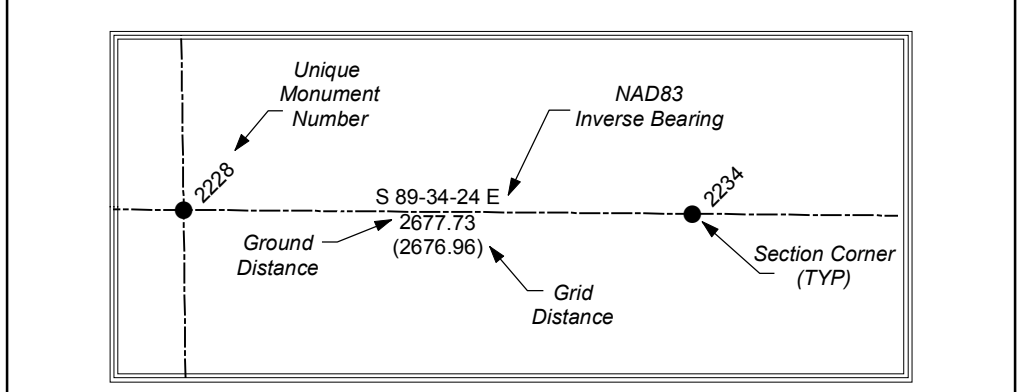


State Plane Coordinate & Dependent Resurvey

SW 1/4 of Township 6 South, Range 1 West Salt Lake Base & Meridian



- LEGEND**
- Section Corner
 - 1/4 Corner
 - 1/16 Corner
 - 1/64 or 1/256 Corner
 - ◆ Closing Corner
 - ◆ Meander Corner
 - ▲ Reference Corner
 - Witness Corner
 - ⊙ Angle Point
 - ⊙ Traverse Point
 - ⊙ Bench Mark
 - △ HARN
 - △ Triangulation Station
 - Camp Williams Military Boundary
 - County Boundary Monument
 - Fort Crittenden Military Reservation
 - Spanish Fork Indian Reservation
 - US Forest Service Boundary
 - ◆ Camp Williams Military Boundary
 - ◆ Fort Crittenden Military Reservation
 - ◆ US Forest Service Boundary
 - ◆ Indian Reservation Boundary
 - ◆ Township or Range Line
 - ◆ Section Line
 - ◆ Quarter Section Line
 - ◆ Quarter/Quarter Section Line
 - ◆ Unsurveyed NAD83
 - ◆ Utah County Boundaries
 - ◆ Utah Lake Meander Line



ALL BEARINGS AND DISTANCES SHOWN ARE BASED ON THE UTAH COORDINATE SYSTEM, 1983 CENTRAL ZONE.

THE MONUMENT NUMBERS LISTED ARE A UNIQUE G.I.S. NUMBER ASSIGNED TO EACH SURVEYED MONUMENT.

THE NAD83 NORTHINGS & EASTINGS LISTED WERE TRANSFERRED FROM N.G.S. HARN CONTROL STATIONS.

THE LATITUDES & LONGITUDES LISTED WERE CALCULATED FROM THE NAD83 NORTHINGS & EASTINGS THAT WERE TRANSFERRED FROM N.G.S. HARN CONTROL STATIONS.

THE NAD27 NORTHINGS & EASTINGS LISTED WERE TRANSFERRED FROM UNITED STATES COAST AND GEODETIC SURVEY STATIONS; WILLIAMS, ELBERTA, AND LAKE MOUNTAIN No. 2.

SECTION TIES, ORIGINAL GENERAL LAND OFFICE OR BUREAU OF LAND MANAGEMENT SURVEY NOTES, TRAVERSES, CALCULATIONS, TIES TO TRAVERSE POINTS, GPS DATA, ETC. USED IN OBTAINING THIS INFORMATION ARE AVAILABLE IN THE UTAH COUNTY SURVEYOR'S OFFICE.

ALL SECTION CORNERS WERE ESTABLISHED AND VERIFIED PRIOR TO RESURVEY WORK ACCORDING TO THE RULES ESTABLISHED BY THE BUREAU OF LAND MANAGEMENT.

U.S. FOREST SERVICE BOUNDARY AS PER "STATUS AND ENCUMBRANCE MAPS" FURNISHED TO THE UTAH COUNTY SURVEY OFFICE IN THE YEAR 2000.

THE DATA SHOWN ON THIS PLAN WAS COMPILED FROM SURVEY DATA ACQUIRED USING HARN CONTROL POINTS PUBLISHED IN NAD83 STATE PLANE COORDINATES. THE GROUND DISTANCES SHOWN BETWEEN POINTS WERE CALCULATED BY APPLYING "COMBINED CONVERSION FACTORS" (COMMONLY CALLED GRID FACTORS) TO THE INVERSE DISTANCES BETWEEN THE STATE PLANE COORDINATES OF RESPECTIVE MONUMENT POINTS. BECAUSE GRID FACTORS ARE POTENTIALLY UNIQUE AT EACH POINT ON THE SURFACE OF THE EARTH, BASED ON LATITUDE AND ELEVATION, THE RESULTING ADJUSTMENTS FROM GRID TO GROUND WILL VARY FROM POINT TO POINT AROUND ANY GIVEN SECTION. THIS, A "PERFECT CLOSURE" AROUND A SECTION CAN NOT BE OBTAINED USING THE PUBLISHED GROUND DISTANCES.

UTAH COUNTY ASSUMES NO LIABILITY FOR DIRECT, INDIRECT, SPECIAL, OR CONSEQUENTIAL DAMAGES RESULTING FROM THE USE OR MISUSE OF THIS PLAN OR ANY INFORMATION CONTAINED HEREON.

