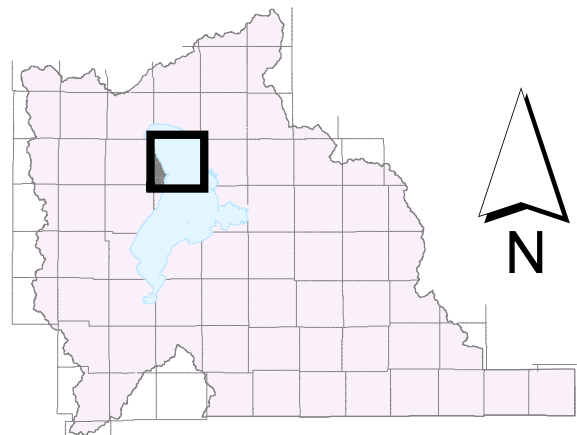


T 6 S, R 1 E

G.I.S. Monument Number	NAD83 Northings US Survey Feet	NAD83 Eastings US Survey Feet	NAD83 Northings Meters	NAD83 Eastings Meters	NAD 83 Latitudes	NAD83 Longitudes	NAD27 Northings	NAD27 Eastings
1637	7,284,937.50	1,531,676.33	2,220,453.391	466,855.878	40 19 06.18679	-111 53 23.91485		
1663	7,283,168.55	1,532,755.80	2,219,914.215	467,184.902	40 18 48.75170	-111 53 09.87968		
1683	7,282,346.05	1,532,753.54	2,219,663.516	467,184.212	40 18 40.62334	-111 53 09.86308		
1758	7,279,673.22	1,532,743.11	2,218,848.354	467,181.033	40 18 14.26889	-111 53 09.84878		
1817	7,277,047.39	1,532,730.20	2,218,048.482	467,177.100	40 17 48.25890	-111 53 09.86904		
1892	7,274,424.62	1,532,716.97	2,217,249.059	467,173.067	40 17 22.33895	-111 53 09.89370		
1961	7,271,791.61	1,532,705.16	2,216,446.516	467,169.467	40 16 56.31785	-111 53 09.89945		
2034	7,269,160.05	1,537,975.56	2,216,644.414	468,775.889	40 16 30.53079	-111 52 01.75205		
2035	7,269,158.96	1,539,524.47	2,215,644.053	469,247.997	40 16 30.58144	-111 51 41.76734		
2036	7,269,163.12	1,532,694.93	2,215,645.350	467,166.348	40 16 30.34140	-111 53 09.88509		
2112	7,266,532.02	1,532,681.39	2,214,843.390	467,162.221	40 16 04.33901	-111 53 09.91325		
2193	7,263,904.11	1,532,668.64	2,214,042.401	467,158.336	40 15 38.36808	-111 53 09.93134		
2195	7,263,874.10	1,537,952.29	2,214,033.254	468,768.795	40 15 38.29137	-111 52 01.77238		
2346	7,258,874.85	1,532,641.70	2,212,509.480	467,150.123	40 14 48.66502	-111 53 09.99887		
2347	7,258,595.19	1,537,922.36	2,212,424.239	468,759.672	40 14 46.12100	-111 52 01.87892		
2384	7,258,630.12	1,532,640.27	2,212,434.985	467,149.688	40 14 46.24636	-111 53 10.00365		
12817	7,274,413.92	1,535,358.81	2,217,245.796	467,978.300	40 17 22.34447	-111 52 35.79993		
12825	7,271,798.05	1,537,989.49	2,216,448.479	468,780.135	40 16 56.60138	-111 52 01.71202		
12826	7,269,161.49	1,535,335.19	2,215,644.853	467,971.103	40 16 30.43653	-111 52 35.81923		
15278	7,266,517.57	1,537,982.30	2,214,838.986	468,777.943	40 16 04.41678	-111 52 01.52517		
15279	7,261,234.80	1,537,937.97	2,213,228.794	468,764.432	40 15 12.20778	-111 52 01.81726		
15280	7,263,888.42	1,535,308.36	2,214,037.923	467,962.925	40 15 38.33411	-111 52 35.87898		
15282	7,261,267.70	1,532,654.58	2,213,238.820	467,154.051	40 15 12.31299	-111 53 09.96588		
15285	7,258,613.74	1,535,280.02	2,212,429.894	467,954.287	40 14 46.19577	-111 52 35.95797		

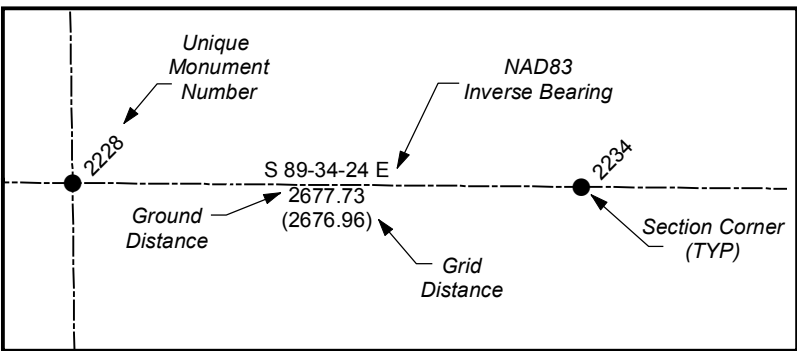
State Plane Coordinate  
&  
Dependent Resurvey

Township 6 South, Range 1 East  
Salt Lake Base & Meridian



LEGEND

- Section Corner
- 1/4 Corner
- 1/16 Corner
- 1/64 or 1/256 Corner
- Closing Corner
- Meander Corner
- Reference Corner
- Witness Corner
- Angle Point
- Traverse Point
- Bench Mark
- HARN
- Triangulation Station
- Camp Williams Military Boundary
- County Boundary Monument
- Fort Crittenden Military Reservation
- Spanish Fork Indian Reservation
- US Forest Service Boundary
- Camp Williams Military Boundary
- Fort Crittenden Military Reservation
- US Forest Service Boundary
- Indian Reservation Boundary
- Township or Range Line
- Section Line
- Quarter Section Line
- Quarter/Quarter Section Line
- Unsurveyed NAD83
- Utah County Boundaries
- Utah Lake Meander Line



ALL BEARINGS AND DISTANCES SHOWN ARE BASED ON THE UTAH COORDINATE SYSTEM, 1983 CENTRAL ZONE.

THE MONUMENT NUMBERS LISTED ARE A UNIQUE G.I.S. NUMBER ASSIGNED TO EACH SURVEYED MONUMENT.

THE NAD83 NORTHINGS & EASTINGS LISTED WERE TRANSFERRED FROM N.G.S. HARN CONTROL STATIONS.

THE LATITUDES & LONGITUDES LISTED WERE CALCULATED FROM THE NAD83 NORTHINGS & EASTINGS THAT WERE TRANSFERRED FROM N.G.S. HARN CONTROL STATIONS.

THE NAD27 NORTHINGS & EASTINGS LISTED WERE TRANSFERRED FROM UNITED STATES COAST AND GEODETIC SURVEY STATIONS; WILLIAMS, ELBERTA, AND LAKE MOUNTAIN No. 2.

SECTION TIES: ORIGINAL GENERAL LAND OFFICE OR BUREAU OF LAND MANAGEMENT SURVEY NOTES, TRAVERSES, CALCULATIONS, TIES TO TRAVERSE POINTS, GPS DATA, ETC. USED IN OBTAINING THIS INFORMATION ARE AVAILABLE IN THE UTAH COUNTY SURVEYOR'S OFFICE.

ALL SECTION CORNERS WERE ESTABLISHED AND VERIFIED PRIOR TO RESURVEY WORK ACCORDING TO THE RULES ESTABLISHED BY THE BUREAU OF LAND MANAGEMENT.

U.S. FOREST SERVICE BOUNDARY AS PER "STATUS AND ENCUMBRANCE MAPS" FURNISHED TO THE UTAH COUNTY SURVEY OFFICE IN THE YEAR 2000.

THE DATA SHOWN ON THIS PLAT WAS COMPILED FROM SURVEY DATA ACQUIRED USING HARN CONTROL POINTS PUBLISHED IN NAD83 STATE PLANE COORDINATES. THE GROUND DISTANCES SHOWN BETWEEN POINTS WERE CALCULATED BY APPLYING "COMBINED CONVERSION FACTORS" (COMMONLY CALLED GRID FACTORS) TO THE INVERSED DISTANCES BETWEEN THE STATE PLANE COORDINATES OF RESPECTIVE MONUMENT POINTS. BECAUSE GRID FACTORS ARE POTENTIALLY UNIQUE AT EACH POINT ON THE SURFACE OF THE EARTH, BASED ON LATITUDE AND ELEVATION, THE RESULTING ADJUSTMENTS FROM GRID TO GROUND WILL VARY FROM POINT TO POINT AROUND ANY GIVEN SECTION. THUS, A "PERFECT CLOSURE" AROUND A SECTION CAN NOT BE OBTAINED USING THE PUBLISHED GROUND DISTANCES.

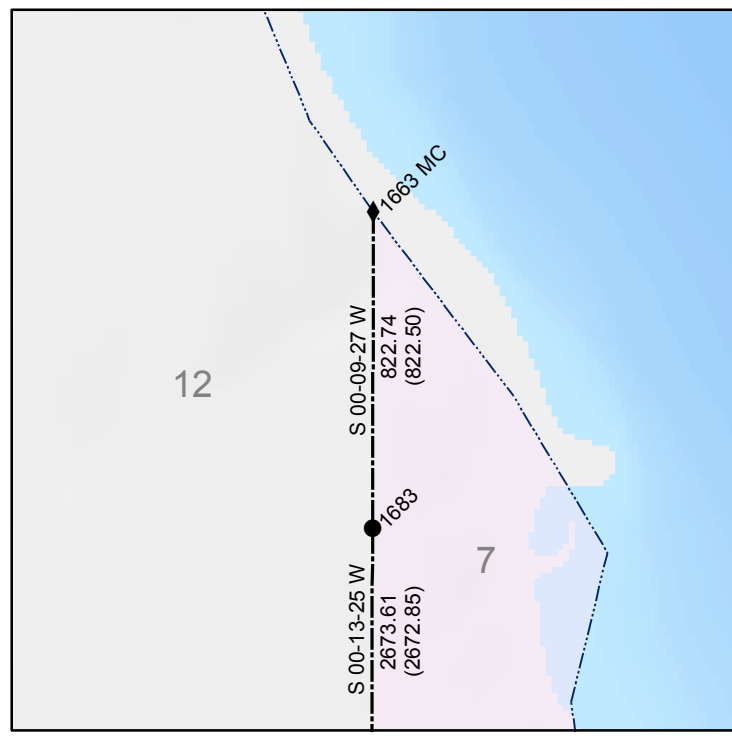
UTAH COUNTY ASSUMES NO LIABILITY FOR DIRECT, INDIRECT, SPECIAL, OR CONSEQUENTIAL DAMAGES RESULTING FROM THE USE OR MISUSE OF THIS PLAT OR ANY INFORMATION CONTAINED HEREON.



Utah County  
Public Works Department  
Survey Division  
2855 South State Street  
Provo, Utah 84606  
(801) 851-8600

Utah Lake

W of Section 7



SW of Section 31

