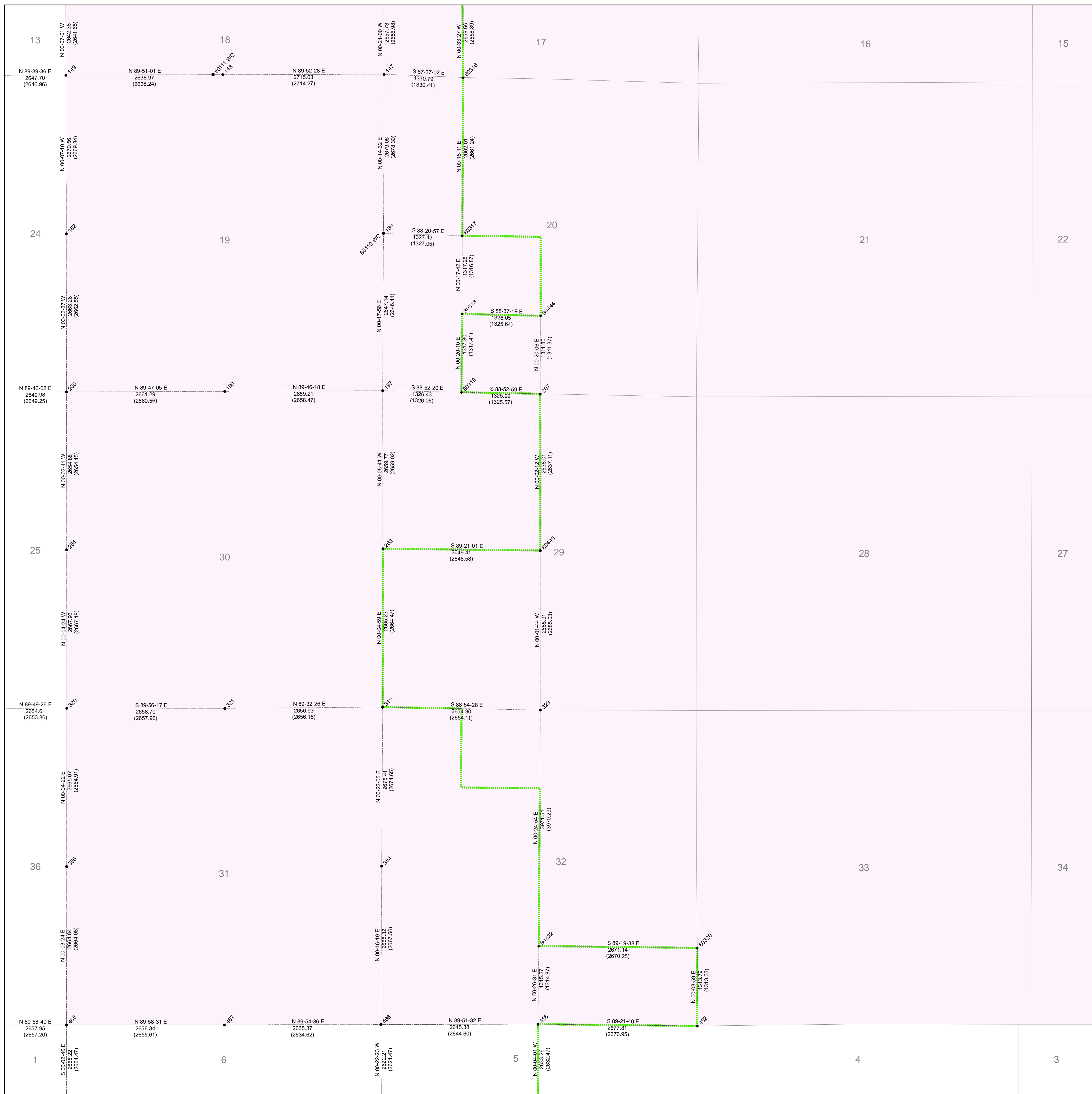


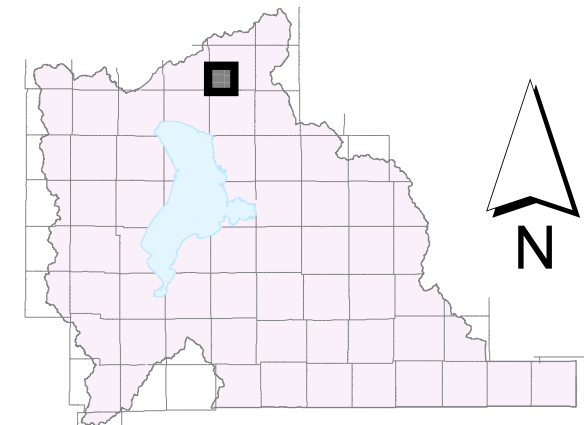
SW of T 4 S, R 2 E

G.I.S. Monument Numbers	NAD 83 Northings US Survey Feet	NAD 83 Eastings US Survey Feet	NAD 83 Northings Meters	NAD 83 Eastings Meters	NAD 83 Latitudes	NAD 83 Longitudes	NAD 27 Northings	NAD 27 Eastings
147	7338179.93	1569636.59	2236681.717	478426.190	40 27 53.68727	-111 45 15.77928	776513.95	1929433.60
148	7338173.98	1569622.33	2236679.901	477998.980	40 27 53.50564	-111 45 50.89703	776508.08	1929719.28
149	7338167.08	1569624.10	2236677.800	478074.747	40 27 53.40416	-111 46 25.00300	776503.79	1929400.72
180	7335501.65	1569625.27	2235965.374	478422.740	40 27 27.22034	-111 45 15.82713	773834.85	1929421.70
182	7335497.25	1564289.67	2235964.033	476796.445	40 27 27.02125	-111 46 24.85318	773831.09	1924086.22
197	7332855.28	1569611.46	2235958.759	478418.529	40 27 01.06867	-111 45 15.90649	771168.29	1929408.06
199	7332844.69	1569603.01	2235955.532	477628.233	40 27 00.89792	-111 45 50.29652	771178.14	1929746.57
200	7332834.70	1564292.47	2235952.487	476797.297	40 27 00.71020	-111 46 24.71167	771168.57	1924088.96
207	7332803.34	1572262.58	2235942.929	479226.594	40 27 00.62857	-111 44 41.61290	771136.47	1932059.09
263	7330196.25	1569615.86	2234349.289	478419.972	40 26 34.76245	-111 45 15.75358	765239.44	1929411.96
284	7330180.55	1564294.54	2234243.498	476797.528	40 26 34.48199	-111 46 24.57992	768514.44	1924091.00
319	7327531.79	1569612.00	2234336.156	478418.694	40 26 08.46202	-111 45 15.70566	765865.10	1929407.76
320	7327513.37	1564297.05	2234330.542	476798.969	40 26 08.12507	-111 46 24.43029	765847.04	1924093.89
321	7327510.49	1569605.91	2234329.963	477628.116	40 26 08.17547	-111 45 50.05417	765844.16	1929752.22
323	7327481.20	1572265.63	2234200.737	479227.524	40 26 08.03530	-111 44 41.38408	76914.43	1932061.67
384	7324857.20	1569594.82	2232620.939	478413.457	40 25 42.03116	-111 45 15.82900	763190.59	1929390.41
385	7324848.46	1564294.56	2232618.276	476797.934	40 25 41.79028	-111 46 24.36883	763182.23	1924090.14
452	7322185.53	1574933.53	2231900.760	480031.557	40 25 15.93344	-111 44 07.08896	763498.98	1934699.19
456	7322196.18	1572267.75	2231909.860	479215.671	40 25 15.80747	-111 44 41.70075	760529.98	1932022.28
466	7322189.67	1569582.16	2231907.876	478409.600	40 25 15.67019	-111 45 15.89501	760522.95	1929377.36
467	7322185.53	1569547.54	2231906.614	477628.564	40 25 15.93384	-111 45 49.96057	760519.50	1929742.67
468	7322184.38	1564291.93	2231906.963	476797.134	40 25 15.46364	-111 46 24.29745	760518.06	1924097.06
80110	7335508.83	1569625.16	2235967.564	478422.707	40 27 27.29134	-111 45 15.82882	773842.09	1929421.74
80111	7338173.55	1566757.37	2236679.770	477548.602	40 27 53.54158	-111 45 53.03124	776507.62	1929554.33
80316	7338124.62	1570965.85	2236684.857	478831.348	40 27 53.17766	-111 44 58.57895	776488.03	1930762.92
80317	7338463.42	1570951.77	2235963.723	478827.056	40 27 26.87954	-111 44 58.66504	773796.89	1930748.41
80318	7334146.57	1570944.99	2235452.345	478824.982	40 27 13.86627	-111 44 58.70510	772479.79	1930741.61
80319	7332829.18	1570937.26	2235950.805	478822.636	40 27 00.84771	-111 44 58.75750	771162.30	1930733.87
80320	7324793.66	1574936.96	2232321.054	480032.601	40 25 28.81955	-111 44 07.08924	761813.25	1934702.88
80322	7323511.01	1572266.89	2232210.620	479218.761	40 25 28.80094	-111 44 41.61623	761844.46	1932032.72
80444	7334114.69	1572270.25	2235442.627	479228.932	40 27 13.58741	-111 44 41.56011	772448.01	1932066.88
80445	7330166.23	1572264.27	2234239.134	479227.108	40 26 34.56888	-111 44 41.48770	768489.38	1932060.57



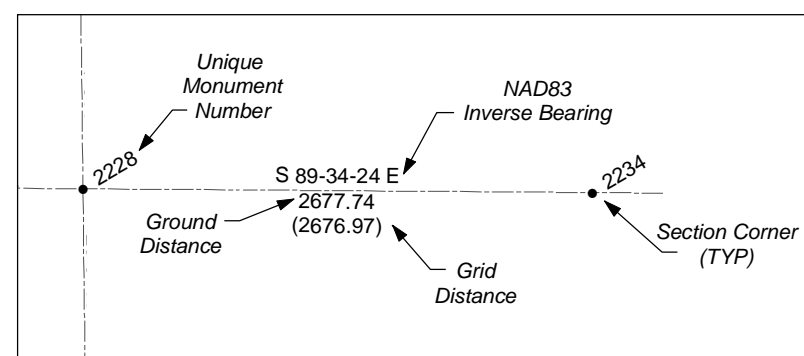
State Plane Coordinate & Dependent Resurvey

SW 1/4 of Township 4 South, Range 2 East Salt Lake Base & Meridian



LEGEND

- Other Corners
- Section Corner
- 1/16 or 1/64 Corner
- Meander Corner
- ▲ Reference Corner
- Witness Corner
- Angle Point
- Traverse Point
- Utah County Boundaries
- Township or Range Line
- Section Line
- Quarter Section Line
- Quarter/Quarter Section Line
- Utah Lake Meander Line
- Unsurveyed NAD83
- Camp Williams Boundary
- Fort Crittenden Boundary
- Indian Reservation Boundary
- US Forest Service Boundary



ALL BEARINGS AND DISTANCES SHOWN ARE BASED ON THE UTAH COORDINATE SYSTEM, 1983 CENTRAL ZONE.

THE MONUMENT NUMBERS LISTED ARE A UNIQUE G.I.S. NUMBER ASSIGNED TO EACH SURVEYED MONUMENT.

THE NAD83 NORTHINGS & EASTINGS LISTED WERE TRANSFERRED FROM N.G.S. HARN CONTROL STATIONS.

THE LATITUDES & LONGITUDES LISTED WERE CALCULATED FROM THE NAD83 NORTHINGS & EASTINGS THAT WERE TRANSFERRED FROM N.G.S. HARN CONTROL STATIONS.

THE NAD27 NORTHINGS & EASTINGS LISTED WERE TRANSFERRED FROM UNITED STATES COAST AND GEODETIC SURVEY STATIONS: WILLIAMS, ELBERTA, AND LAKE MOUNTAIN No. 2.

SECTION TIES: ORIGINAL GENERAL LAND OFFICE OR BUREAU OF LAND MANAGEMENT SURVEY NOTES, TRAVERSES, CALCULATIONS, TIES TO TRAVERSE POINTS, GPS DATA, ETC. USED IN OBTAINING THIS INFORMATION ARE AVAILABLE IN THE UTAH COUNTY SURVEYOR'S OFFICE.

ALL SECTION CORNERS WERE ESTABLISHED AND VERIFIED PRIOR TO RESURVEY WORK ACCORDING TO THE RULES ESTABLISHED BY THE BUREAU OF LAND MANAGEMENT.

U.S. FOREST SERVICE BOUNDARY AS PER "STATUS AND ENCUMBRANCE MAPS" FURNISHED TO THE UTAH COUNTY SURVEY OFFICE IN THE YEAR 2000.

THE DATA SHOWN ON THIS PLAN WAS COMPILED FROM SURVEY DATA ACQUIRED USING HARN CONTROL POINTS PUBLISHED IN NAD83 STATE PLANE COORDINATES. THE GROUND DISTANCES SHOWN BETWEEN POINTS WERE CALCULATED BY APPLYING "COMBINED CONVERSION FACTORS" (COMMONLY CALLED GRID FACTORS) TO THE INVERSED DISTANCES BETWEEN THE STATE PLANE COORDINATES OF RESPECTIVE MONUMENT POINTS. BECAUSE GRID FACTORS ARE POTENTIALLY UNIQUE AT EACH POINT ON THE SURFACE OF THE EARTH, BASED ON LATITUDE AND ELEVATION, THE RESULTING ADJUSTMENTS FROM GRID TO GROUND WILL VARY FROM POINT TO POINT AROUND ANY GIVEN SECTION. THUS, A "PERFECT CLOSURE" AROUND A SECTION CAN NOT BE OBTAINED USING THE PUBLISHED GROUND DISTANCES.

UTAH COUNTY ASSUMES NO LIABILITY FOR DIRECT, INDIRECT, SPECIAL, OR CONSEQUENTIAL DAMAGES RESULTING FROM THE USE OR MISUSE OF THIS PLAN OR ANY INFORMATION CONTAINED HEREON.



Utah County
Public Works Department
2855 South State Street
Provo, Utah 84606
(801) 851-8600