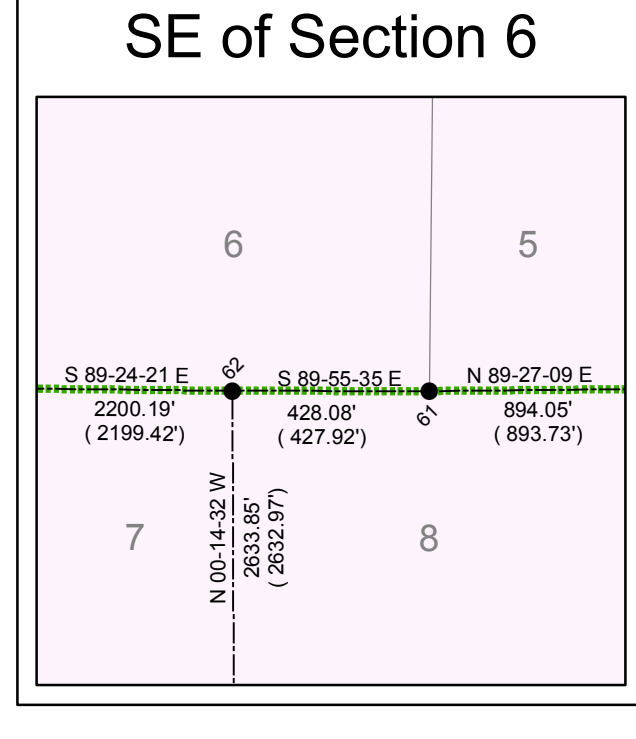
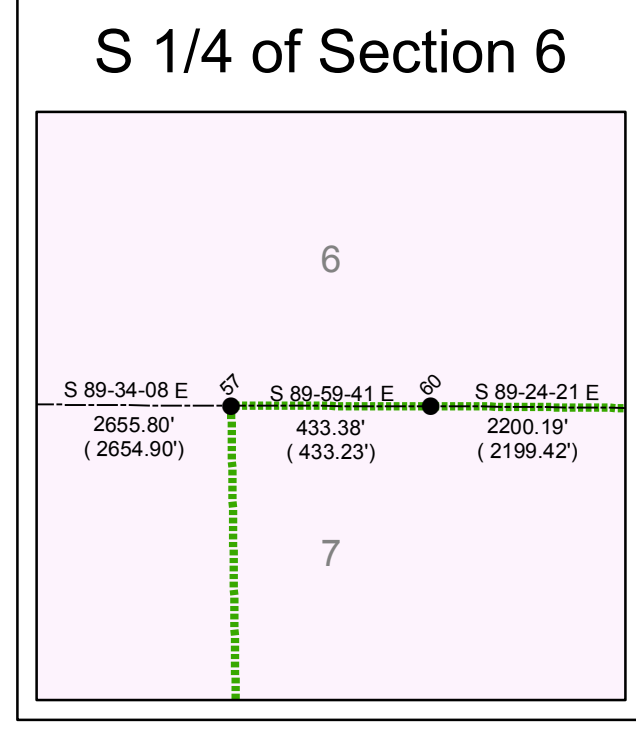
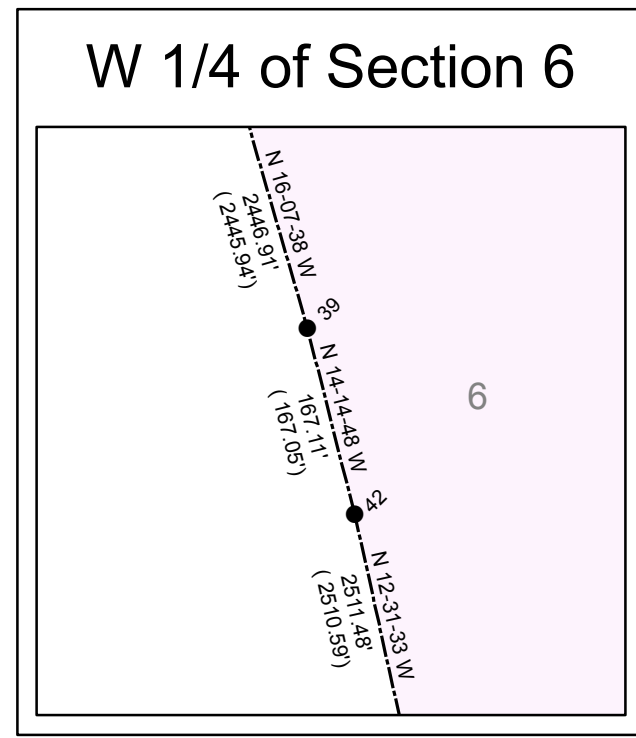


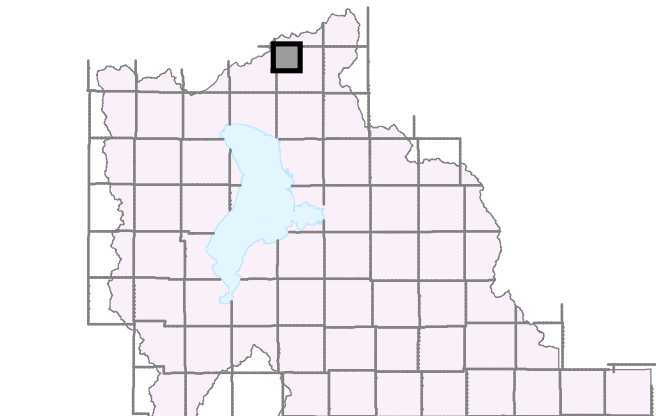
# NW 1/4 of T 4 S, R 2 E

GIS Monument Number	NAD 83 Northings US Survey Feet	NAD 83 Eastings US Survey Feet	NAD 83 Northings Meters	NAD 83 Eastings Meters	NAD 83 Latitudes	NAD 83 Longitudes	NAD 27 Northings	NAD 27 Eastings
16	7353757.41	15630329.4	2241429.741	476413.394	40 30 27.42687	-111 46 41.84631	79209153	19238352
39	7351407.72	15637123.5	2240713.553	476420.479	40 30 04.22857	-111 46 32.95658	78974188	192350993
42	7351245.81	15637534.46	2240664.205	476633.008	40 30 02.62993	-111 46 32.41797	78957998	192355104
57	7348775.01	15669527.7	2239911.103	477608.161	40 29 38.30940	-111 45 50.90812	78710914	192675030
60	7348774.97	15673860.0	2239911.091	477740.207	40 29 38.32162	-111 45 45.30059	78710909	192718351
61	7348751.61	15700132.2	2239903.970	478540.987	40 29 38.16560	-111 45 11.29343	78708566	192981068
62	7348752.16	15699853.0	2239904.138	478410.557	40 29 38.15904	-111 45 16.83232	78708622	192938276
67	7346119.21	1569596.43	2239101.614	478413.940	40 29 12.14105	-111 45 16.59127	78445119	192939384
88	7346038.87	15643102.6	2239077.127	476802.720	40 29 11.19292	-111 46 25.00400	78437304	192410786
103	7343495.87	1572222.49	2238302.018	479214.373	40 28 46.29010	-111 44 42.51042	78182981	193201987
104	7343499.76	1569605.22	2238303.204	478416.628	40 28 46.25630	-111 45 16.38104	78183367	192940258
105	7343485.50	1566956.68	2238298.858	477621.237	40 28 46.04066	-111 45 50.15079	78181943	192679300
106	7343416.86	1564280.29	2238277.937	476793.586	40 28 45.28175	-111 46 25.28802	78175082	192407726
131	7340836.86	15696203.6	2237491.549	478421.244	40 28 19.94225	-111 45 16.08702	77917062	192941747
132	7340808.72	1564278.71	2237482.972	476793.105	40 28 19.50834	-111 46 25.20519	77914245	192407598
147	7338179.93	1569636.59	2236681.717	478426.190	40 27 53.68727	-111 45 15.77928	77651395	192943360
148	7338173.98	1566923.33	2236679.901	477598.880	40 27 53.55964	-111 45 50.89703	77650808	192671928
149	7338167.08	1564284.10	2236677.800	476794.747	40 27 53.40415	-111 46 25.03090	77650079	192408072
1294	7348794.98	1564297.95	2239917.190	476798.970	40 29 38.42787	-111 46 25.27239	78712919	192409532
80111	7338173.55	1566753.7	2236679.770	477548.602	40 27 53.54158	-111 45 53.0124	77650762	192655433
80311	7348760.15	1570906.91	2239906.574	478813.385	40 29 38.27485	-111 44 59.72592	78709419	193070436
80312	7346103.08	1570910.87	2239096.698	478814.950	40 29 12.01830	-111 44 59.57867	78443708	193070829
80313	7346800.93	1570912.27	2238699.801	478815.019	40 28 59.15068	-111 44 59.51341	78313491	193070968
80314	7344790.96	1572224.55	2238696.763	479215.002	40 28 59.08807	-111 44 42.52984	78312492	193202195
80315	7340783.38	1570939.98	2237475.249	478823.464	40 28 19.45055	-111 44 59.00964	77911736	193073718
80316	7338124.42	1570955.85	2236648.857	478813.480	40 27 53.17766	-111 44 58.57995	77645863	193076192
80408	7348791.68	1564297.97	2239916.184	476798.975	40 29 38.39526	-111 46 25.27207	78712589	192409554
80443	7340731.18	1572219.75	2237459.388	479225.729	40 28 18.97077	-111 44 41.93049	77906515	193205701

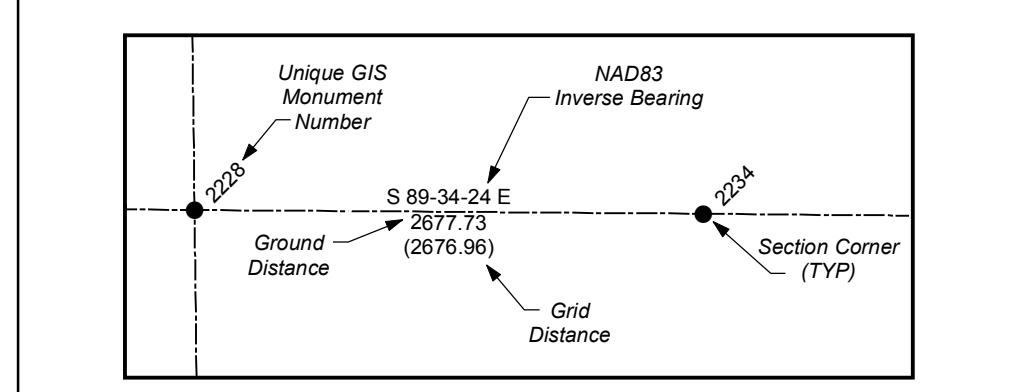


## State Plane Coordinate & Dependent Resurvey

NW 1/4 of Township 4 South, Range 2 East Salt Lake Base & Meridian



- LEGEND**
- <all other values>
  - Section Corner
  - 1/4 Corner
  - 1/16 Corner
  - 1/64 or 1/256 Corner
  - Closing Corner
  - Meander Corner
  - ▲ Reference Corner
  - Witness Corner
  - Amended Monument
  - Angle Point
  - × Bench Mark
  - △ HARN
  - △ Triangulation Station
  - Camp Williams Military Boundary
  - County Boundary Monument
  - Fort Crittenden Military Reservation
  - Spanish Fork Indian Reservation
  - US Forest Service Boundary
  - Camp Williams Military Boundary
  - Fort Crittenden Military Reservation
  - US Forest Service Boundary
  - Indian Reservation Boundary
  - Township or Range Line
  - Section Line
  - Quarter Section Line
  - Quarter/Quarter Section Line
  - Unsurveyed NAD83
  - Utah County Boundaries
  - Utah Lake Meander Line



ALL BEARINGS AND DISTANCES SHOWN ARE BASED ON THE UTAH COORDINATE SYSTEM, 1983 CENTRAL ZONE.

THE MONUMENT NUMBERS LISTED ARE A UNIQUE G.I.S. NUMBER ASSIGNED TO EACH SURVEYED MONUMENT.

THE NAD83 NORTHINGS & EASTINGS LISTED WERE TRANSFERRED FROM N.G.S. HARN CONTROL STATIONS.

THE LATITUDES & LONGITUDES LISTED WERE CALCULATED FROM THE NAD83 NORTHINGS & EASTINGS THAT WERE TRANSFERRED FROM N.G.S. HARN CONTROL STATIONS.

THE NAD27 NORTHINGS & EASTINGS LISTED WERE TRANSFERRED FROM UNITED STATES COAST AND GEODETIC SURVEY STATIONS, WILLIAMS, ELBERTA, AND LAKE MOUNTAIN No. 2.

SECTION TIES, ORIGINAL GENERAL LAND OFFICE OR BUREAU OF LAND MANAGEMENT SURVEY NOTES, TRAVERSES CALCULATIONS, TIES TO TRAVERSE POINTS, GPS DATA, ETC. USED IN OBTAINING THIS INFORMATION ARE AVAILABLE IN THE UTAH COUNTY SURVEYOR'S OFFICE.

ALL SECTION CORNERS WERE ESTABLISHED AND VERIFIED PRIOR TO RESURVEY WORK ACCORDING TO THE RULES ESTABLISHED BY THE BUREAU OF LAND MANAGEMENT.

U.S. FOREST SERVICE BOUNDARY AS PER "STATUS AND ENCUMBRANCE MAPS" FURNISHED TO THE UTAH COUNTY SURVEY OFFICE IN THE YEAR 2000.

THE DATA SHOWN ON THIS PLAT WAS COMPILED FROM SURVEY DATA ACQUIRED USING HARN CONTROL POINTS PUBLISHED IN NAD83 STATE PLANE COORDINATES. THE GROUND DISTANCES SHOWN BETWEEN POINTS WERE CALCULATED BY APPLYING "COMBINED CONVERSION FACTORS" (COMMONLY CALLED GRID FACTORS) TO THE INVERSED DISTANCES BETWEEN THE STATE PLANE COORDINATES OF RESPECTIVE MONUMENT POINTS. BECAUSE GRID FACTORS ARE POTENTIALLY UNIQUE AT EACH POINT ON THE SURFACE OF THE EARTH BASED ON LATITUDE AND ELEVATION, THE RESULTING ADJUSTMENTS FROM GRID TO GROUND WILL VARY FROM POINT TO POINT AROUND ANY GIVEN SECTION. THIS, A "PERFECT CLOSURE" AROUND A SECTION CAN NOT BE OBTAINED USING THE PUBLISHED GROUND DISTANCES.

UTAH COUNTY ASSUMES NO LIABILITY FOR DIRECT, INDIRECT, SPECIAL, OR CONSEQUENTIAL DAMAGES RESULTING FROM THE USE OR MISUSE OF THIS PLAT OR ANY INFORMATION CONTAINED HEREON.

