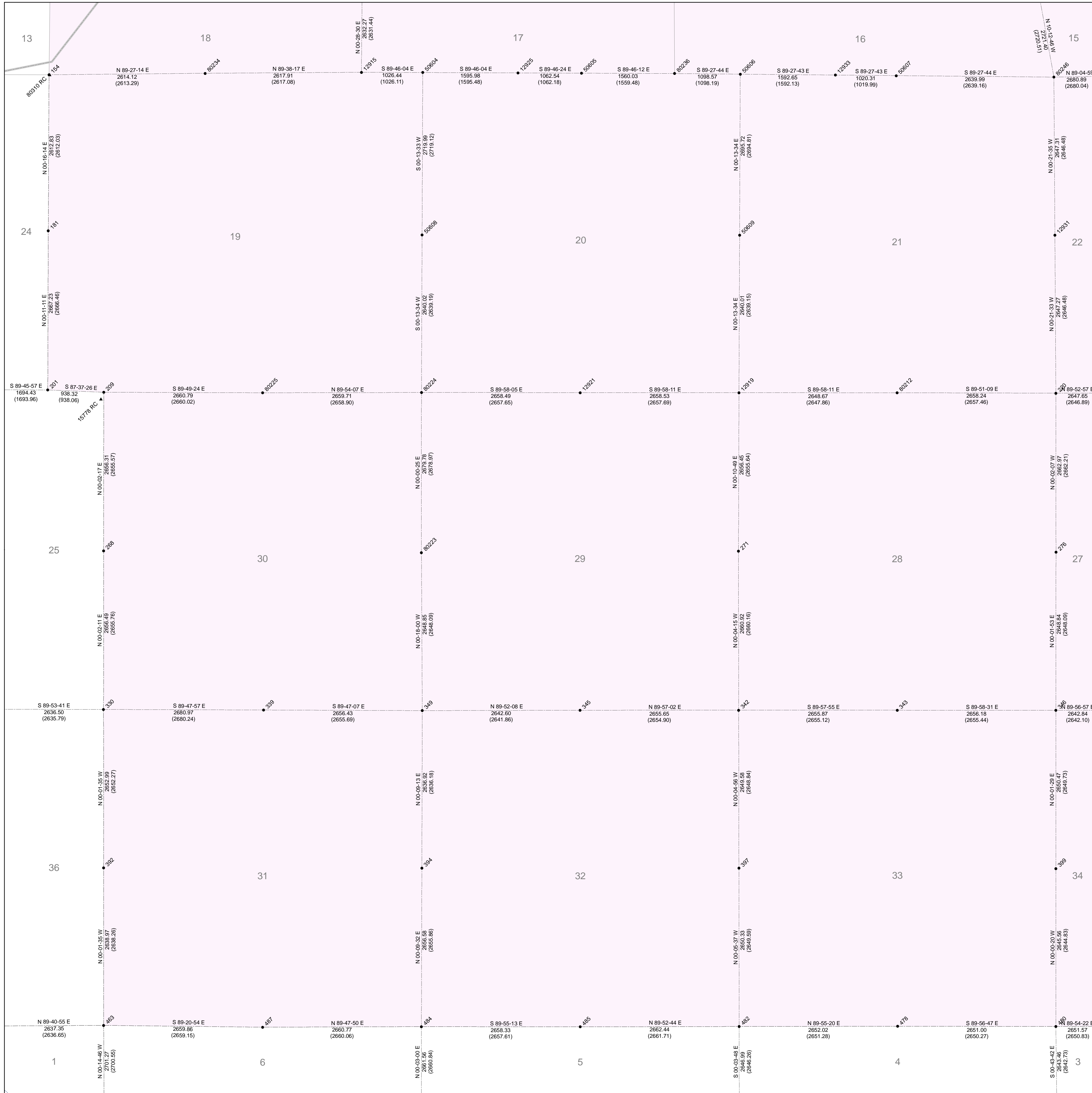


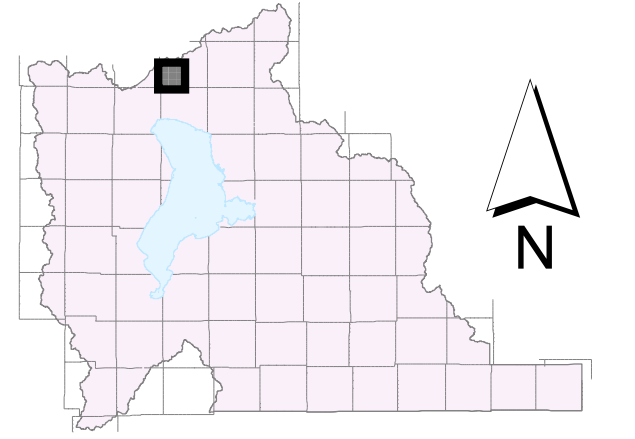
SW of T 4 S, R 1 E

G.I.S. Monument Numbers	NAD 83 Northings US Survey Feet	NAD 83 Eastings US Survey Feet	NAD 83 Northings Meters	NAD 83 Eastings Meters	NAD 83 Latitudes	NAD 83 Longitudes	NAD 27 Northings	NAD 27 Eastings
154	7338107.55	1531506.46	2236659.656	466804.103	40 27 51.81174	-111 53 29.11197	776444.65	1891303.28
181	7335495.55	1531484.13	2235863.515	466800.343	40 27 25.79971	-111 53 29.12366	773832.34	1891290.91
201	7332829.10	1531485.46	2235050.780	466797.703	40 26 59.44977	-111 53 29.08477	771165.77	1891282.29
209	7332790.21	1532422.71	2235038.925	467083.377	40 26 59.10578	-111 53 16.95980	771126.66	1892219.53
220	7332775.43	1543632.27	2235034.420	471941.765	40 26 59.59266	-111 49 50.73599	771109.86	1906158.52
268	7330134.64	1532420.95	2234229.508	467082.841	40 26 32.86365	-111 53 16.83262	768471.06	1892217.39
271	7330128.04	1543048.61	2234227.495	470322.156	40 26 33.23155	-111 50 59.37413	768463.41	1902844.59
276	7330113.22	1548363.91	2234222.978	471942.265	40 26 33.28494	-111 49 50.62501	768447.94	1908159.64
330	7327478.88	1532416.26	2234202.028	467082.325	40 26 06.61937	-111 53 16.70563	765815.44	1892215.26
339	7327469.49	1535099.48	2233417.166	467899.256	40 26 06.64008	-111 52 42.04287	765805.71	1894895.41
342	7327467.88	1543051.90	2233416.677	470323.160	40 26 06.94409	-111 50 59.19699	765803.22	1902847.67
343	7327466.27	1545707.02	2233416.186	471132.443	40 26 07.02938	-111 50 24.85912	765801.36	1905602.72
345	7327465.59	1540397.00	2233415.978	469513.944	40 26 06.81742	-111 51 33.53176	765801.26	1900192.82
346	7327465.13	1548362.46	2233415.837	471941.821	40 26 07.11648	-111 49 50.51722	765799.93	1908157.98
349	7327459.54	1537755.15	2233414.135	468708.707	40 26 06.65142	-111 52 07.89752	765795.41	1897550.95
392	7324826.61	1532420.48	2232611.616	467082.696	40 25 40.40983	-111 53 16.54101	763163.21	1892216.12
394	7324823.37	1537748.08	2232610.628	468706.551	40 25 40.60052	-111 52 07.64842	763159.16	1897543.61
397	7324819.04	1543055.70	2232609.309	470324.317	40 25 40.76842	-111 50 59.01396	763154.35	1902851.25
399	7324815.40	1548361.32	2232608.199	471941.474	40 25 40.93183	-111 49 50.40527	763150.17	1908156.68
463	7322186.35	1532421.70	2231807.472	467083.068	40 25 14.33858	-111 53 16.37730	760524.84	1892217.21
478	7322173.05	1545711.31	2231802.810	471133.749	40 25 14.72190	-111 50 24.54338	760507.90	1905605.58
480	7322170.57	1548361.58	2231802.053	471941.554	40 25 14.79557	-111 49 50.27546	760505.16	1908156.81
482	7322169.45	1543060.03	2231801.713	470325.639	40 25 14.58532	-111 50 58.82392	760504.70	1902855.38
484	7322167.52	1537740.72	2231801.124	468704.310	40 25 14.35511	-111 52 07.60188	760503.28	1897536.08
485	7322163.82	1540399.27	2231799.996	469514.349	40 25 14.42540	-111 51 33.23202	760499.40	1900193.70
487	7322158.10	1535080.68	2231798.251	467893.526	40 25 14.15217	-111 52 41.99541	760494.48	1894876.47
12915	7338148.99	1536736.66	2236672.287	468398.270	40 27 52.24200	-111 52 21.44519	776485.40	1896632.88
12919	7338136.67	1543056.96	2235036.932	470324.702	40 26 59.47463	-111 50 59.40046	771119.03	1902853.01
12921	7337785.08	1540399.27	2235037.362	469514.638	40 26 59.38445	-111 51 33.77874	771121.03	1900195.11
12925	7338136.36	1539358.23	2236669.047	469197.326	40 27 52.24352	-111 51 47.62630	776474.54	1899154.24
12931	7338144.83	1548345.68	2235841.054	471936.708	40 27 52.74388	-111 49 51.11484	773756.68	1908141.78
12933	7338102.64	1544670.07	2236658.159	470916.380	40 27 52.09807	-111 50 38.79886	776438.02	1904465.88
15778	7332880.56	1532377.69	2235005.505	467069.653	40 26 58.02035	-111 53 17.53518	771017.01	1892174.50
50604	7338144.83	1537762.76	2236671.019	468711.028	40 27 52.24292	-111 52 08.16902	776490.77	1897558.72
50605	7338134.16	1540420.40	2236667.766	469521.077	40 27 52.24438	-111 51 33.73350	776470.02	1900216.26
50606	7338117.59	1543078.01	2236662.715	470331.118	40 27 52.18475	-111 50 59.39802	776453.24	1902873.76
50607	7338093.06	1545690.02	2236655.238	471127.259	40 27 52.04194	-111 50 25.60219	776428.28	1905485.86
50608	7338425.73	1537752.04	2235842.233	468707.758	40 27 25.37258	-111 52 08.16271	773761.66	1897547.94
50609	7338422.80	1543067.38	2235841.342	470327.877	40 27 25.55474	-111 50 59.39952	773756.30	1902863.27
80212	7332783.27	1545704.82	2235038.507	471131.772	40 26 59.56180	-111 50 25.14919	771117.38	1905600.91
80223	7330107.59	1537741.29	2234221.262	468704.482	40 26 32.81876	-111 52 08.01801	768443.52	1897537.09
80224	7332786.56	1537741.62	2235037.815	468704.583	40 26 59.29222	-111 52 08.15664	771122.50	1897537.48
80225	7332782.01	1535082.72	2235036.428	467894.150	40 26 59.13746	-111 52 42.55024	771118.02	1894879.13
80234	7338132.46	1534119.63	2236667.246	467600.599	40 27 51.96946	-111 52 55.30379	776489.22	1893916.08
80236	7338127.90	1541978.87	2236665.857	469996.404	40 27 52.24392	-111 51 13.69650	776463.82	1901775.27
80246	7338068.29	1548329.06	2236647.688	471931.642	40 27 51.89504	-111 49 51.45652	776403.08	1908125.01



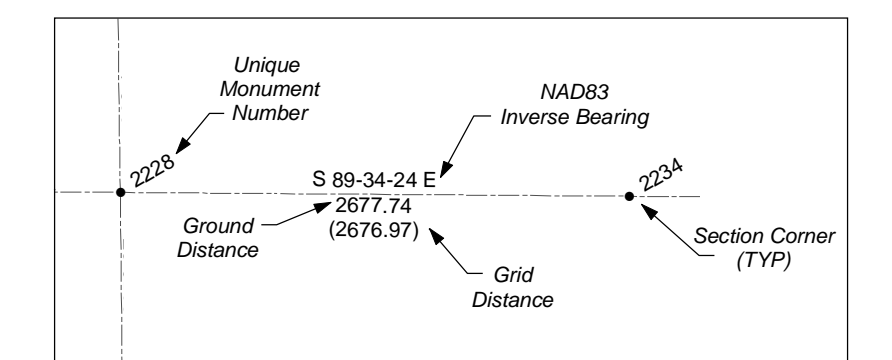
State Plane Coordinate & Dependent Resurvey

SW 1/4 of Township 4 South, Range 1 East Salt Lake Base & Meridian



LEGEND

- Other Corners
- Section Corner
- 1/16 or 1/64 Corner
- Meander Corner
- ▲ Reference Corner
- Witness Corner
- Angle Point
- Traverse Point
- Township or Range Line
- Section Line
- Quarter Section Line
- Quarter/Quarter Section Line
- Utah Lake Meander Line
- Unsurveyed NAD83
- Camp Williams Boundary
- Fort Crittenden Boundary
- Indian Reservation Boundary
- US Forest Service Boundary



ALL BEARINGS AND DISTANCES SHOWN ARE BASED ON THE UTAH COORDINATE SYSTEM, 1983 CENTRAL ZONE.

THE MONUMENT NUMBERS LISTED ARE A UNIQUE G.I.S. NUMBER ASSIGNED TO EACH SURVEYED MONUMENT.

THE NAD83 NORTHINGS & EASTINGS LISTED WERE TRANSFERRED FROM N.G.S. HARN CONTROL STATIONS.

THE LATITUDES & LONGITUDES LISTED WERE CALCULATED FROM THE NAD83 NORTHINGS & EASTINGS THAT WERE TRANSFERRED FROM N.G.S. HARN CONTROL STATIONS.

THE NAD27 NORTHINGS & EASTINGS LISTED WERE TRANSFERRED FROM UNITED STATES COAST AND GEODETIC SURVEY STATIONS: WILLIAMS, ELBERTA, AND LAKE MOUNTAIN No. 2.

SECTION TIES: ORIGINAL GENERAL LAND OFFICE OR BUREAU OF LAND MANAGEMENT SURVEY NOTES, TRAVERSES, CALCULATIONS, TIES TO TRAVERSE POINTS, GPS DATA, ETC. USED IN OBTAINING THIS INFORMATION ARE AVAILABLE IN THE UTAH COUNTY SURVEYOR'S OFFICE.

ALL SECTION CORNERS WERE ESTABLISHED AND VERIFIED PRIOR TO RESURVEY WORK ACCORDING TO THE RULES ESTABLISHED BY THE BUREAU OF LAND MANAGEMENT.

U.S. FOREST SERVICE BOUNDARY AS PER "STATUS AND ENCUMBRANCE MAPS" FURNISHED TO THE UTAH COUNTY SURVEY OFFICE IN THE YEAR 2000.

THE DATA SHOWN ON THIS PLAN WAS COMPILED FROM SURVEY DATA ACQUIRED USING HARN CONTROL POINTS PUBLISHED IN NAD83 STATE PLANE COORDINATES. THE GROUND DISTANCES SHOWN BETWEEN POINTS WERE CALCULATED BY APPLYING "COMBINED CONVERSION FACTORS" (COMMONLY CALLED GRID FACTORS) TO THE INVERSED DISTANCES BETWEEN THE STATE PLANE COORDINATES OF RESPECTIVE MONUMENT POINTS. BECAUSE GRID FACTORS ARE POTENTIALLY UNIQUE AT EACH POINT ON THE SURFACE OF THE EARTH, BASED ON LATITUDE AND ELEVATION, THE RESULTING ADJUSTMENTS FROM GRID TO GROUND WILL VARY FROM POINT TO POINT AROUND ANY GIVEN SECTION. THUS, A "PERFECT CLOSURE" AROUND A SECTION CAN NOT BE OBTAINED USING THE PUBLISHED GROUND DISTANCES.

UTAH COUNTY ASSUMES NO LIABILITY FOR DIRECT, INDIRECT, SPECIAL, OR CONSEQUENTIAL DAMAGES RESULTING FROM THE USE OR MISUSE OF THIS PLAN OR ANY INFORMATION CONTAINED HEREON.



Utah County
Public Works Department
2855 South State Street
Provo, Utah 84606
(801) 851-8600