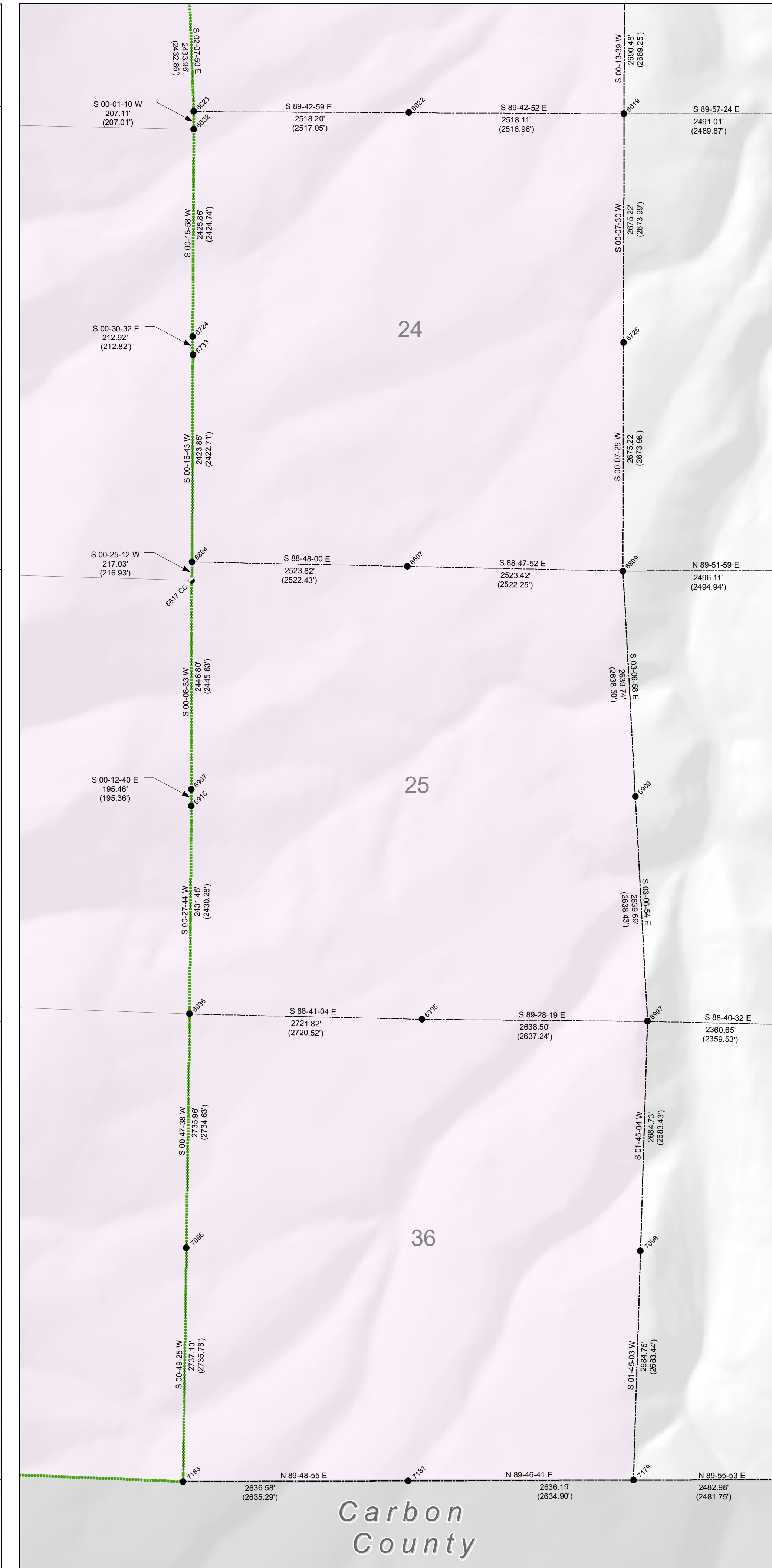
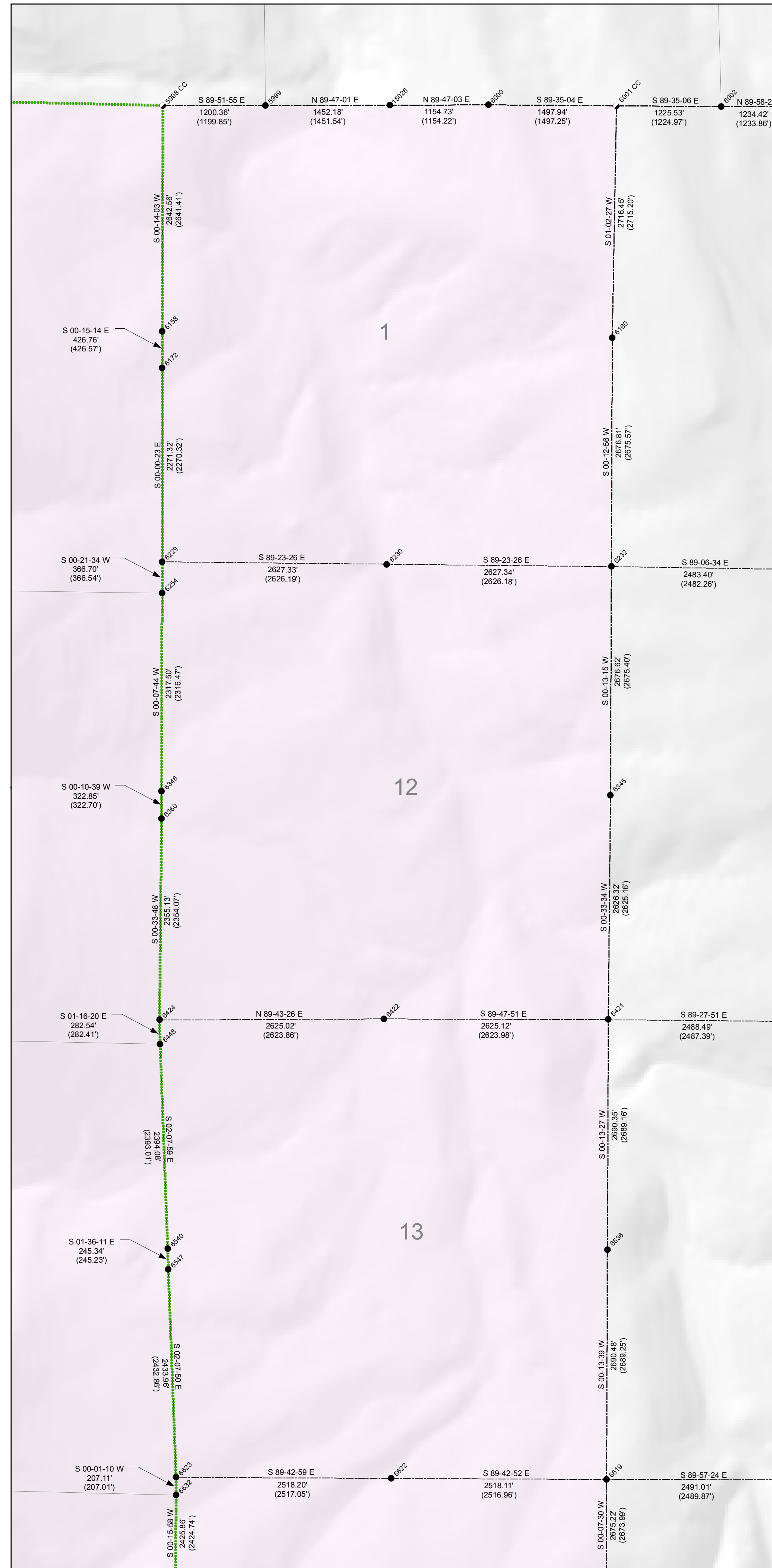


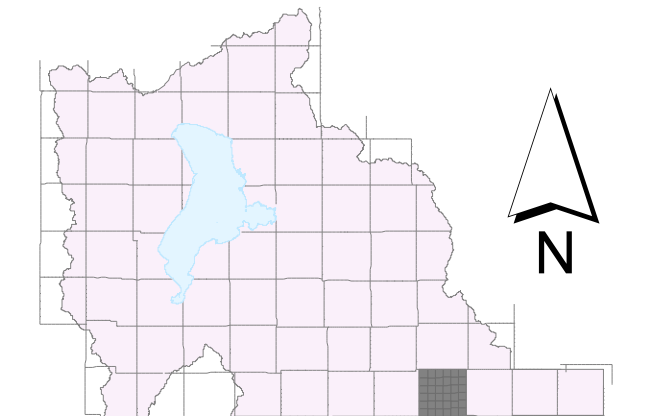
T 11 S, R 6 E

Monument Numbers	NAD 83 Northings US Survey Feet	NAD 83 Eastings US Survey Feet	NAD 83 Northings Meters	NAD 83 Eastings Meters	NAD 83 Latitudes	NAD 83 Longitudes	NAD 27 Northings	NAD 27 Eastings
5998	7132.83895	1721.87185	2174.09344	224.829475	39.54462996	-111.12346372	0	0
5999	7132.83613	1721.87284	2174.09380	225.195389	39.54039426	-111.12192493	0	0
6000	7132.84596	1725.84828	2174.09578	225.989420	39.540397429	-111.114580465	0	0
6001	7132.83510	1727.18149	2174.09248	226.445970	39.540381617	-111.112659238	0	0
6158	7130.19756	1721.86790	2173.28853	224.826385	39.533792421	-111.123488824	0	0
6160	7130.12035	1727.13217	2173.265028	226.430939	39.533696673	-111.112734557	0	0
6172	7129.77079	1721.86979	2173.158545	224.829761	39.533712018	-111.123488176	0	0
6229	7127.50067	1721.87004	2173.46458	224.827208	39.531128944	-111.123497304	0	0
6230	7127.47272	1724.49608	2172.458034	225.627455	39.531090779	-111.120128312	0	0
6232	7127.44480	1727.12211	2172.449521	226.427871	39.531054344	-111.112759333	0	0
6254	7127.13414	1721.86724	2173.354832	224.826337	39.530764703	-111.123501783	0	0
6345	7124.76942	1727.11180	2171.634062	226.424728	39.524410168	-111.112784417	0	0
6346	7124.81768	1721.86253	2171.648772	224.824798	39.524475244	-111.1123518114	0	0
6360	7124.49498	1721.86153	2171.550413	224.824440	39.521542007	-111.123520741	0	0
6421	7122.14439	1727.08617	2170.833951	226.416917	39.521815808	-111.112828918	0	0
6422	7122.15367	1724.46221	2170.834780	225.617134	39.521833800	-111.120194603	0	0
6424	7122.14102	1721.83838	2170.832925	224.817389	39.521829846	-111.123560224	0	0
6448	7121.85868	1721.84465	2170.744866	224.819299	39.521550770	-111.123553361	0	0
6536	7119.45525	1727.07565	2170.04299	226.413712	39.515158029	-111.112854312	0	0
6540	7119.46733	1721.93372	2170.017981	224.846449	39.515186990	-111.1123449066	0	0
6547	7119.22220	1721.94058	2169.943267	224.848338	39.514446999	-111.123442197	0	0
6619	7116.76402	1727.06497	2169.194620	226.410456	39.512500159	-111.112879914	0	0
6622	7116.77856	1724.54804	2169.198444	225.643295	39.512521019	-111.120107612	0	0
6623	7116.79102	1722.03102	2169.202240	224.876106	39.512541539	-111.123335431	0	0
6632	7116.58401	1722.03095	2169.139144	224.876082	39.512336943	-111.123336395	0	0
6724	7114.15930	1722.01969	2168.400092	224.872451	39.505940510	-111.123360935	0	0
6725	7114.09204	1727.05914	2168.379592	226.408678	39.505857351	-111.112899228	0	0
6733	7113.94649	1722.01158	2168.331226	224.873227	39.505730168	-111.123339399	0	0
6804	7111.52381	1722.00980	2167.596791	224.869438	39.503337353	-111.123384591	0	0
6807	7111.47099	1724.53168	2167.580692	225.638308	39.503275309	-111.120151391	0	0
6809	7111.41807	1727.05337	2167.564562	226.406920	39.503214532	-111.112918453	0	0
6817	7111.30689	1722.00821	2167.530674	224.869153	39.503121347	-111.123387534	0	0
6907	7108.86127	1722.00213	2166.785250	224.867299	39.500704230	-111.123405519	0	0
6909	7108.78187	1727.19480	2166.761536	226.450439	39.500610126	-111.112746230	0	0
6915	7108.66591	1722.00286	2166.723202	224.867517	39.500511334	-111.123405415	0	0
6986	7106.23571	1721.98324	2165.984976	224.861541	39.494109293	-111.123440647	0	0
6995	7106.17325	1724.70304	2165.965939	225.690537	39.494038688	-111.115954482	0	0
6997	7106.14894	1727.34017	2165.958528	226.494338	39.494005774	-111.112574107	0	0
7096	7103.50134	1721.94535	2165.151540	224.849993	39.491406880	-111.123500610	0	0
7098	7103.46676	1727.25817	2165.140998	226.469344	39.491355100	-111.112691108	0	0
7179	7100.78457	1727.17618	2164.323467	226.444552	39.487054119	-111.112808075	0	0
7181	7100.77436	1724.54130	2164.320353	225.641241	39.484703178	-111.120184975	0	0
7183	7100.76586	1721.90602	2164.317264	224.838005	39.484703367	-111.123562393	0	0
15026	7132.84161	1724.53007	2174.09440	225.637817	39.540396973	-111.120061607	0	0



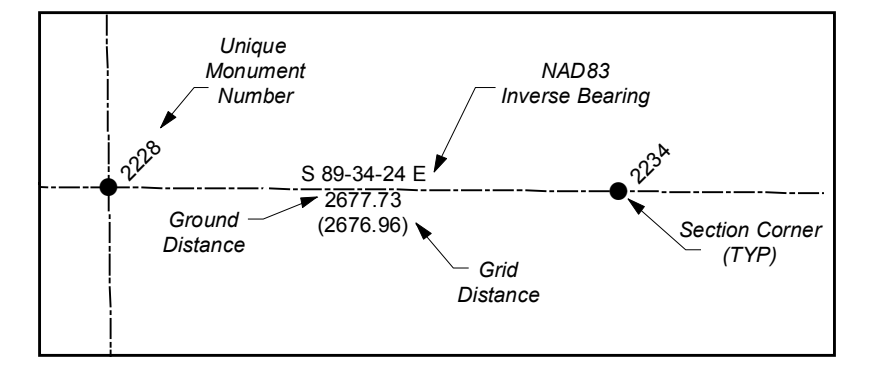
State Plane Coordinate & Dependent Resurvey

Township 11 South, Range 6 East
Salt Lake Base & Meridian



LEGEND

- Section Corner
- 1/4 Corner
- 1/16 Corner
- 1/64 or 1/256 Corner
- ▲ Closing Corner
- ◆ Meander Corner
- ▲ Reference Corner
- Witness Corner
- ⊙ Angle Point
- ⊕ Traverse Point
- × Bench Mark
- △ Triangulation Station
- Camp Williams Military Boundary
- County Boundary Monument
- Fort Crittenden Military Reservation
- Spanish Fork Indian Reservation
- US Forest Service Boundary
- ◆ Camp Williams Military Boundary
- ◆ Fort Crittenden Military Reservation
- ◆ US Forest Service Boundary
- Indian Reservation Boundary
- Township or Range Line
- Section Line
- Quarter Section Line
- Quarter/Quarter Section Line
- Unsurveyed NAD83
- Utah County Boundaries
- Utah Lake Meander Line



ALL BEARINGS AND DISTANCES SHOWN ARE BASED ON THE UTAH COORDINATE SYSTEM, 1983 CENTRAL ZONE.

THE MONUMENT NUMBERS LISTED ARE A UNIQUE G.I.S. NUMBER ASSIGNED TO EACH SURVEYED MONUMENT.

THE NAD83 NORTHINGS & EASTINGS LISTED WERE TRANSFERRED FROM N.G.S. HARN CONTROL STATIONS.

THE LATITUDES & LONGITUDES LISTED WERE CALCULATED FROM THE NAD83 NORTHINGS & EASTINGS THAT WERE TRANSFERRED FROM N.G.S. HARN CONTROL STATIONS.

THE NAD27 NORTHINGS & EASTINGS LISTED WERE TRANSFERRED FROM UNITED STATES COAST AND GEODETIC SURVEY STATIONS; WILLIAMS, ELBERTA, AND LAKE MOUNTAIN No. 2.

SECTION TIES, ORIGINAL GENERAL LAND OFFICE OR BUREAU OF LAND MANAGEMENT SURVEY NOTES, TRAVERSES, CALCULATIONS, TIES TO TRAVERSE POINTS, GPS DATA, ETC. USED IN OBTAINING THIS INFORMATION ARE AVAILABLE IN THE UTAH COUNTY SURVEYOR'S OFFICE.

ALL SECTION CORNERS WERE ESTABLISHED AND VERIFIED PRIOR TO RESURVEY WORK ACCORDING TO THE RULES ESTABLISHED BY THE BUREAU OF LAND MANAGEMENT.

U.S. FOREST SERVICE BOUNDARY AS PER "STATUS AND ENCUMBRANCE MAPS" FURNISHED TO THE UTAH COUNTY SURVEY OFFICE IN THE YEAR 2000.

THE DATA SHOWN ON THIS PLAN WAS COMPILED FROM SURVEY DATA ACQUIRED USING HARN CONTROL POINTS PUBLISHED IN NAD83 STATE PLANE COORDINATES. THE GROUND DISTANCES SHOWN BETWEEN POINTS WERE CALCULATED BY APPLYING "COMBINED CONVERSION FACTORS" (COMMONLY CALLED GRID FACTORS) TO THE INVERSED DISTANCES BETWEEN THE STATE PLANE COORDINATES OF RESPECTIVE MONUMENT POINTS. BECAUSE GRID FACTORS ARE POTENTIALLY UNIQUE AT EACH POINT ON THE SURFACE OF THE EARTH, BASED ON LATITUDE AND ELEVATION, THE RESULTING ADJUSTMENTS FROM GRID TO GROUND WILL VARY FROM POINT TO POINT AROUND ANY GIVEN SECTION. THIS, A "PERFECT CLOSURE" AROUND A SECTION CAN NOT BE OBTAINED USING THE PUBLISHED GROUND DISTANCES.

UTAH COUNTY ASSUMES NO LIABILITY FOR DIRECT, INDIRECT, SPECIAL, OR CONSEQUENTIAL DAMAGES RESULTING FROM THE USE OR MISUSE OF THIS PLAN OR ANY INFORMATION CONTAINED HEREON.



Utah County
Public Works Department
Survey Division
2855 South State Street
Provo, Utah 84606
(801) 851-8600