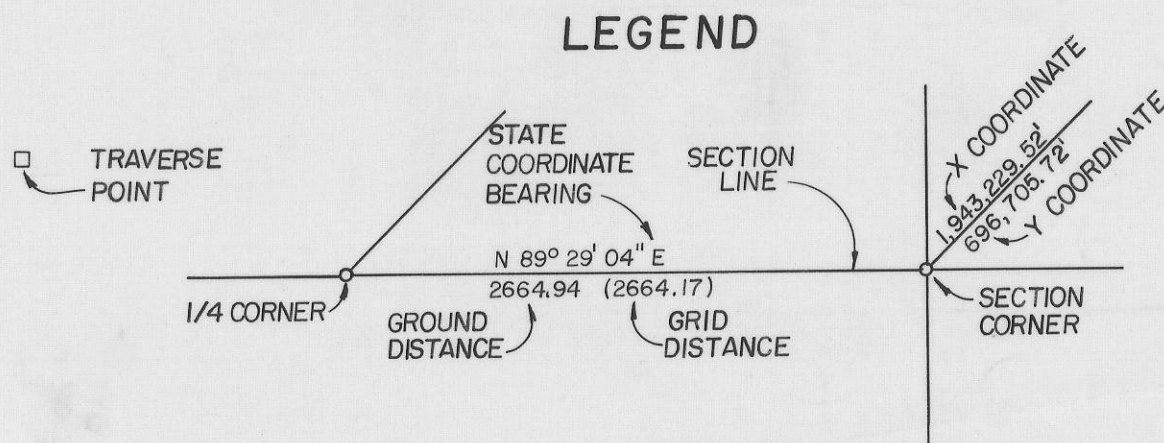


STATE COORDINATE
&
DEPENDENT RESURVEY

of
portions of
Township 10 South, Range 7 East
Salt Lake Base and Meridian

ALL BEARINGS AND COORDINATES SHOWN ARE BASED ON THE
UTAH STATE COORDINATE SYSTEM, LAMBERT CONFORMAL PROJECTION,
UTAH CENTRAL ZONE.
THE COORDINATES SHOWN WERE TRANSFERRED FROM UNITED
STATES COAST AND GEODETIC SURVEY STATIONS TUCKER AND
SOLDIER.



RECORDED:
ENTRY NO.:
BOOK: PAGE:

SECTION TIES, ORIGINAL GENERAL LAND OFFICE OR BUREAU OF LAND MANAGEMENT SURVEY
NOTE, TRAVERSES, CALCULATIONS, TIES TO TRAVERSE POINTS, etc. USED IN OBTAINING THIS
INFORMATION ARE AVAILABLE IN THE UTAH COUNTY SURVEYOR'S OFFICE.

ALL SECTION CORNERS WERE ESTABLISHED AND VERIFIED PRIOR TO RESURVEY WORK
ACCORDING TO THE RULES ESTABLISHED BY THE BUREAU OF LAND MANAGEMENT.

OFFICE OF THE UTAH COUNTY SURVEYOR
Provo, Utah

THE INFORMATION SHOWN ON THIS PLAT IS IN STRICT CONFORMITY TO THE FIELD
NOTES ON FILE IN THE OFFICE OF THE COUNTY SURVEYOR HAVING BEEN EXECUTED IN
ACCORDANCE WITH THE REQUIREMENTS OF THIS OFFICE, AND THIS PLAT IS HEREBY
APPROVED AND ACCEPTED THIS 6th DAY OF NOVEMBER, 1979.

Clyde R. Naylor
UTAH COUNTY SURVEYOR & ENGINEER

STATE OF UTAH
COUNTY OF UTAH
ON THIS 6th DAY OF NOVEMBER, 1979 PERSONALLY APPEARED BEFORE ME, A NOTARY
PUBLIC IN AND FOR THE STATE OF UTAH, CLYDE R. NAYLOR, UTAH COUNTY SURVEYOR,
THE SIGNER OF THIS TOWNSHIP PLAT, WHO ACKNOWLEDGED TO ME THAT HE PREPARED
AND FILED THE SAME.

Harold K. Hinderaker
NOTARY PUBLIC

MY COMMISSION EXPIRES AUGUST 8, 1980
RESIDING AT AMERICAN FORK, UTAH

WASATCH COUNTY
UTAH COUNTY

REVISIONS		
DATE	DRAWN BY	LOCATION

SURVEYOR SEAL NOTARY SEAL T.O.S. R.7.E. P.L.H.