

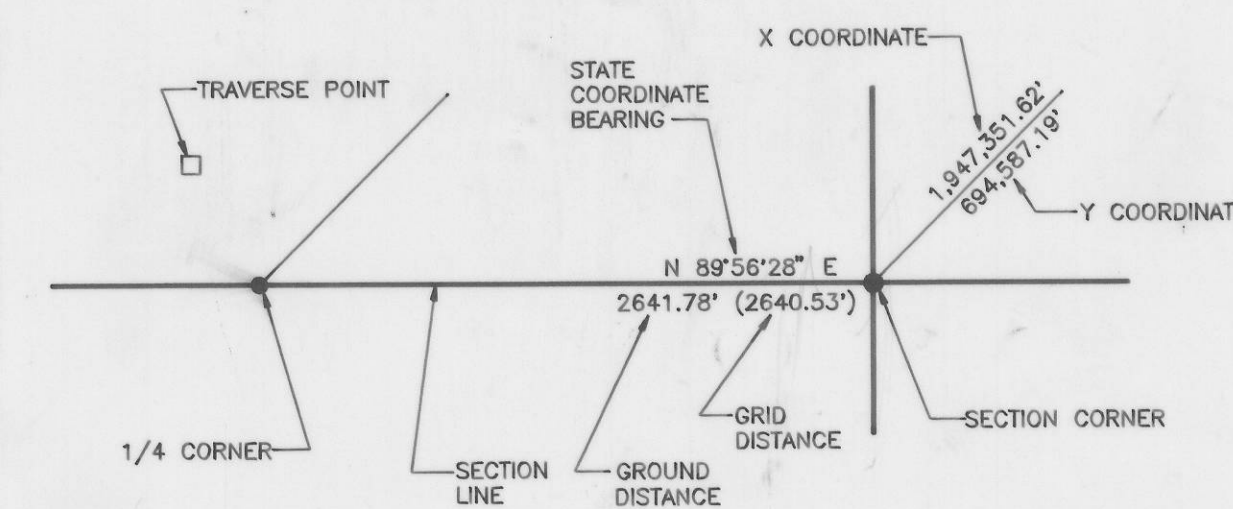
STATE COORDINATE & DEPENDENT RESURVEY

of
portions of
Township 10 SOUTH, Range 4 EAST
Salt Lake Base and Meridian

ALL BEARINGS AND COORDINATES SHOWN ARE BASED ON
THE UTAH COORDINATE SYSTEM, 1927 CENTRAL ZONE.

THE COORDINATES SHOWN WERE TRANSFERRED FROM
NATIONAL AND GEODETIC SURVEY CONTROL STATIONS.

LEGEND



SECTION TIES, ORIGINAL GENERAL LAND OFFICE OR BUREAU OF LAND MANAGEMENT SURVEY
NOTES, TRAVERSES, CALCULATIONS, TIES TO TRAVERSE POINTS, etc. USED IN OBTAINING THIS
INFORMATION ARE AVAILABLE IN THE UTAH COUNTY SURVEYOR'S OFFICE.

ALL SECTION CORNERS WERE ESTABLISHED AND VERIFIED PRIOR TO RESURVEY WORK
ACCORDING TO THE RULES ESTABLISHED BY THE BUREAU OF LAND MANAGEMENT.

OFFICE OF THE UTAH COUNTY SURVEYOR
Provo, Utah

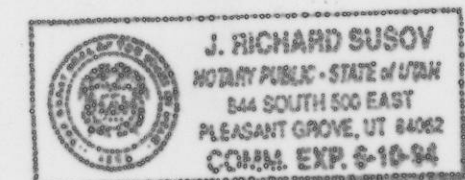
THE INFORMATION SHOWN ON THIS PLAT IS IN STRICT CONFORMITY TO THE FIELD NOTES ON
FILE IN THE OFFICE OF THE COUNTY SURVEYOR HAVING BEEN EXECUTED IN ACCORDANCE WITH THE
REQUIREMENTS OF THIS OFFICE, AND THIS PLAT IS HEREBY APPROVED AND ACCEPTED THIS
30 DAY OF November, 1993

Clyde R. Naylor
UTAH COUNTY SURVEYOR & ENGINEER

STATE OF UTAH
COUNTY OF UTAH
ON THIS 20 DAY OF November, 1993 PERSONALLY APPEARED BEFORE ME, A NOTARY PUBLIC IN AND FOR THE
STATE OF UTAH, CLYDE R. NAYLOR, UTAH COUNTY SURVEYOR, THE SIGNER OF THIS TOWNSHIP PLAT, WHO ACKNOWLEDGED
TO ME THAT HE PREPARED AND FILED THE SAME.

[Signature]
NOTARY PUBLIC

MY COMMISSION EXPIRES:
JUNE 14, 1994
RESIDING AT:
Pleasant Grove, UT



NOTARY SEAL

SURVEYOR SEAL

REVISIONS		
DATE	DRAWN BY	SECTIONS
10/14/93	JDS	SEC 4-5