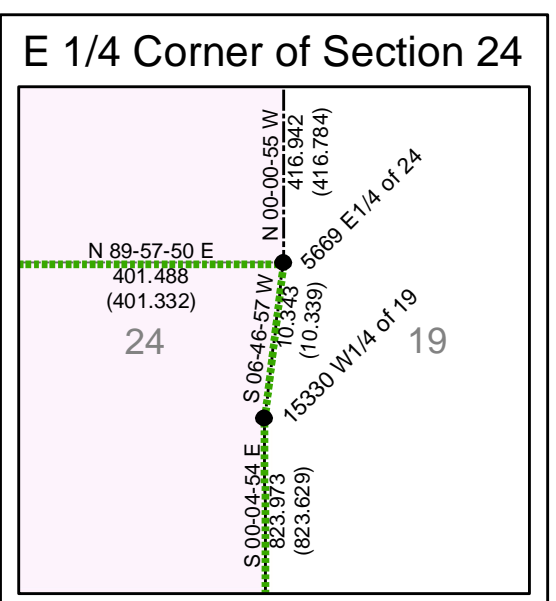
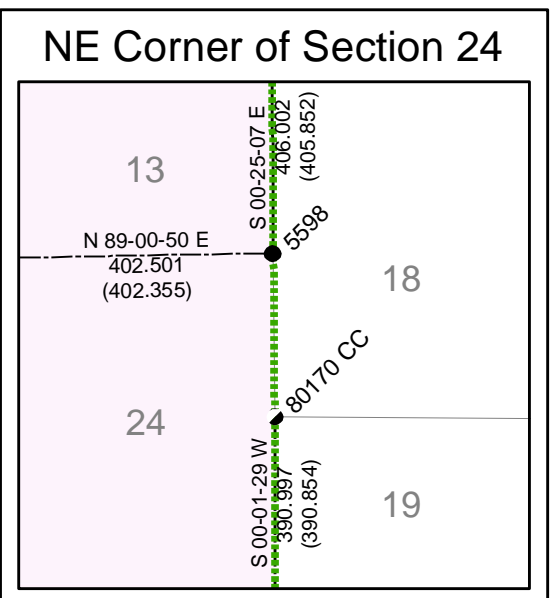
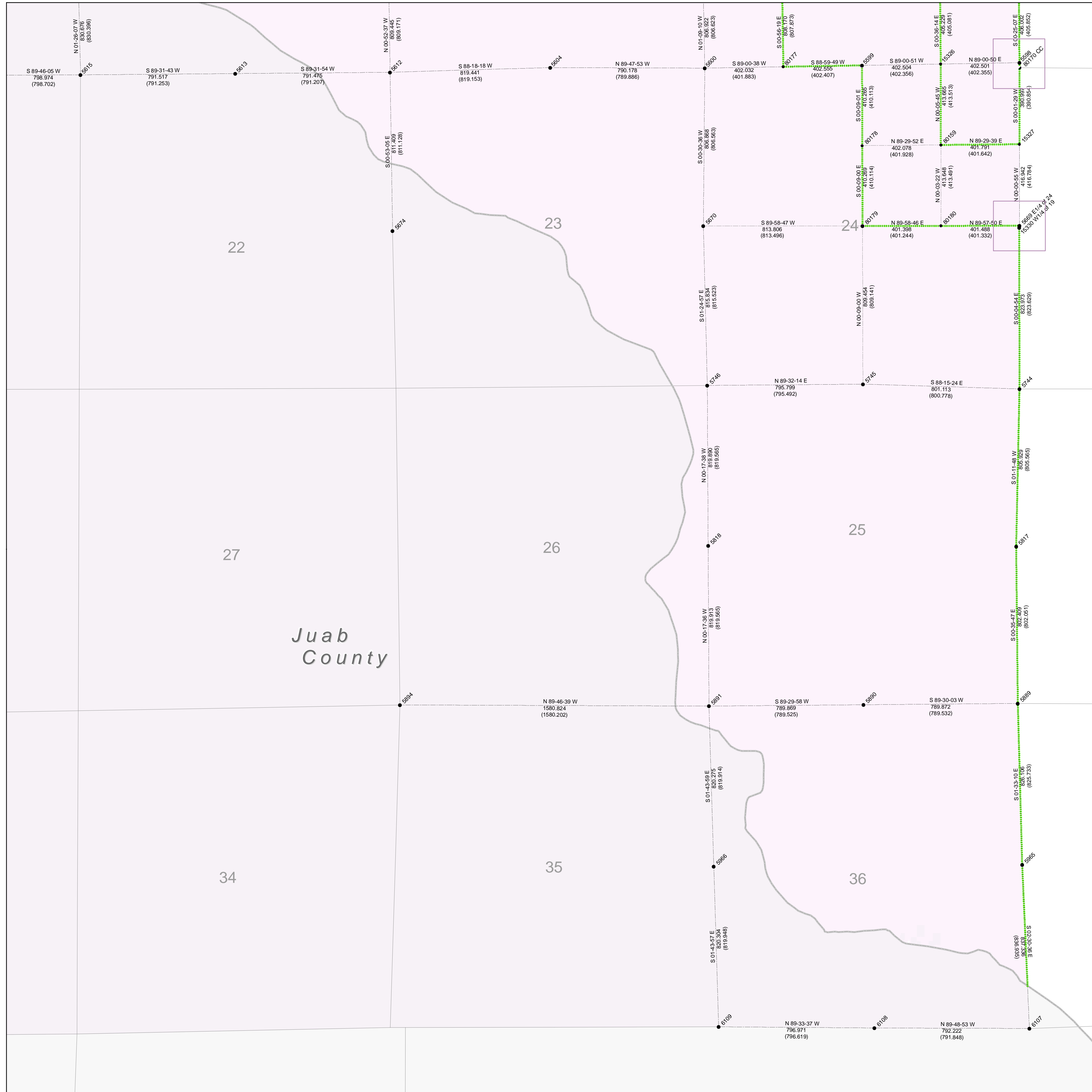


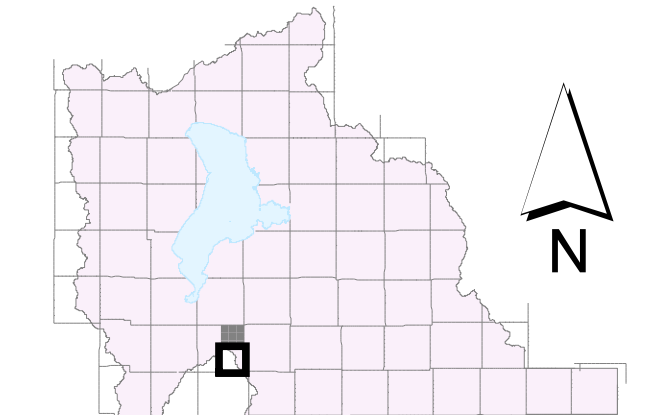
SE of T 10 S, R 1 E

G.I.S. Monument Numbers	NAD83 Northings	NAD83 Eastings	NAD83 Latitudes	NAD83 Longitudes	NAD27 Northings	NAD27 Eastings
5598	2178318.292	477197.868	39 56 21.22200	-111 46 00.52929	585035.89	1925403.58
5599	2178304.445	476393.277	39 56 20.69380	-111 46 34.42030	584990.43	1922763.82
5600	2178290.461	475589.109	39 56 20.15846	-111 47 08.29333	584944.55	1920125.47
5604	2178293.245	474799.228	39 56 20.16561	-111 47 41.56672	584953.25	1917533.58
5612	2178269.016	473980.434	39 56 19.20102	-111 48 16.05416	584973.31	1914946.82
5613	2178262.549	473189.253	39 56 18.99267	-111 48 49.38083	584852.13	1912250.96
5615	2178266.040	472398.027	39 56 18.69029	-111 49 22.70930	584830.95	1909655.10
5669	2177484.616	477198.001	39 55 54.18943	-111 46 00.41894	582900.41	1925403.70
5670	2177483.930	475581.929	39 55 54.00534	-111 47 06.48726	582298.45	1920101.95
5674	2177457.985	473992.957	39 55 52.89413	-111 48 15.41042	582212.62	1914987.60
5744	2176650.721	477197.952	39 55 27.14970	-111 46 00.31625	579564.92	1925403.82
5745	2176675.081	476397.545	39 55 27.86083	-111 46 34.02863	579644.75	1922777.89
5746	2176668.656	476602.079	39 55 27.57152	-111 47 07.52897	579623.65	1920168.07
5817	2175945.332	477181.130	39 55 01.93264	-111 46 00.92349	576922.47	1925348.87
5818	2175849.102	475606.285	39 55 00.99723	-111 47 07.24172	576934.96	1920181.87
5889	2175043.324	477189.477	39 54 35.02761	-111 46 00.47125	574291.29	1925376.09
5890	2175036.447	476399.975	39 54 34.72693	-111 46 33.71332	574268.68	1922785.88
5891	2175029.548	475610.480	39 54 34.42290	-111 47 06.95500	574246.07	1920195.67
5894	2175035.682	474030.290	39 54 34.45308	-111 48 13.49150	574296.11	1915011.38
5965	2174217.894	477211.852	39 54 08.28441	-111 45 59.42557	571583.32	1925449.29
5966	2174210.009	475635.275	39 54 07.85114	-111 47 05.80105	571557.28	1920277.08
6107	2173381.762	477248.506	39 53 41.15553	-111 45 57.77766	568840.02	1925569.78
6108	2173384.323	476456.662	39 53 41.16087	-111 46 31.11232	568848.40	1922971.94
6109	2173380.436	475090.066	39 53 41.27824	-111 47 04.94750	568968.48	1920359.49
15326	2178311.368	476785.573	39 56 20.95822	-111 46 17.47479	585013.16	1924083.70
15327	2177901.400	477197.890	39 56 07.70396	-111 46 00.47598	583668.15	1925403.64
15330	2177474.349	477196.790	39 55 53.85639	-111 46 00.46908	582267.11	1925400.01
80159	2177897.855	476796.264	39 56 07.54982	-111 46 17.39281	583656.54	1924085.50
80170	2178292.254	477196.059	39 56 20.37771	-111 46 00.51797	584950.46	1925404.21
80177	2178297.401	475990.932	39 56 20.42476	-111 46 51.36782	584967.30	1921443.79
80178	2177894.333	476394.352	39 56 07.39572	-111 46 34.32167	583644.93	1922767.36
80179	2177484.220	476395.425	39 55 54.09760	-111 46 34.22314	582299.44	1922770.90
80180	2177484.364	476796.669	39 55 54.14210	-111 46 17.32289	582299.92	1924087.30



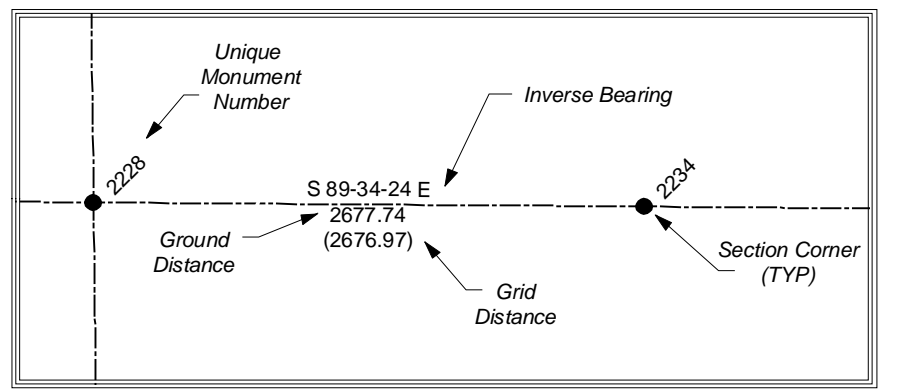
State Plane Coordinate & Dependent Resurvey

SE 1/4 of Township 10 South, Range 1 East Salt Lake Base & Meridian



- ⊕ <all other values>
- Section Corner
- 1/4 Corner
- Center Quarter Section Corner
- 1/16 Corner
- 1/64 or 1/256 Corner
- Closing Corner
- ◆ Meander Corner
- ▲ Reference Corner
- Witness Corner
- ⊙ Angle Point
- ⊙ Traverse Point
- × Bench Mark
- △ HARN
- △ Triangulation Station

1 Foot = 0.3048 meters
3.2808 Feet = 1 meter



ALL BEARINGS AND DISTANCES SHOWN ARE BASED ON THE UTAH COORDINATE SYSTEM, 1983 CENTRAL ZONE.

THE MONUMENT NUMBERS LISTED ARE A UNIQUE G.I.S. NUMBER ASSIGNED TO EACH SURVEYED MONUMENT.

THE NAD83 NORTHINGS & EASTINGS LISTED WERE TRANSFERRED FROM N.G.S. HARN CONTROL STATIONS.

THE LATITUDES & LONGITUDES LISTED WERE CALCULATED FROM THE NAD83 NORTHINGS & EASTINGS THAT WERE TRANSFERRED FROM N.G.S. HARN CONTROL STATIONS.

THE NAD27 NORTHINGS & EASTINGS LISTED WERE TRANSFERRED FROM UNITED STATES COAST AND GEODETIC SURVEY STATIONS, WILLIAMS, ELBERTA, AND LAKE MOUNTAIN No. 2.

SECTION TIES, ORIGINAL GENERAL LAND OFFICE OR BUREAU OF LAND MANAGEMENT SURVEY NOTES, TRAVERSES, CALCULATIONS, TIES TO TRAVERSE POINTS, GPS DATA, ETC. USED IN OBTAINING THIS INFORMATION ARE AVAILABLE IN THE UTAH COUNTY SURVEYOR'S OFFICE.

ALL SECTION CORNERS WERE ESTABLISHED AND VERIFIED PRIOR TO RESURVEY WORK ACCORDING TO THE RULES ESTABLISHED BY THE BUREAU OF LAND MANAGEMENT.

U.S. FOREST SERVICE BOUNDARY AS PER "STATUS AND ENCUMBRANCE MAPS" FURNISHED TO THE UTAH COUNTY SURVEY OFFICE IN THE YEAR 2000.

THE DATA SHOWN ON THIS PLAT WAS COMPILED FROM SURVEY DATA ACQUIRED USING HARN CONTROL POINTS PUBLISHED IN NAD83 STATE PLANE COORDINATES. THE GROUND DISTANCES SHOWN BETWEEN POINTS WERE CALCULATED BY APPLYING "COMBINED CONVERSION FACTORS" (COMMONLY CALLED GRID FACTORS) TO THE INVERSED DISTANCES BETWEEN THE STATE PLANE COORDINATES OF RESPECTIVE MONUMENT POINTS. BECAUSE GRID FACTORS ARE POTENTIALLY UNIQUE AT EACH POINT ON THE SURFACE OF THE EARTH, BASED ON LATITUDE AND ELEVATION, THE RESULTING ADJUSTMENTS FROM GRID TO GROUND WILL VARY FROM POINT TO POINT AROUND ANY GIVEN SECTION. THUS, A "PERFECT CLOSURE" AROUND A SECTION CAN NOT BE OBTAINED USING THE PUBLISHED GROUND DISTANCES.

UTAH COUNTY ASSUMES NO LIABILITY FOR DIRECT, INDIRECT, SPECIAL, OR CONSEQUENTIAL DAMAGES RESULTING FROM THE USE OR MISUSE OF THIS PLAT OR ANY INFORMATION CONTAINED HEREON.



Utah County
Public Works Department
Survey Division
2855 South State Street
Provo, Utah 84606
(801) 851-8600